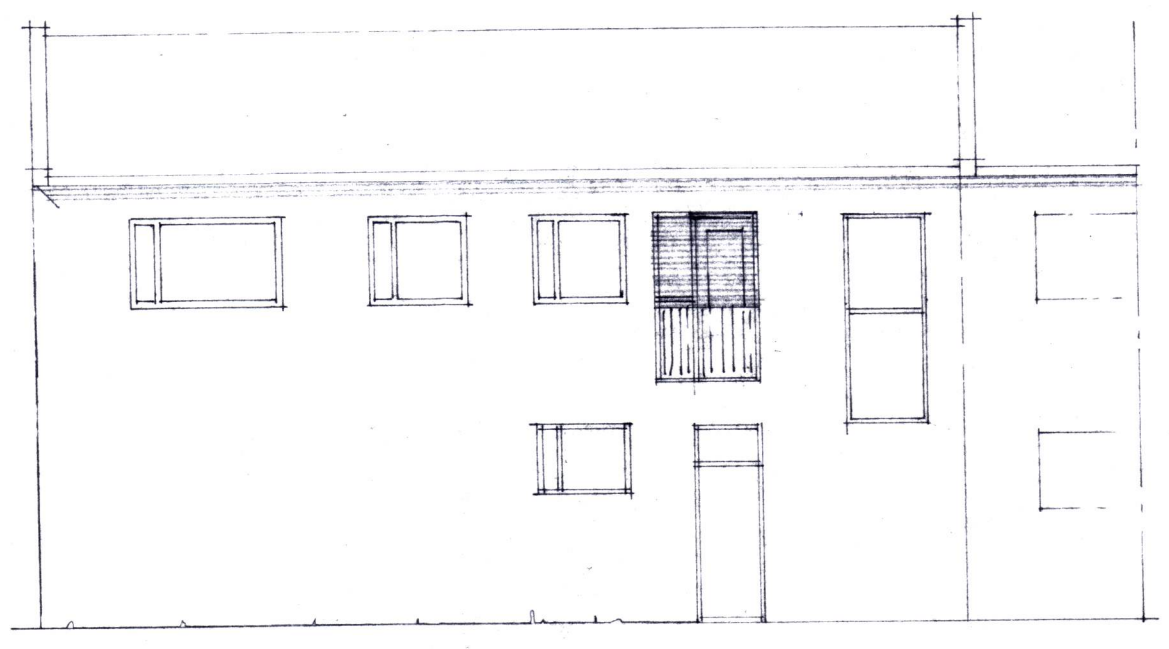
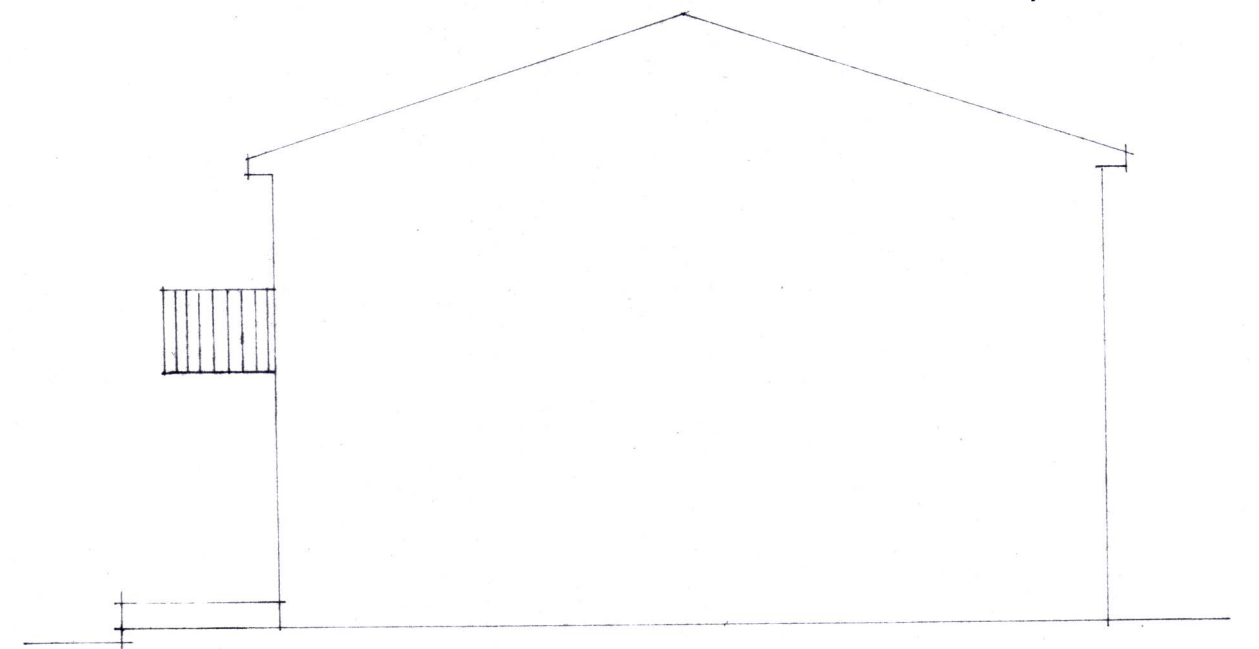


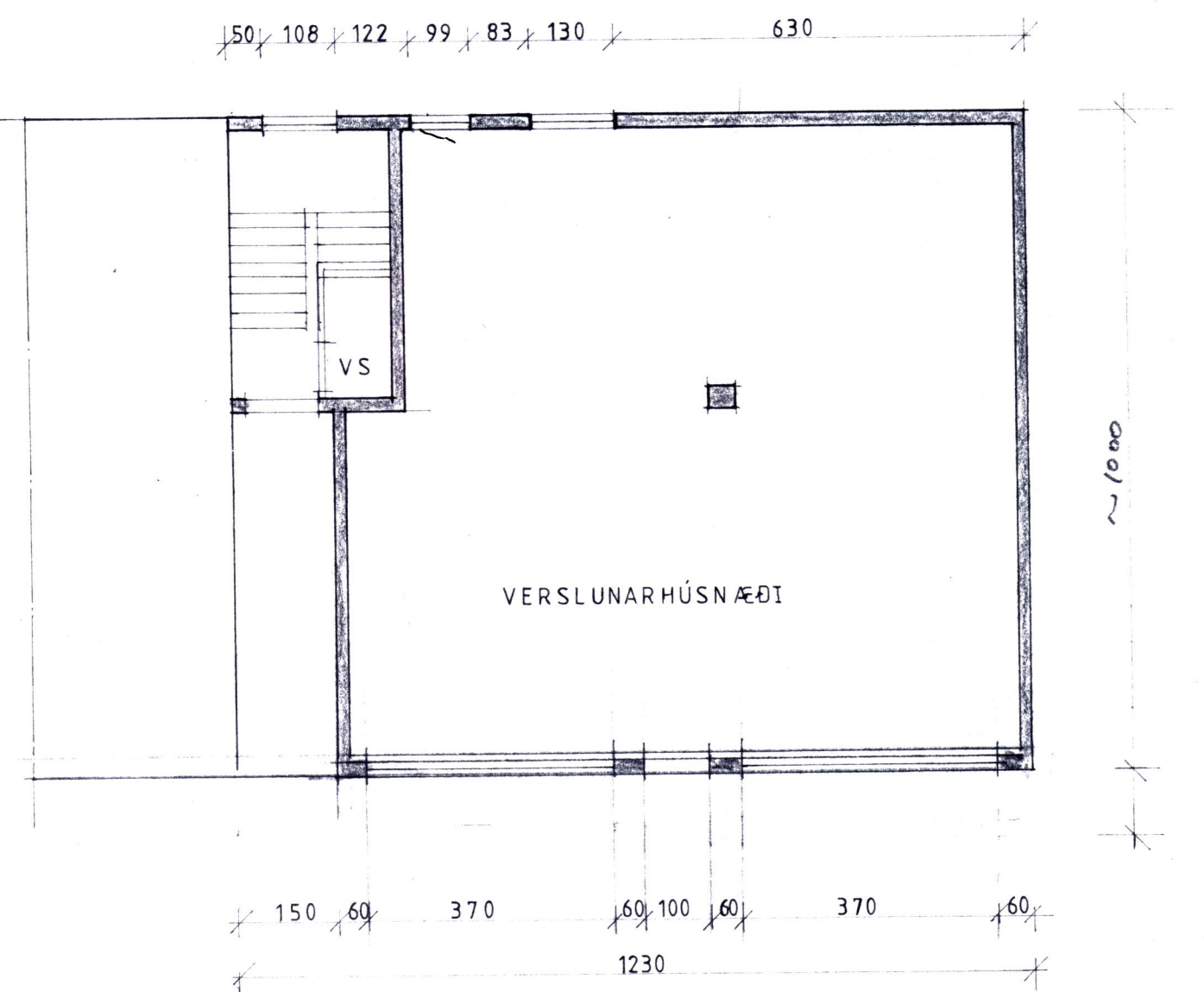
SUÐURHLIÐ



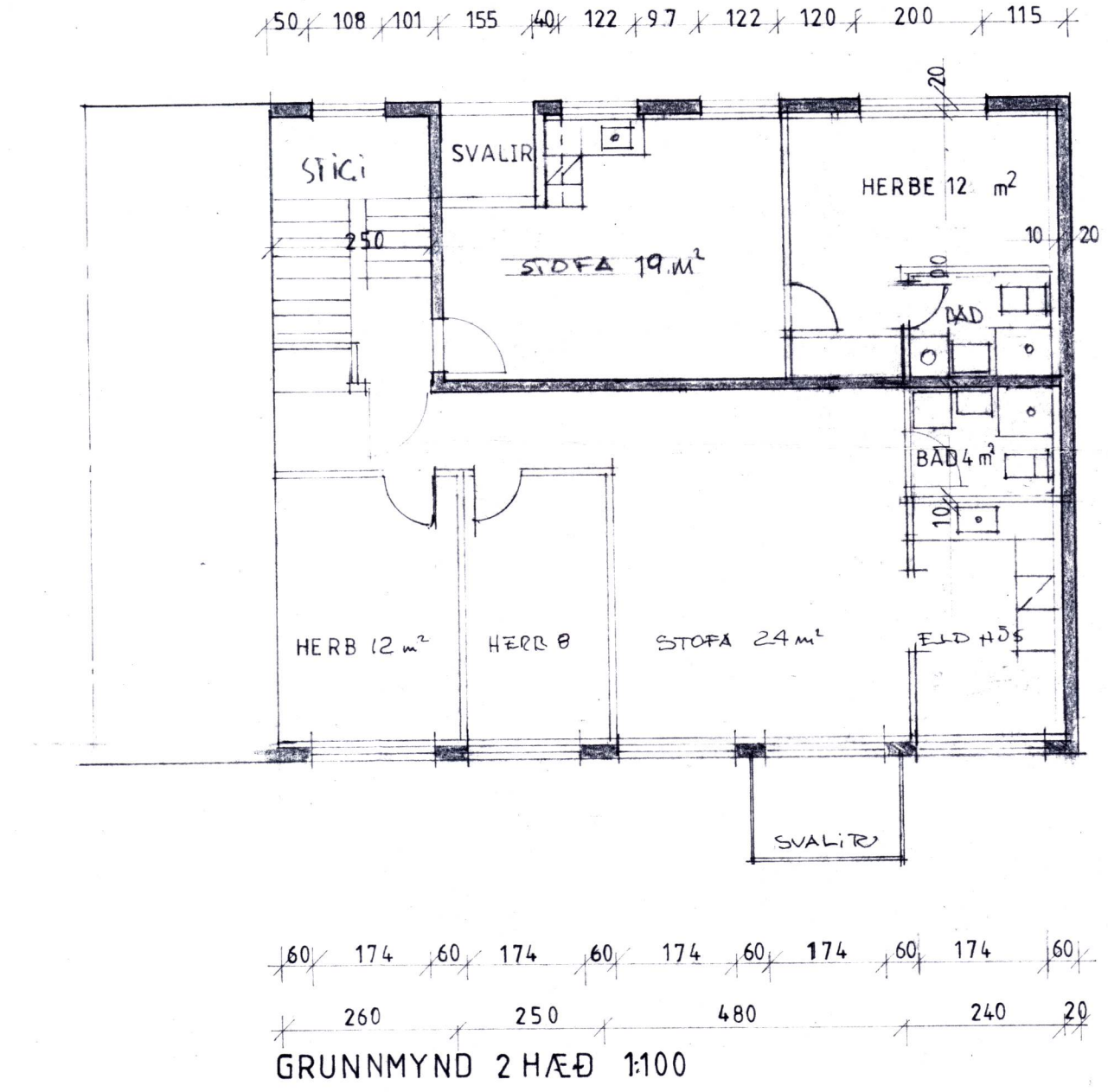
NORÐURHLIÐ



AUSTURGAFL



GRUNNMYND 1 HÆÐ 1:100



GRUNNMYND 2 HÆÐ 1:100

| FLATAMÁL | NETTÓ |
|------------|-------------------|
| 2 HERBERGA | 34 m ² |
| 3 ——— | 63 m ² |

| | | |
|-------------------------|--------|--------------------------------------|
| F | | VERK VESTMANNABRAUT 36 Vestmanneyjum |
| E | | Breytingar efri hæðar |
| D | | Grunnmynd og útlit |
| C | | |
| B | | |
| A | feb 90 | Þessi mynd er tekið tillit til. |
| BR. | DAGS. | BREYTING |
| PÁLL ZÓPHONIÁSSON | | TEIKN. NR. 2 A |
| BYGGINGATÆKNIFRÆÐINGUR | | AF 8453 |
| KIRKJUVEGI 23 - 98-2711 | | HANNAÐ P Z |
| 900 VESTMANNAEYJUM | | TEIKNAD |
| | | KVARDI 1:100 |
| | | DAGS. SEPT 1984 |