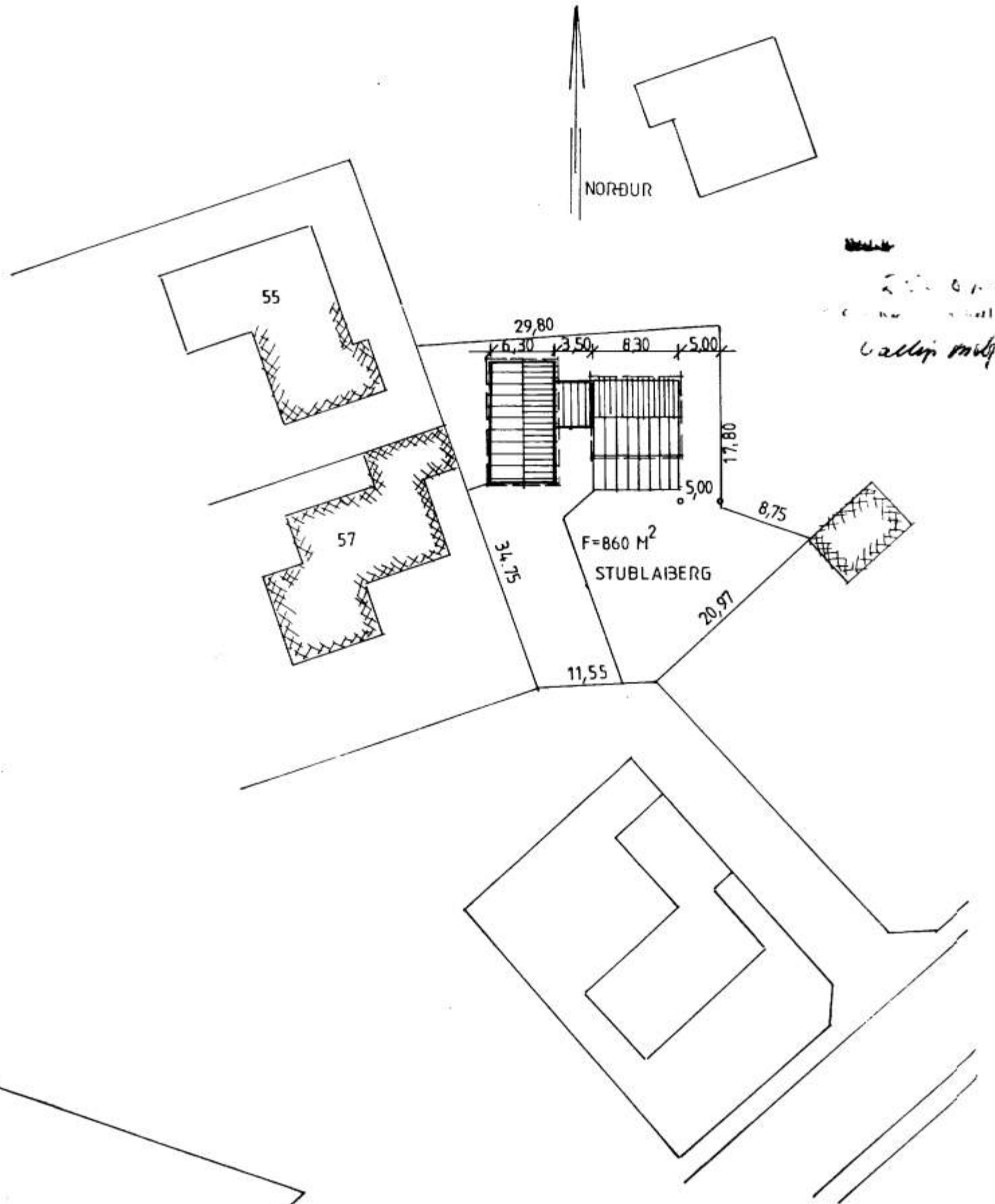
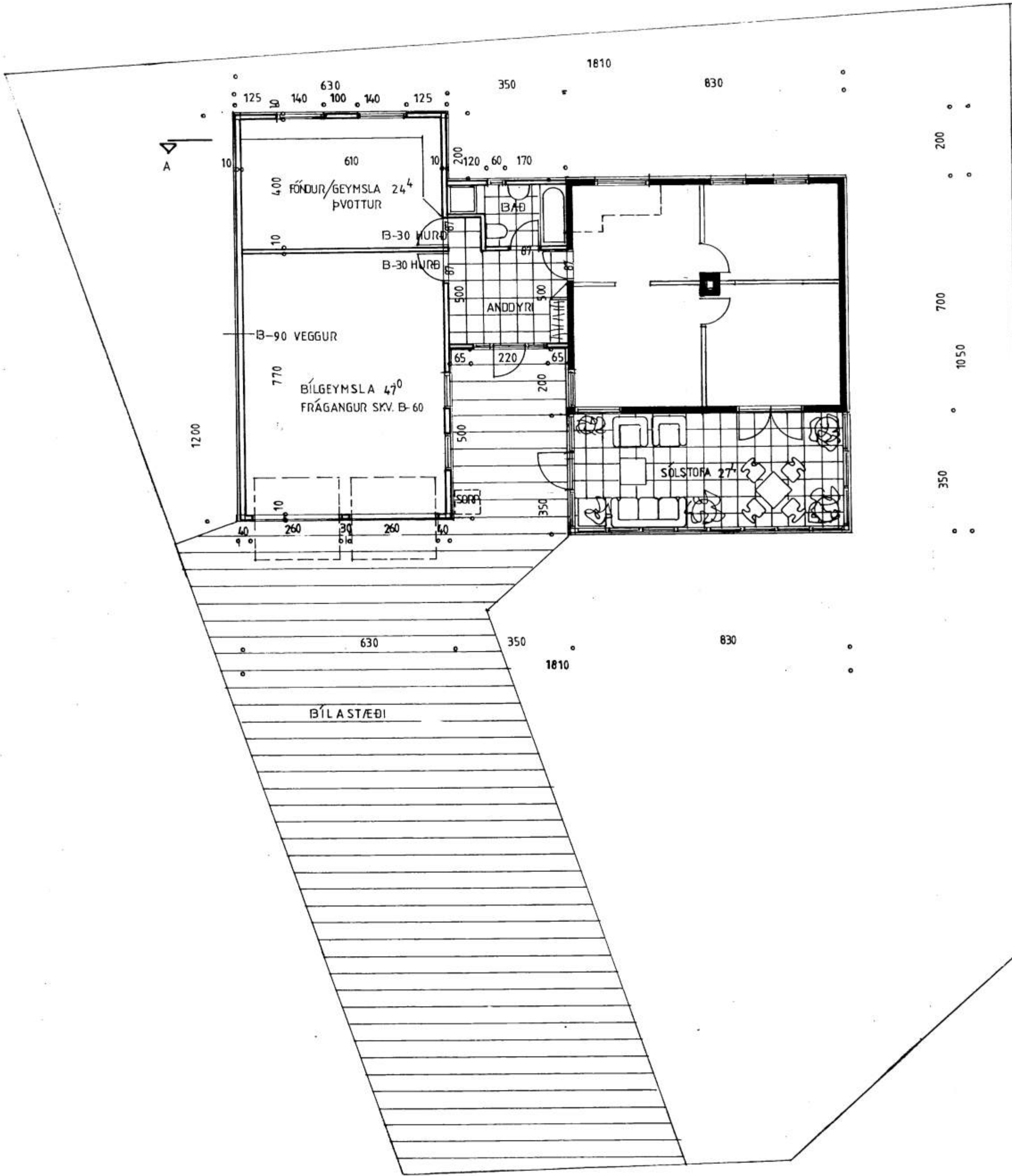
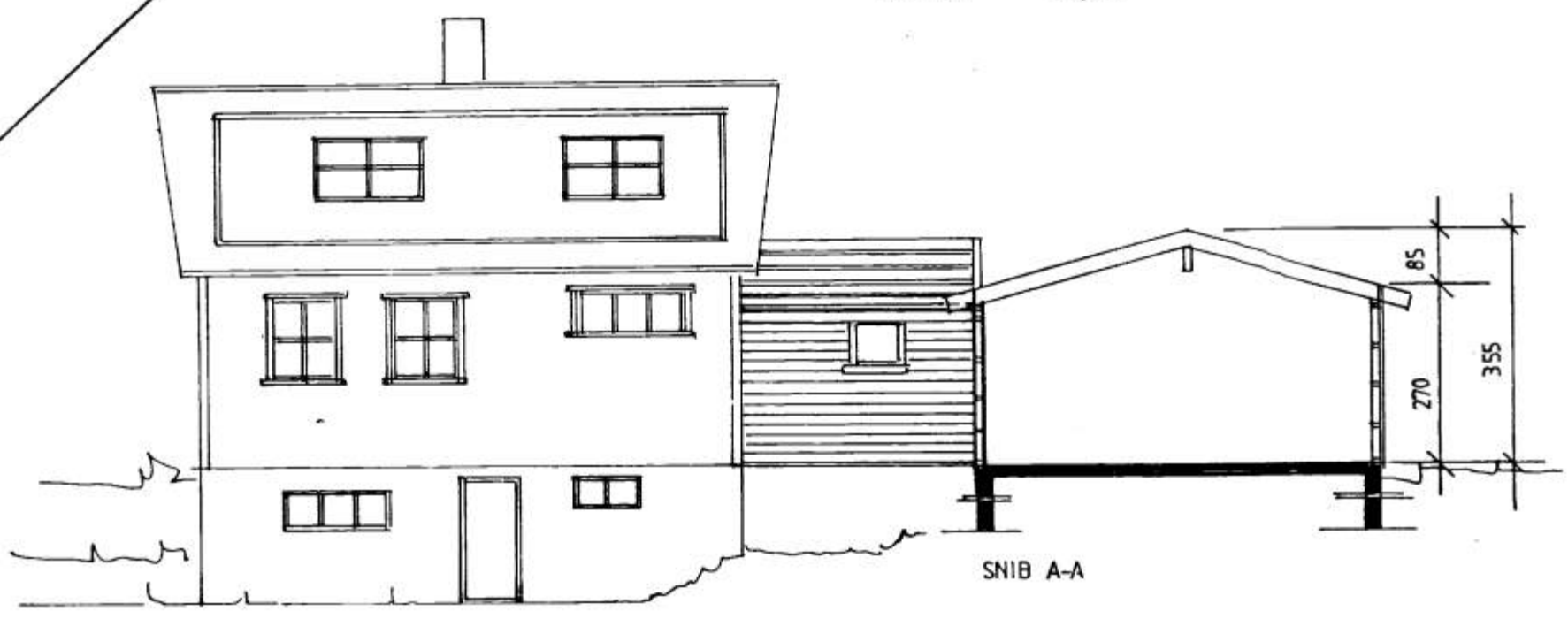


4575



2. 01-91
 VESTMANNNAEYJUM
 Valpinn Magnússon

VIÐBYGGINGAR ÚR TIMBRI :
 ANDDYR O.FL. 17,5 M²
 SÓLSTOFA 29,0 M²
 BÍLAGEYMSLA 50,0 M²
 GEYMSLA 25,8 M²



STUÐLABERG, VIÐ HÓFÐAVEG, VESTMANNNAEYJUM.
 JÚLÍ '91 M. 1:100, 1:500.
 JÓHANNES PÉTURSSON
 SIGURÐUR SIGURÐSSON