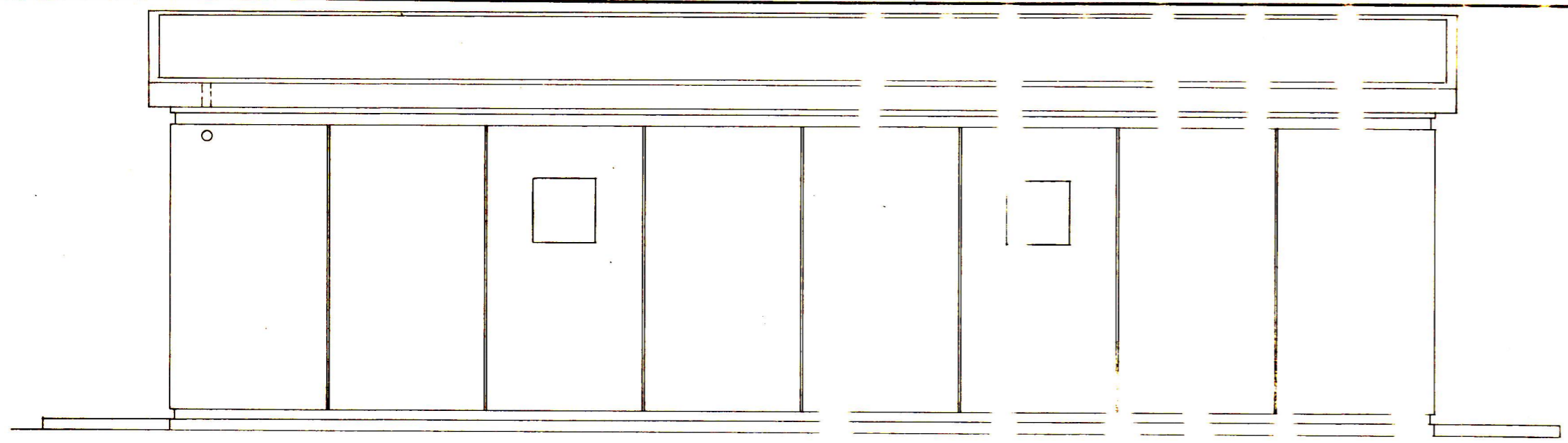
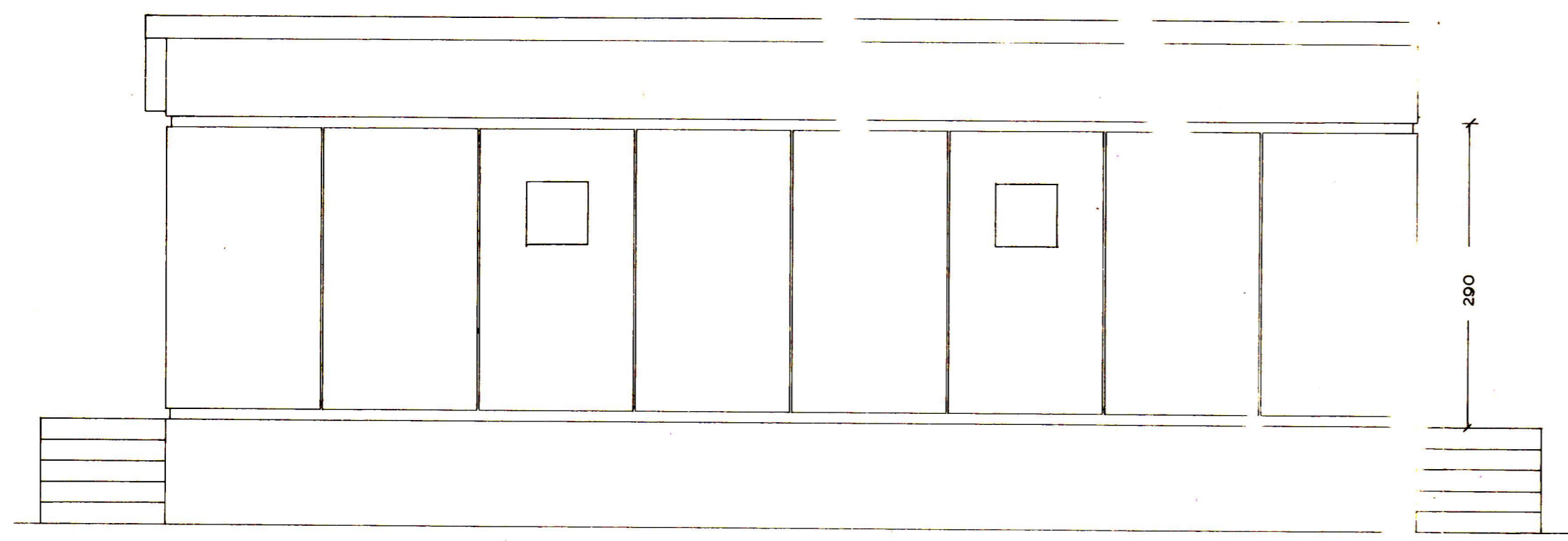


Stuttbylgjustöð í Sæfjalli

Áskilningur  
Míranu, Sögðu, Símlynu  
þessum G. P. P. P. P. P. P. P. P. P.

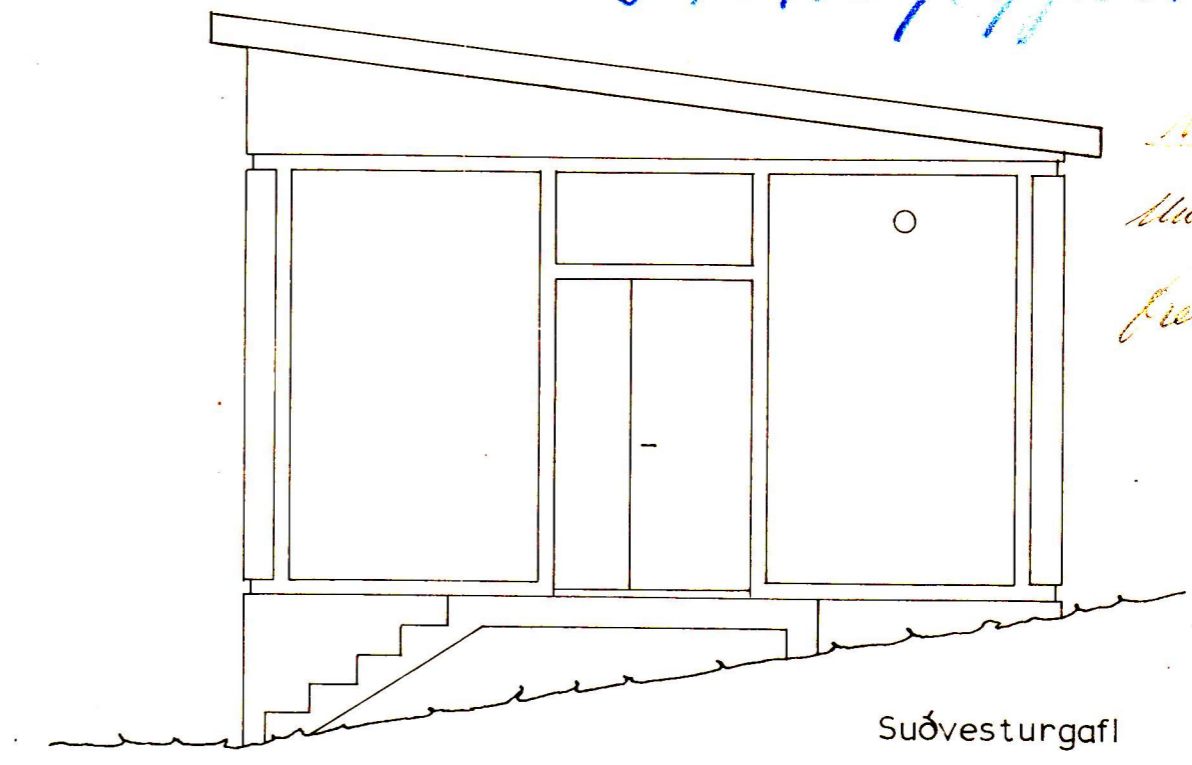


Suðausturhlíð

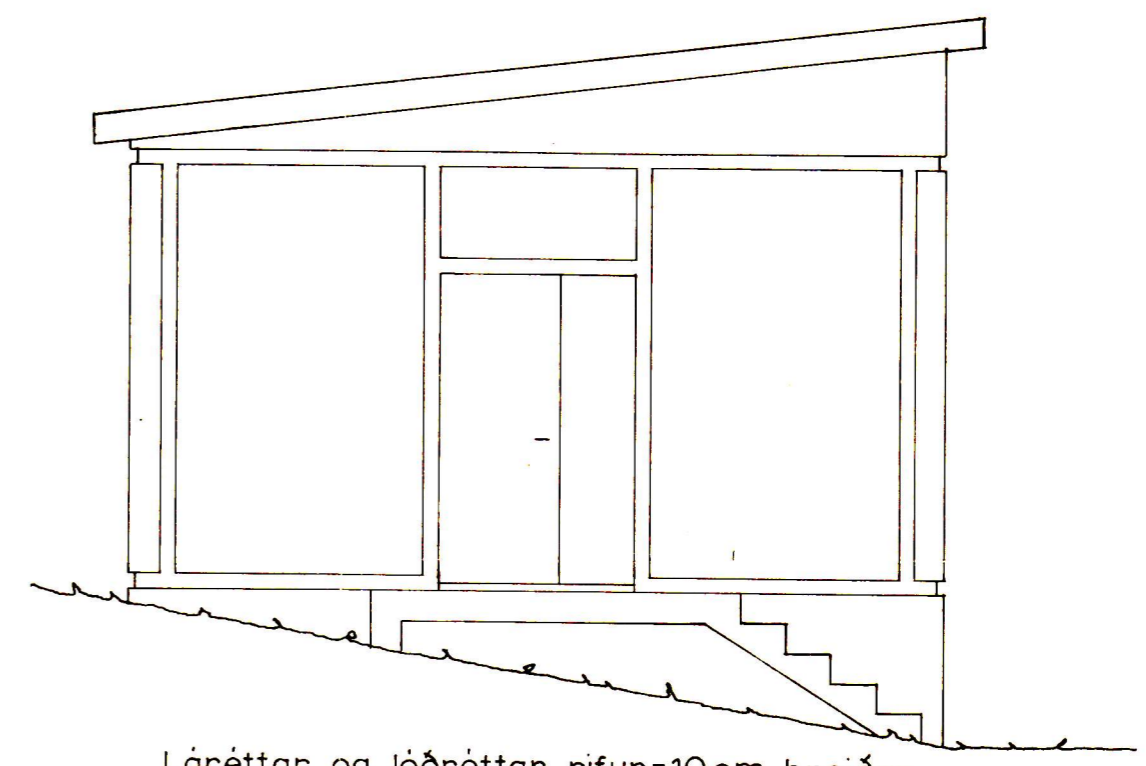


Norðvesturhlíð

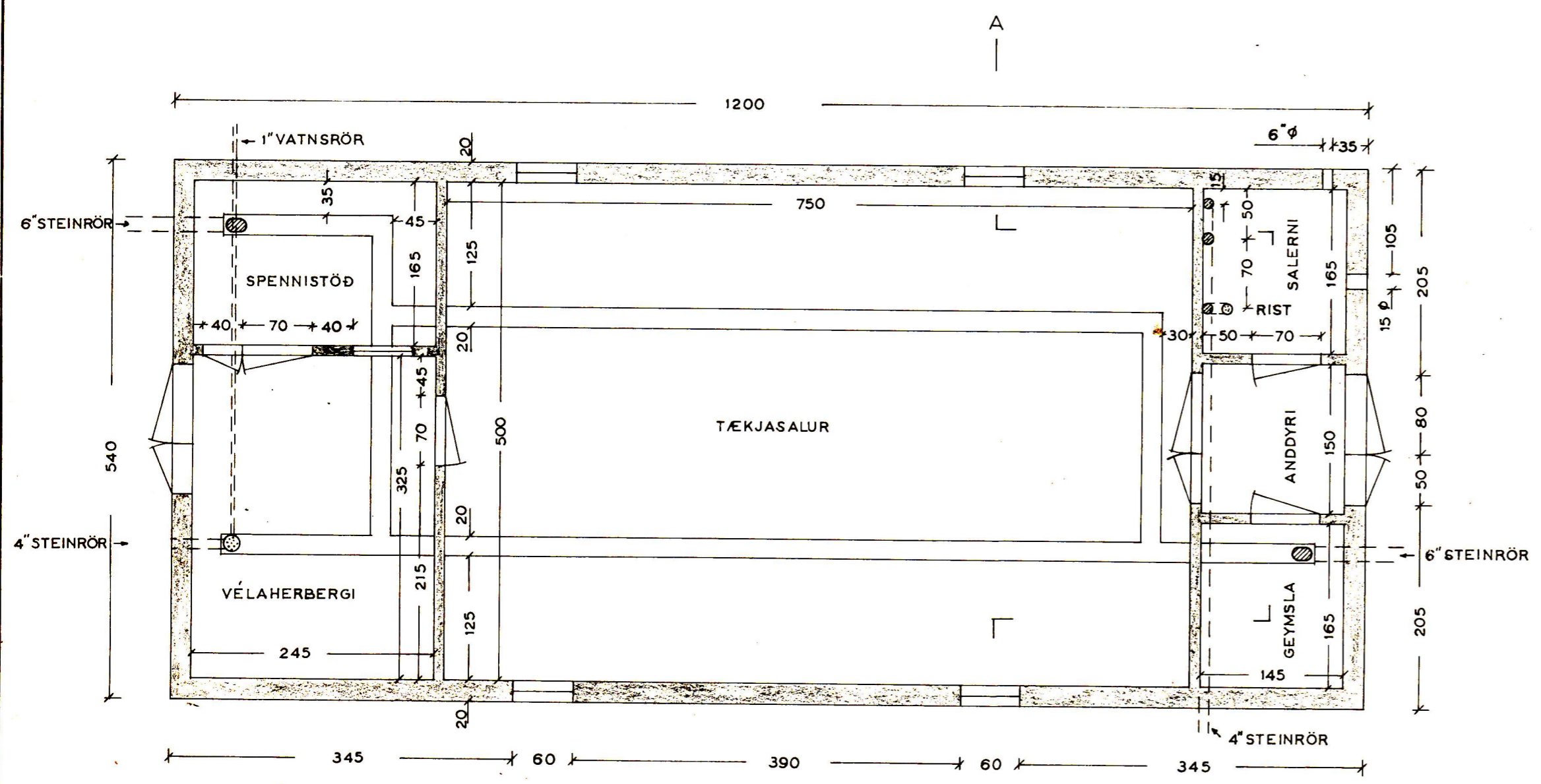
Láréttar rifur = 10 cm. breiðar  
Lóðréttar rifur = 2,5 cm. breiðar  
Allar rifur = 2,5 cm. djúpar



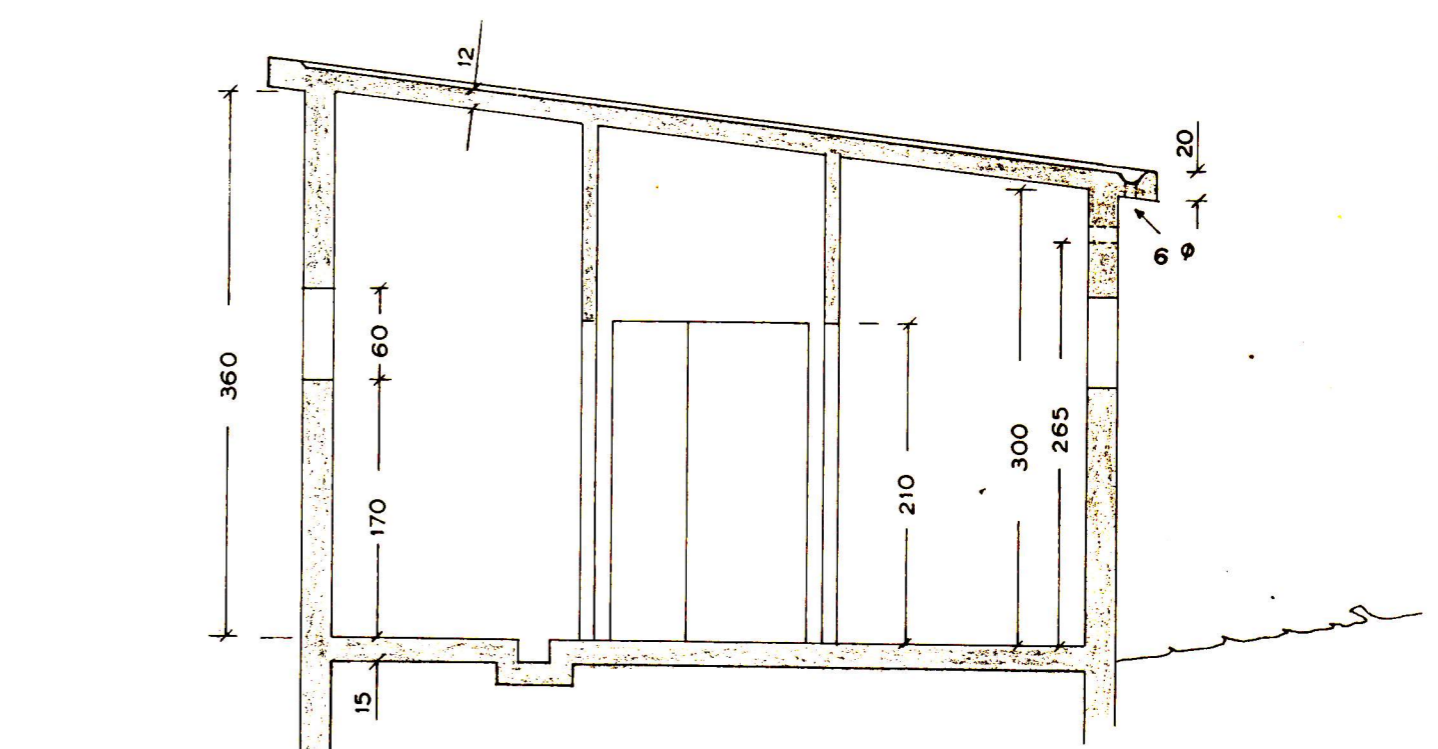
Suðvesturgafi



Láréttar og lóðréttar rifur = 10 cm. breiðar  
Norðausturgafi



Gólf á salerni halli að rist  
Stokkur í vélaherbergi halli að rist



Snið A - A  
Undirstöður sprengist ca. 80 cm. niður í klöpp

Handwritten notes and calculations in the bottom left corner, including numbers like 12, 54, 12, 10, 8, 6, 4, 3, 2, 1, 0.

<b>LANDSSIMI ÍSLANDS</b>		
Teiknað 1.7. 61 G.A.	M=1:50	Blað af
Staðf. SB		
STUTTBILGJUSTÖÐ SÆFJALLI		A-5307