

NYJABÆJARBRAUT 8B VESTMANNAEYJUM

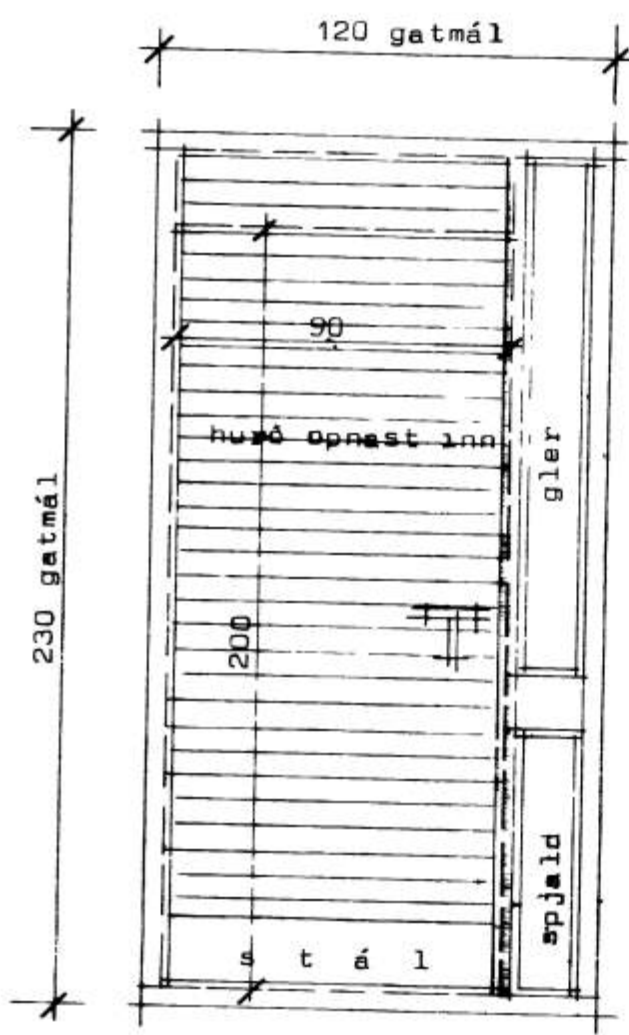
SAMP/KKT I BYGGINGANERND

27-11-79

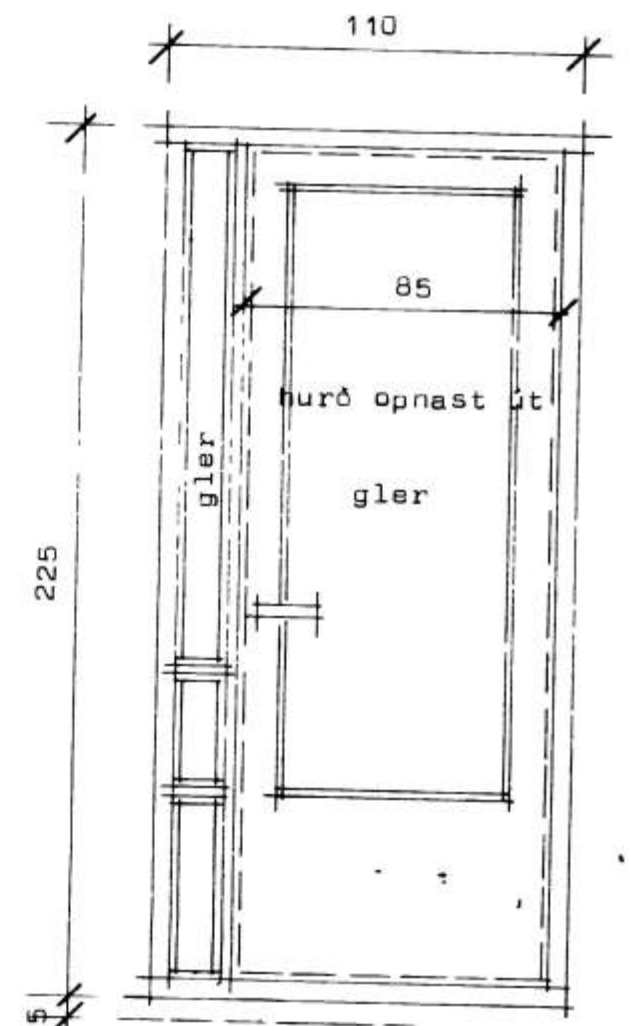
BYGGINGAFULLTRÚD VESTMANNAEYJUM

Ólafur M. Björnsson

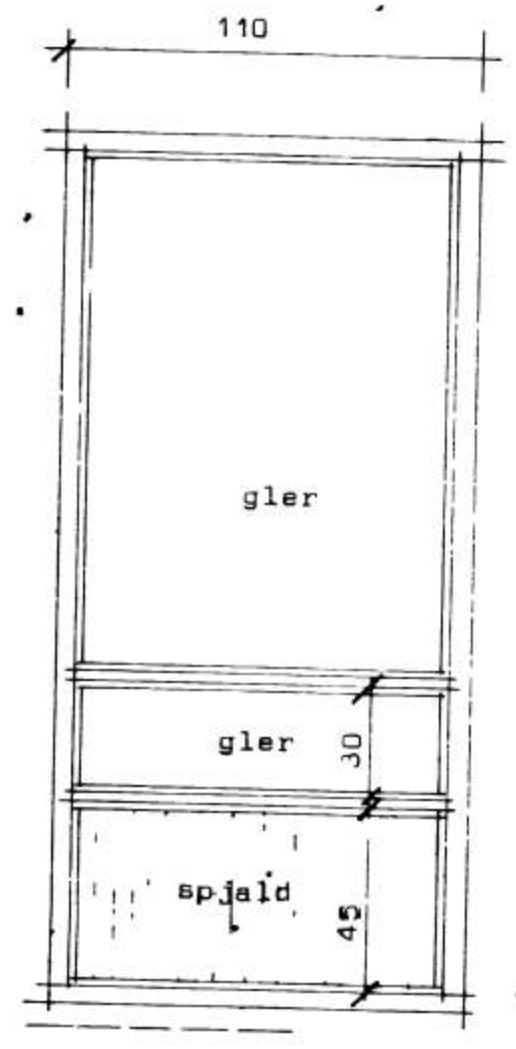
502



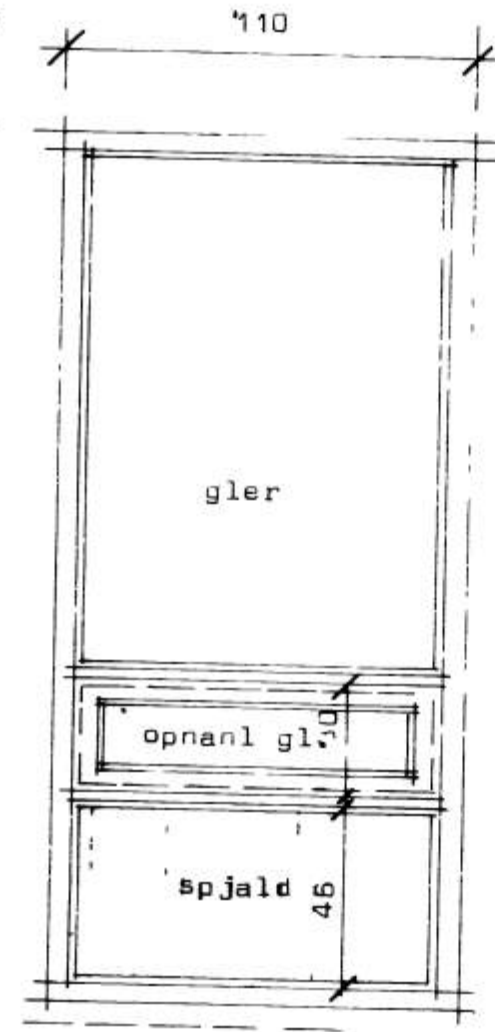
1 stk aðalhurð



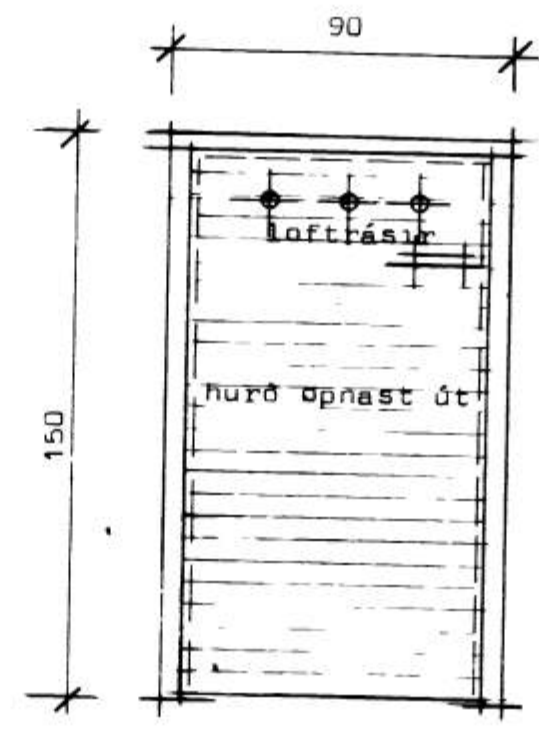
1 stk garðhurð



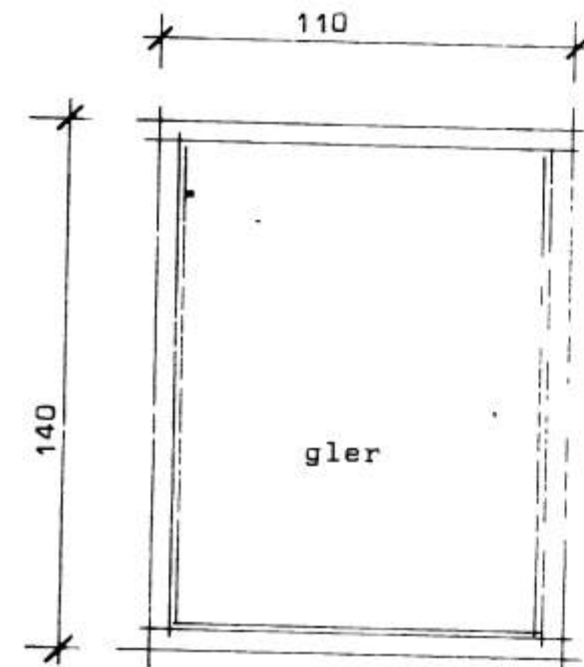
2 stk í stofu



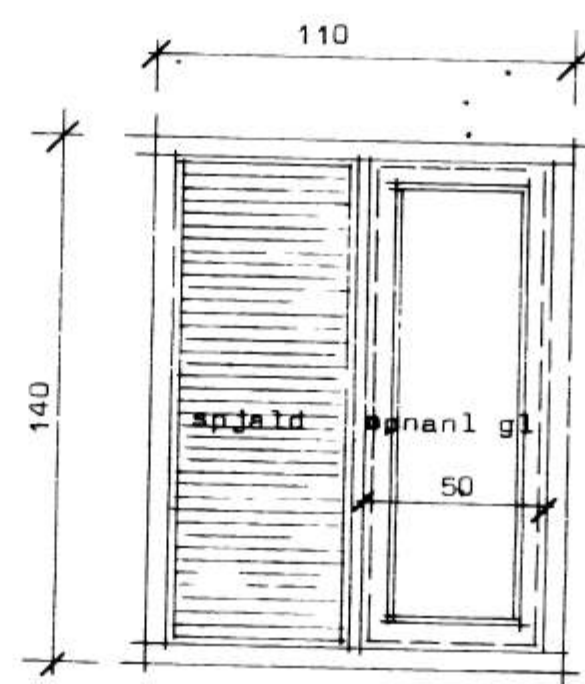
1 stk í stofu



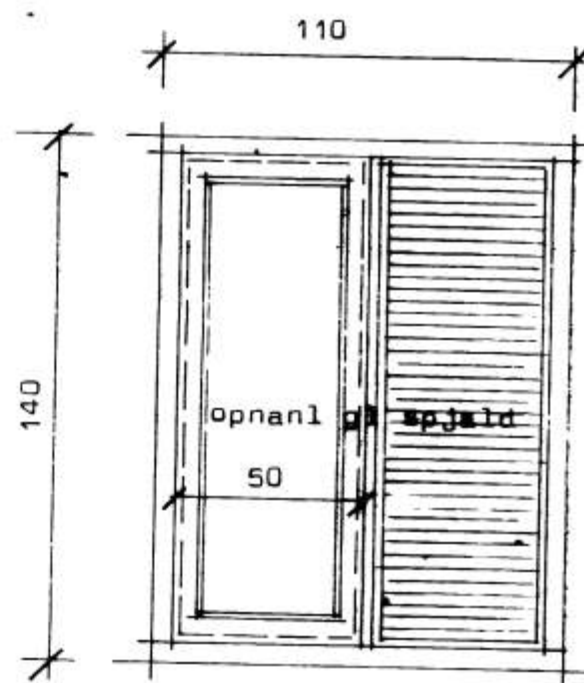
1 stk f sorpg.



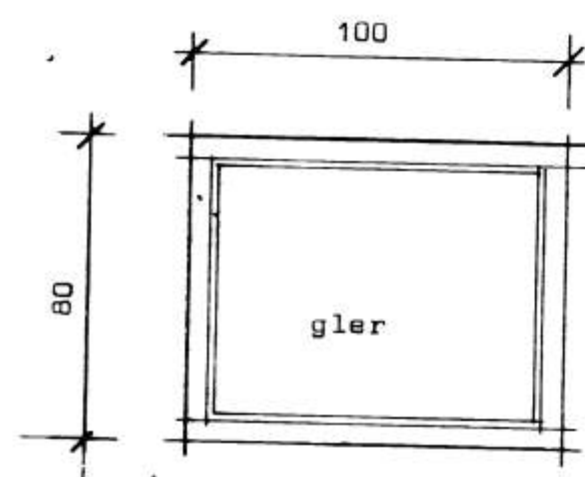
6 stk í herb og eldhús



2 stk



6 stk



7 stk í kjallara

Heildarmál af hurð sem sett er í á eftir takist á staðna.
 Í gluggum sé valin fura eða oregonpine
 Opnanlegir gluggar eru topphengdir.
 Gluggar séu fúavardir frá verkstaði.

STADALHÚS TÍÐ
 TEIKNISTOFA SÍÐUMÚLA 31 SÍMI 821

VERKEFNI	DAGS.	1979	TEIKN NR ST 100
Hurðir og gluggar	MKV.	1:20	
Nýjabæjarbraut 8B Vestmannaeyjum.	BR.		
	BLAÐ NR.		

Ólafur M. Björnsson *Einar Jón Þ. Körtveit*
 STADALHÚS STADALHÚS