













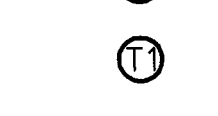



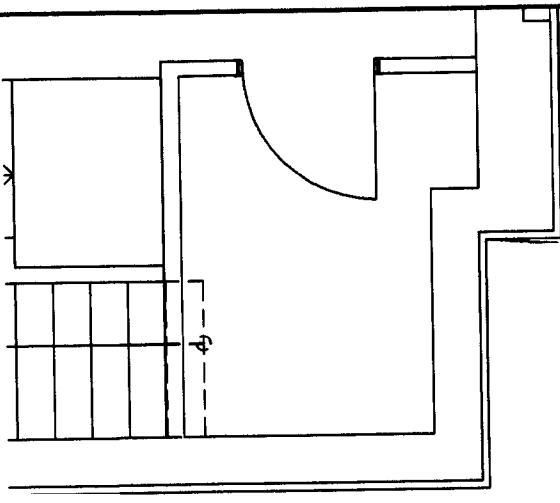


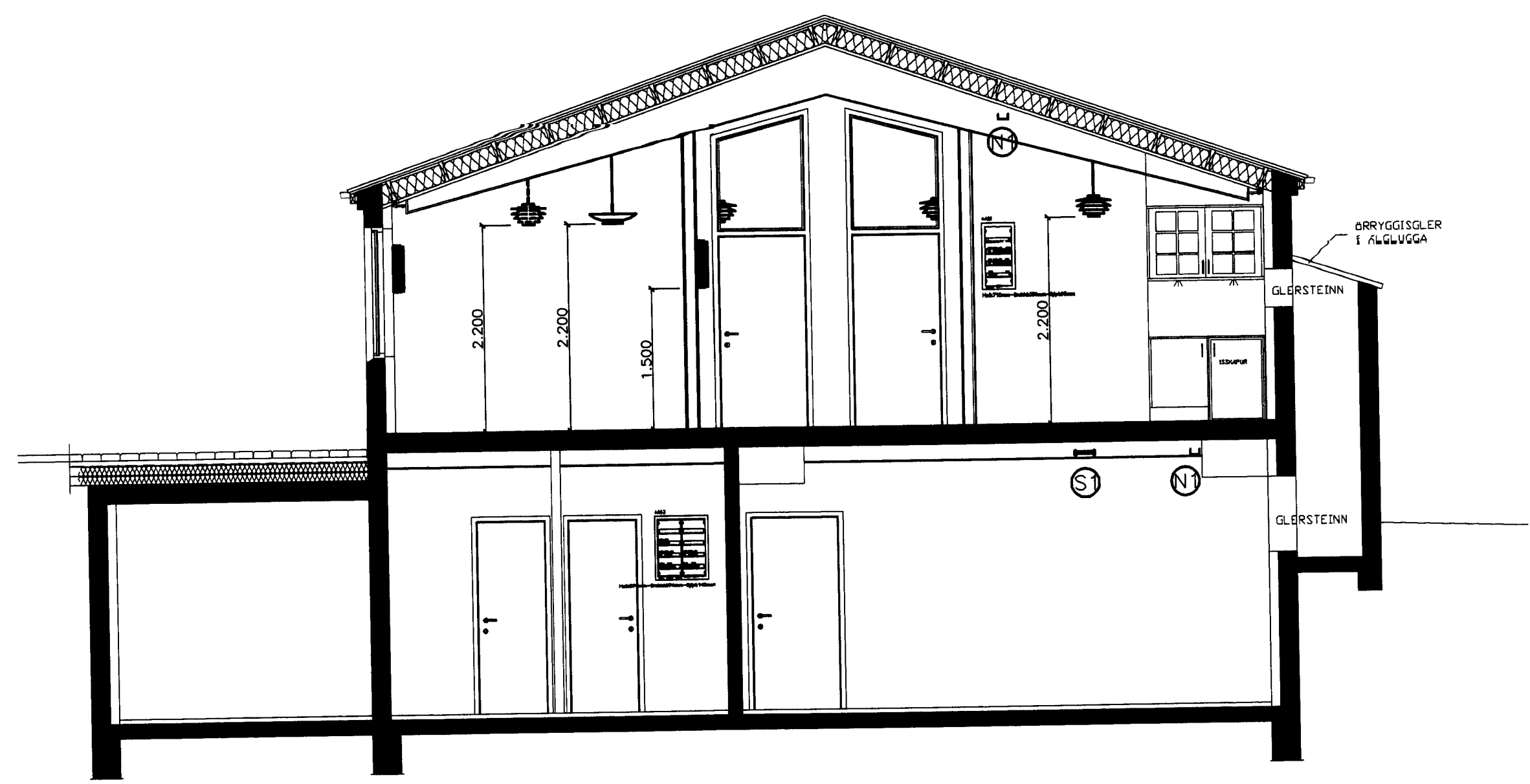
SKÝRINGAR LAMPA

-  L1 4x14W INNFELLDUR LAMPI Í KERFISLOFT MATT PARABÓLUGRILL, TVÖFÖLD KVEIKING
-  L2 2x36W HANGANDI LAMPI
-  L3 2x18W TIL NOTKUNAR Í KERFISLOFT
-  L4 1x100W HANGANDI LAMPI 100W GLÓPERA Í LAMPA
-  L5 2x36W FESTIST BEINT Á LOFT
-  L6 2x18W INNFELLDUR - IP 44
-  L7 2x36W FESTIST BEINT Á LOFT

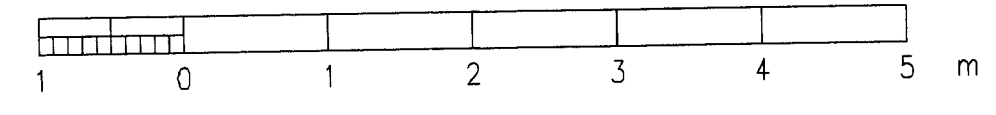
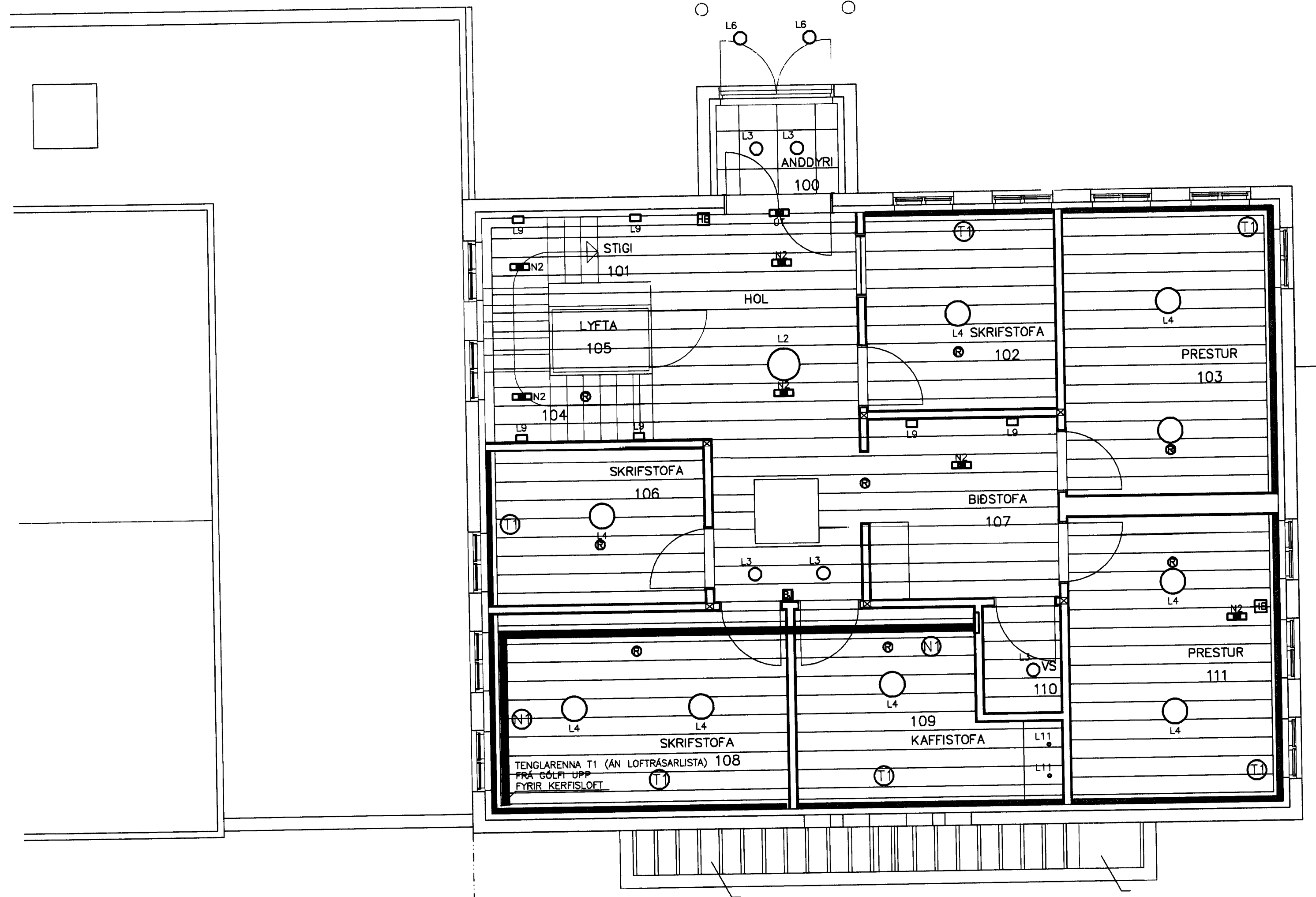
-  L8 4x14W INNFELLDUR LAMPI Í KERFISLOFT HVÍT ÓPALLJÓSHLIF
-  L9 1x28W FESTIST Á VEGG
-  L10 1x18W FESTIST BEINT Á VEGG, SMÍDADUR KAPPI FYRIR LAMPA
-  L11 1x20W 12V HALOGENLAMPI TIL INNFELLINGAR Í INNRÉTTINGU LITUR HRINGS AD VALI ARKITEKTS
-  L12 NEYDARLJÓS 1x8W INNBYGGD RAFHLADA, FESTIST BEINT Á VEGG LJÓS Í 1 KLUKKUSTUND EFTIR STRAUMLEYSI
-  L13 NEYDARLJÓS 1x8W INNBYGGD RAFHLADA, INNFELT Í KERFISLOFT LJÓS Í 1 KLUKKUSTUND EFTIR STRAUMLEYSI
-  L14 ÚT/EXIT-LJÓS 1x8W INNBYGGD RAFHLADA LJÓS Í 1 KLUKKUSTUND EFTIR STRAUMLEYSI
-  S1 STRENGSTIGI GALVANHÚÐADUR 200 mm
-  S2 STRENGJANETRENNNA GALVANHÚÐUD 100 mm x 62 mm
-  N1 ÁL LAGNARENNA 161x72 mm MED 56 mm LOFTRÁSARLISTA MINNA HÓLF FYRIR SMÁSPENNULAGNIR OG STÆRRA HÓLF FYRIR LÁGSPENNULAGNIR OG RAFBÚNAD
-  N2 ÁL LAGNARENNA 123x72 mm MED ÁL SKILRÚMI SEM HÓLFAR LAGNARENNUNA MILLI LÁGSPENNULAGNA OG SMÁSPENNULAGNA



SAMÞYKKT AF BYGGINGARFULLTRÚA
 03.12.2008
 BYGGINGARFRÆÐINGAR Í VESTMANNNAEKJUM



SNID C-C



Egji með fjárláttá þessu teikningu til, notkunar fyrir þróun, eða breytingu á milli teikninga.

										HANNAÐ DH TEKN. DH YFIRF. KEG SAMP. HG VERKNR. 9531 GEYMSLUNR.		RAFTEIKNING HF RÁÐGJAFARVERKFRÆÐINGAR CONSULTING ENGINEERS	LANDAKIRKJA – SAFNADARHEIMILI 2. HÆÐ VESTURHLUTI LAMPAR OG LAGNALEIÐIR					
ÓTG.	DAGS.									TEKNI.	BREYTTI			YFIRF.	SAMP.	DAGS.	03.12.08	TEKNI. NR. 30.5.201