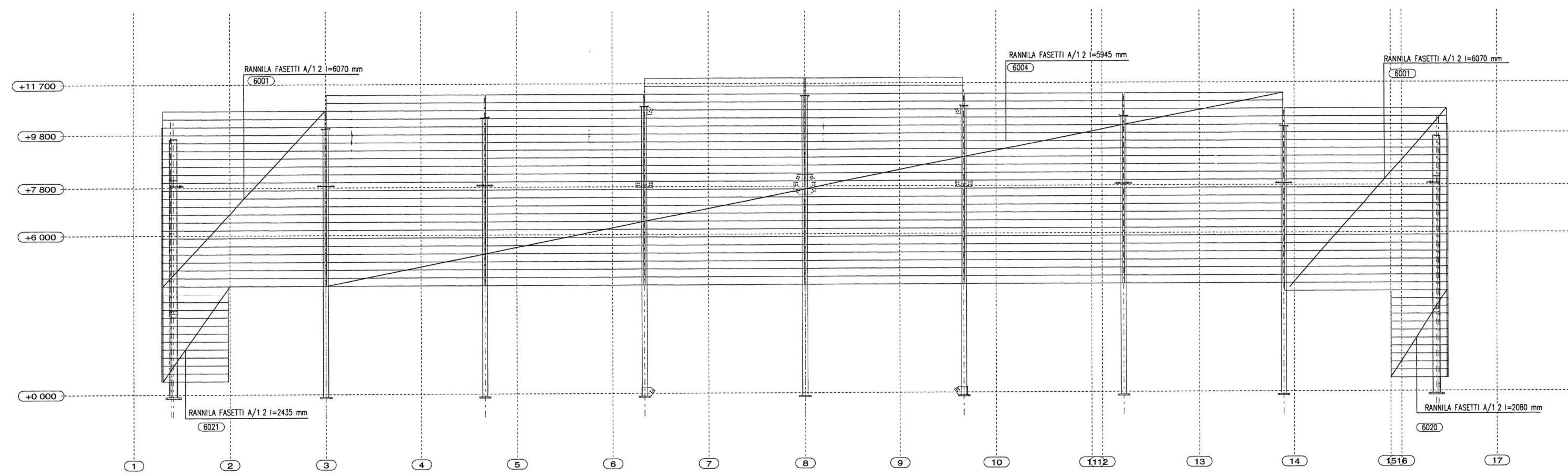


ASSEMBLY LIST					
MARK	DESCRIPTION	RSD	LENGTH	WEIGHT	QWS

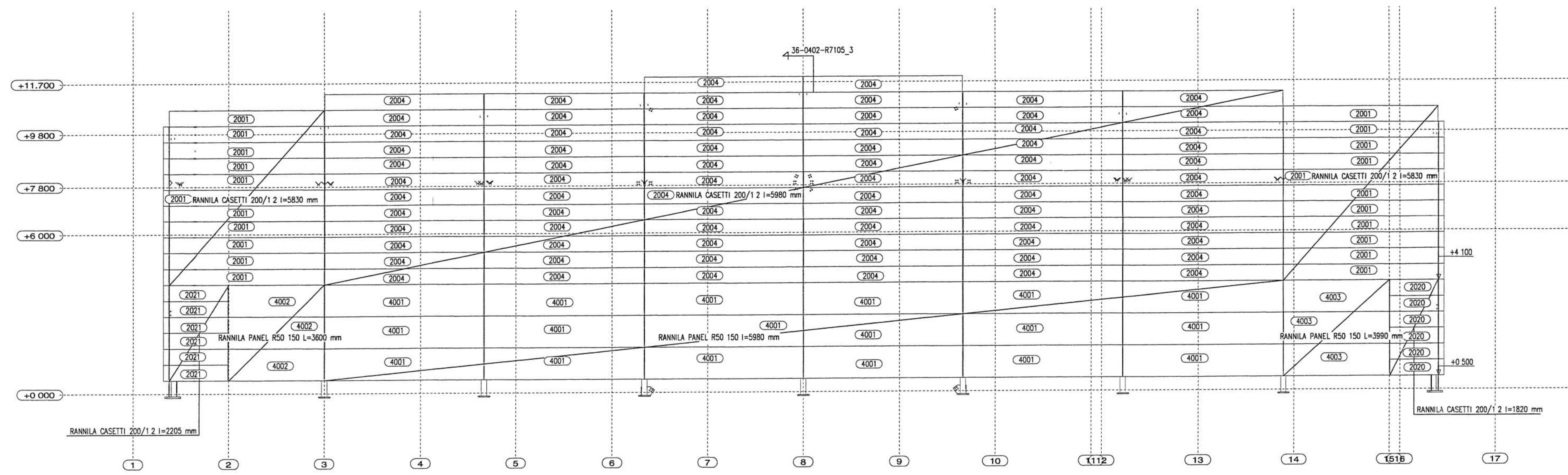
REFERENCES	
DEFAULT WELDING	UNLESS OTHERWISE NOTED
WELDING CLASS	
CLASS OF CUTTING	
SURFACE TREATMENT	
PAINING	

MONTAGE OF THE CASSETTES - SEE THE INSTRUCTIONS OF SUPPLIER
 FASTENING SCREWS
 CASSETTI 200/1,2, 1,5 / COLUMN P200x8 SD12-T15-5.5x36 cc 300
 CASSETTI 200/1,2, 1,5 / COLUMN HE3008 TDB-T-116-6.3x38 cc 300
 CASSETTI 200/1,2, 1,5 / CASSETTI 200/1,2, 1,5 SL3-H15-6.3x32 cc 300
 PANEL R50 150 / COLUMN SX12-519-5.5x191 3 PCS/HEAD

RANNILA FASETTI A



RANNILA CASSETTI 200/1,2
 RANNILA CASSETTI 200/1,5 PERFORATED
 RANNILA PANEL 150



DATE	NO.	REVISION	PURPOSE	
			A - FOR DESIGN	B - FOR INFORMATION
31/10/2000	A	PANELS ADDED	2	0
			1	0

DATE	NO.	REVISION	REV. BY
31/10/2000	A	PANELS ADDED	AV

AARO KOIKIONEN OY
 consulting engineers

Project name: Rannila Steel Oy
 Sport Hall / Iceland

Scale: 1:200 - R

Date: 18.10.2000
 Drawing No: 36-0402 -7114

Rev. 1/75