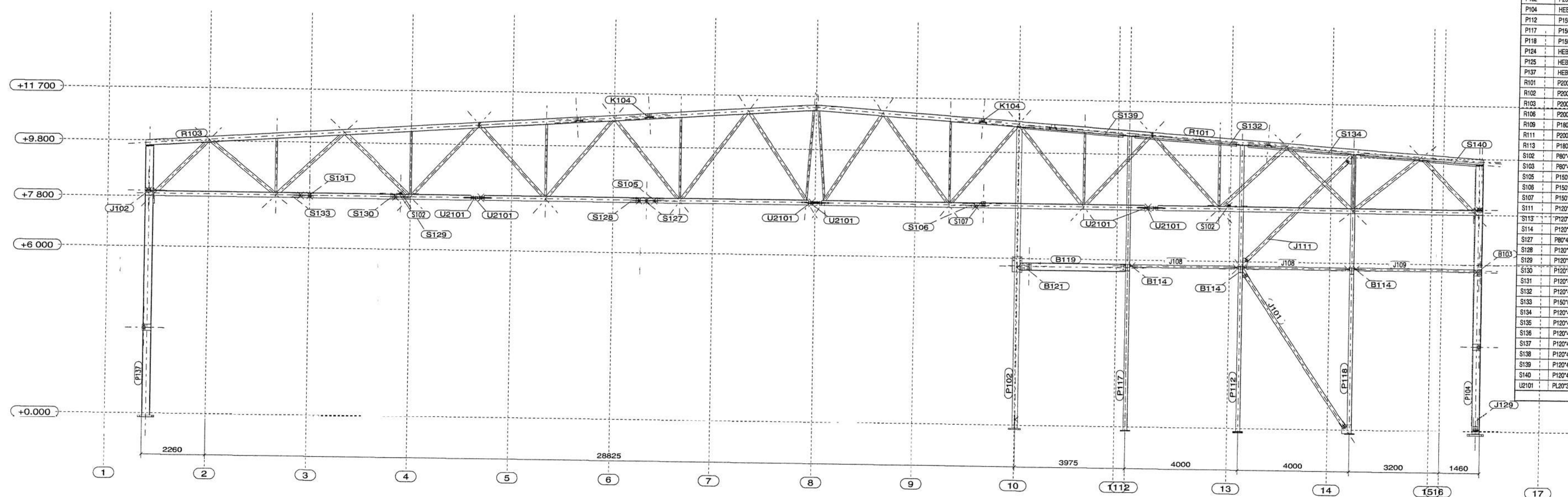


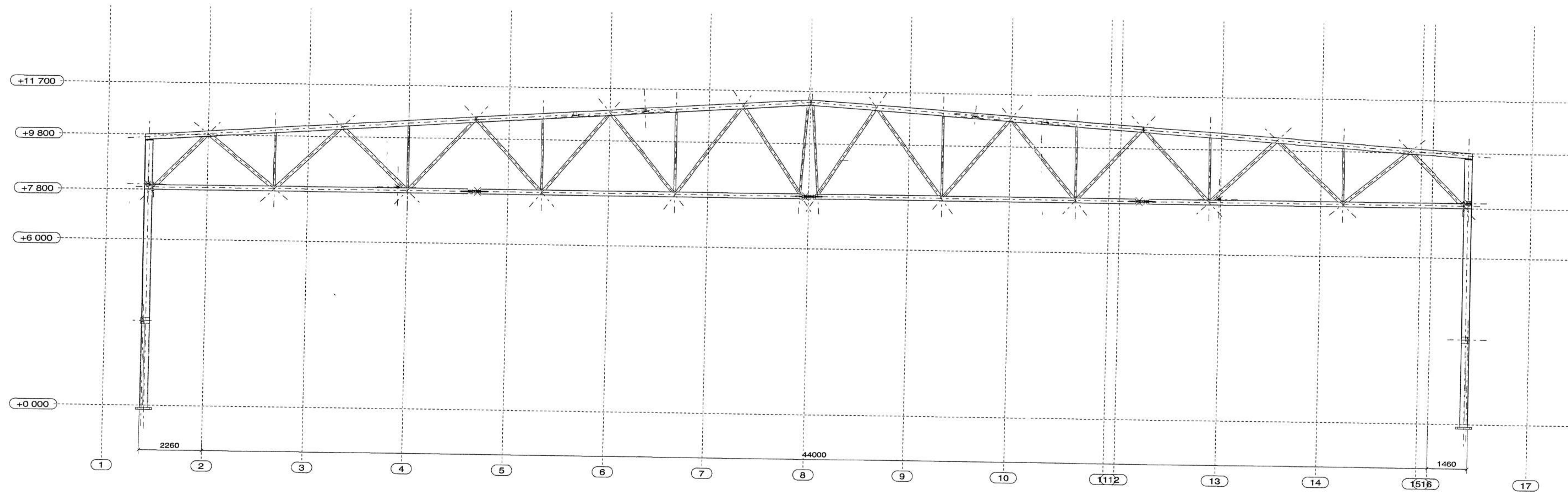
LINE S



MARK	DESCRIPTION	REC	LENGTH	WEIGHT	DWG
B102	P1078	1	4964	209.2	4323 / B
B103	PE240	1	5380	179.0	4320 / B
B114	PE240	2	4298	182.3	4320 / B
B119	PE270	1	3740	141.3	4320 / B
B121	PE240	1	5380	179.4	4320 / B
J101	P1074	1	5583	101.1	4511 / A
J102	P1074	1	5429	113.8	4511 / A
J106	P1074	2	5949	122.3	/
J107	P1074	1	7508	179.0	4511 / A
J108	P1074	2	3790	50.6	4511 / B
J109	P1074	1	4378	58.2	4511 / B
J111	P1074	1	8232	82.6	4511 / B
J113	P1074	2	5949	122.7	4511 / A
J123	P1074	1	7733	198.4	4511 / B
J133	P1074	1	3642	47.8	4511 / A
K103	P1074	2	5573	242.3	4511 / B
K104	P1074	2	5790	248.8	4511 / B
K106	P1074	2	5676	72.8	4511 / A
K107	P1074	1	3510	41.3	4511 / C
K110	P1074	1	3020	38.2	4511 / A
K112	P1074	1	3020	38.2	4511 / A
K114	P1074	1	5585	82.7	4511 / C
P102	P1074	1	10674	169.8	4128 / A
P104	HE300	1	9725	132.4	4128 / A
P112	P1075	1	10382	279.3	4140 / A
P117	P1075	1	10333	269.6	4144 / A
P118	P1075	1	10295	275.3	4146 / A
P124	HE300	1	9725	132.2	4116 / A
P125	HE300	1	9725	134.8	4117 / A
P127	HE300	1	9725	134.8	4137 / A
R101	P1074	1	11600	145.0	4021 /
R102	P1074	2	11900	148.6	4012 /
R103	P1074	1	11900	153.9	4022 /
R106	P1074	1	12190	148.6	4011 / A
R109	P1074	1	12000	150.8	4022 / A
R111	P1074	1	12128	146.3	4015 / B
R113	P1074	1	12000	153.3	4022 / A
S102	P874	2	5820	60.9	4411 / A
S103	P874	2	5820	60.9	4411 / A
S105	P1074	1	7727	159.5	4411 / B
S107	P1074	1	7724	159.2	4411 / B
S107	P1074	1	5389	225.3	4511 / A
S111	P1074	1	6648	102.9	4411 / B
S113	P1074	1	5171	87.2	4411 / B
S114	P1074	1	5065	79.8	4411 / B
S127	P874	1	5335	58.6	4411 / A
S128	P1074	1	7744	124.8	4411 / A
S129	P1074	1	6004	99.9	4411 / A
S130	P1074	1	6565	101.2	4411 / A
S131	P1074	1	5211	88.3	4411 / A
S132	P1074	1	3831	60.9	4411 / B
S133	P1075	1	7512	214.9	4411 / A
S134	P1074	1	3209	41.3	4411 / B
S135	P1074	1	5028	97.2	4411 / B
S136	P1074	1	5028	79.3	4411 / B
S137	P1074	1	5749	88.6	4411 / B
S138	P1074	1	5885	91.0	4411 / B
S139	P1074	1	3728	60.3	4411 / B
S140	P1074	1	4540	70.7	4411 / C
U2101	PL27/20	12	440	22.1	/
TOTAL WEIGHT FOR 82 ASSEMBLIES					25961

REFERENCES	
DEFAULT WELDING	6.1 UNLESS OTHERWISE NOTED
WELDING CLASS	WC
CLASS OF OXYGEN CUTTING	II
SURFACE TREATMENT	F8a 2.5
PAINTING	E 303 RAL XXXX

LINE T



PHASE	DATE	BY	FOR
1 - PRELIMINARY			
2 - APPROVED FOR DESIGN			
3 - APPROVED FOR CONSTRUCTION			
4 - FOR DESIGN			
5 - FOR PERMITS			
6 - FOR INFORMATION			
7 - TO BE CHECKED AND RETURNED			

DATE	NO	REVISION	REV BY	APPROV

**AARO KOHONEN OY**  
consulting engineers

Project name: **Rannia Steel Oy**

Client: **Sport Hall / Iceland**

Structure: **Steel structures**

Section: **Sections**

Scale: **1/75**

Drawn by: **FR**

Checked by: **FR**

Date: **15.08.2000**

Project No: **36-0402 -7013**