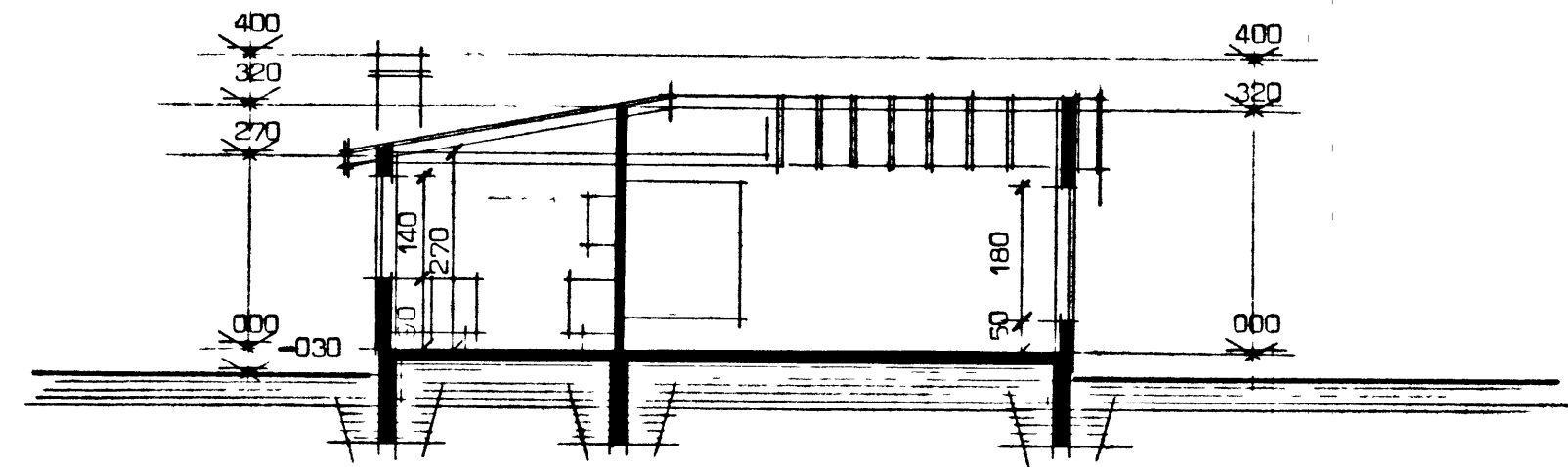
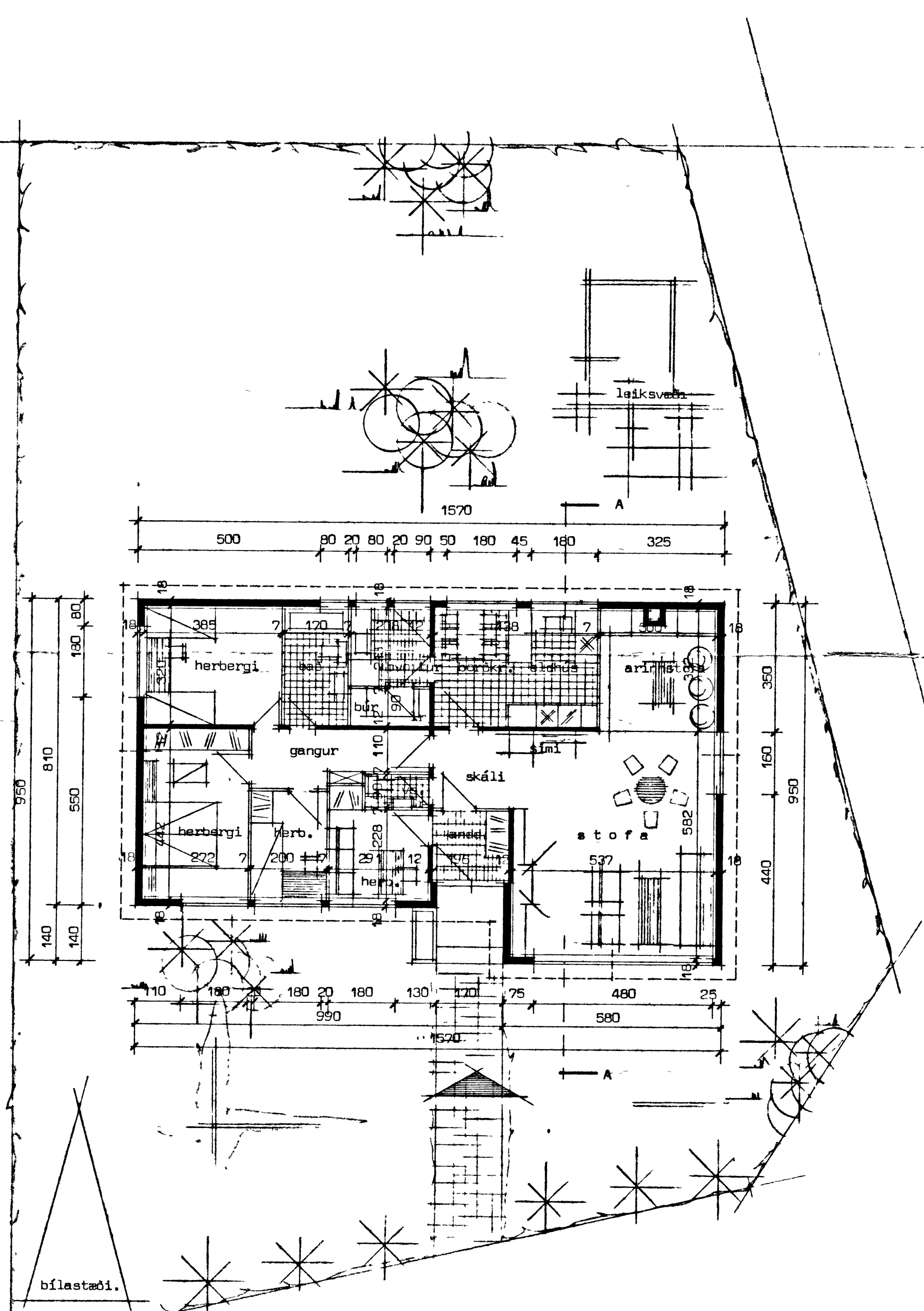


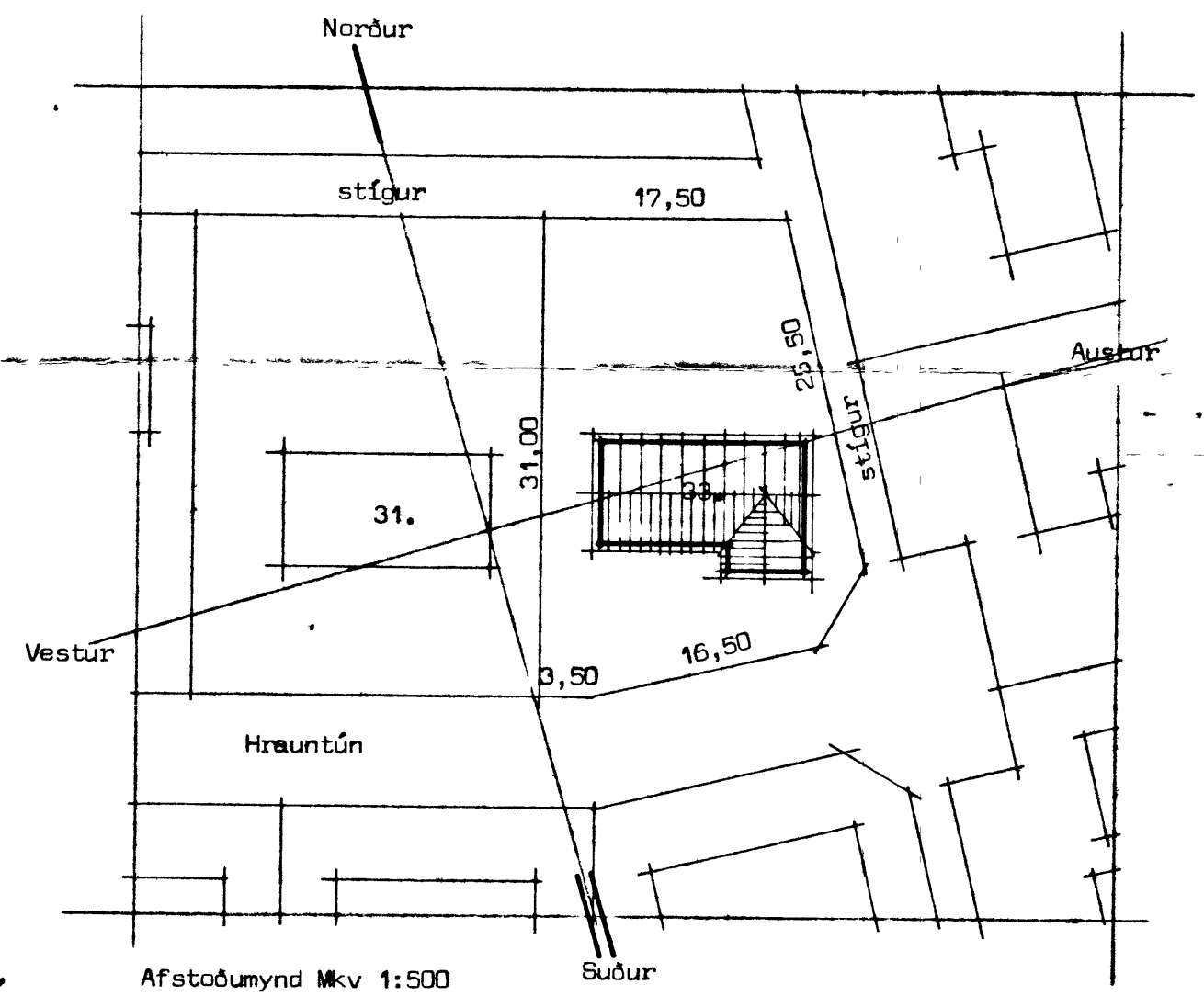
HRAUNTÚN 33 VESTMANNAEYJUM



Sneiðing A-A

Brúttóflatarmál húss er134,44 m²
 Nettóflatarmál er120,00 m²

1r merkir loftrás upp úr þaki.



Afstöðmynd Mkv 1:500

HÚSNÆÐISTEIKNISTOFAN F.S.

SÚÐURLANDSBRAUT 20 SÍMI 86810

DAGSETNING 1976
 MÆLIKVÆÐI 1:100 1:500
 BREYTING

[Handwritten signature]

Hrauntún 33 Vestmannaeyjum.

bílastaði.

Grunnmynd.