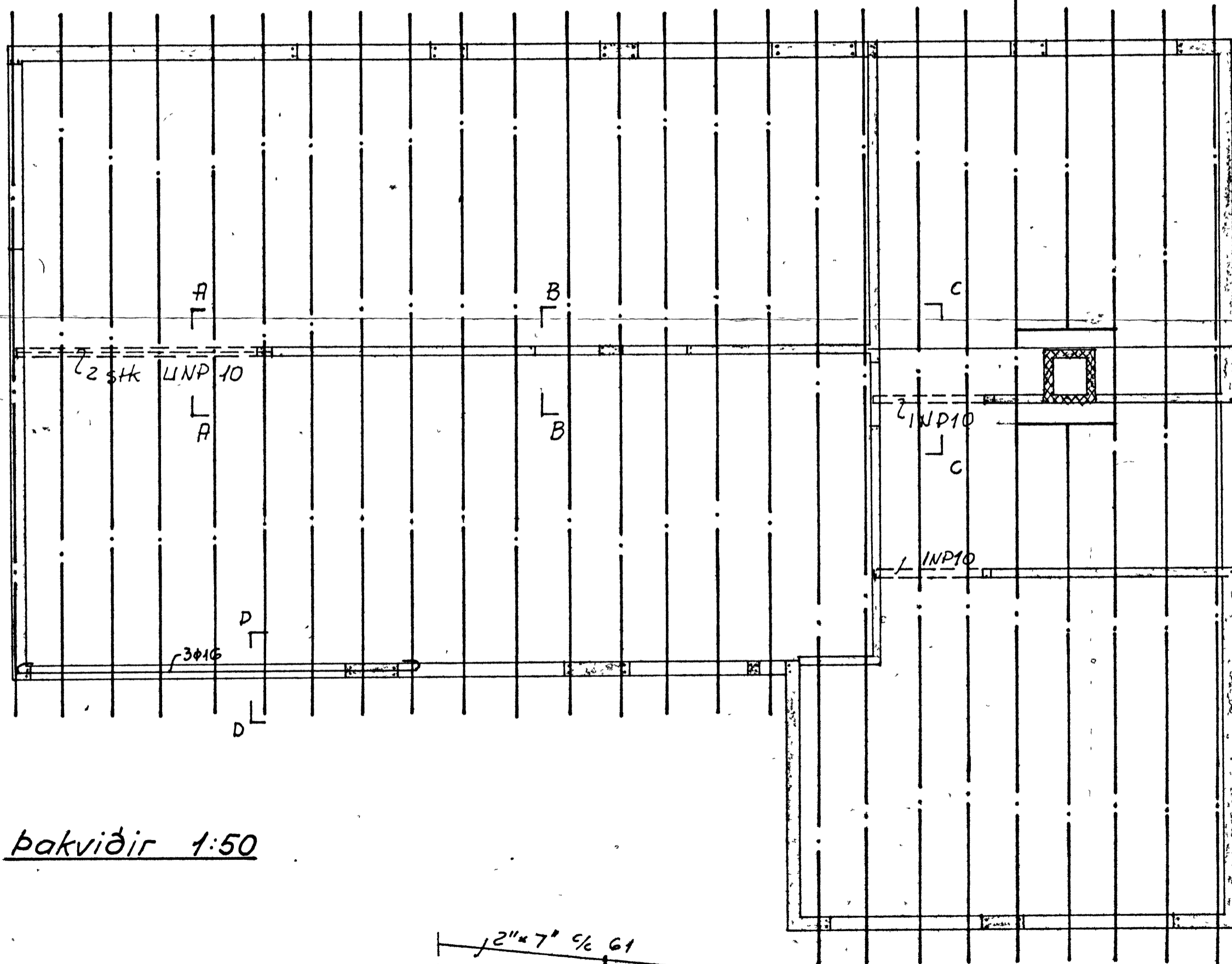
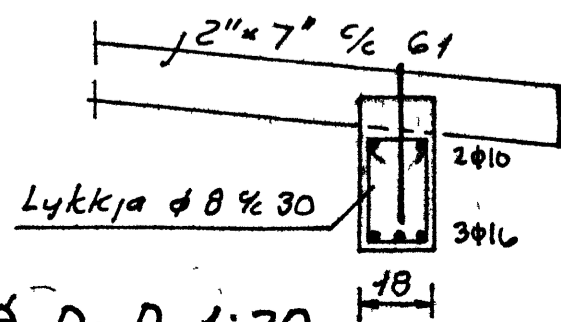


HRAUNTÚN 14

Sperrur 2"x7" c/c 61 cm.

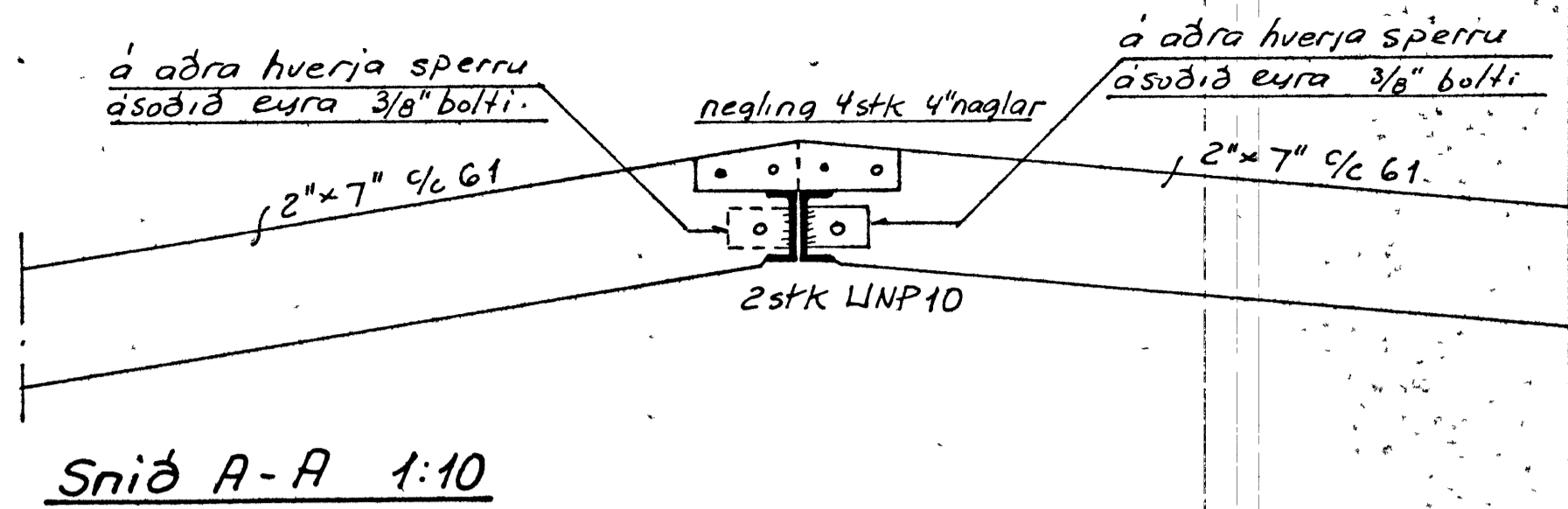


Þakviðir 1:50

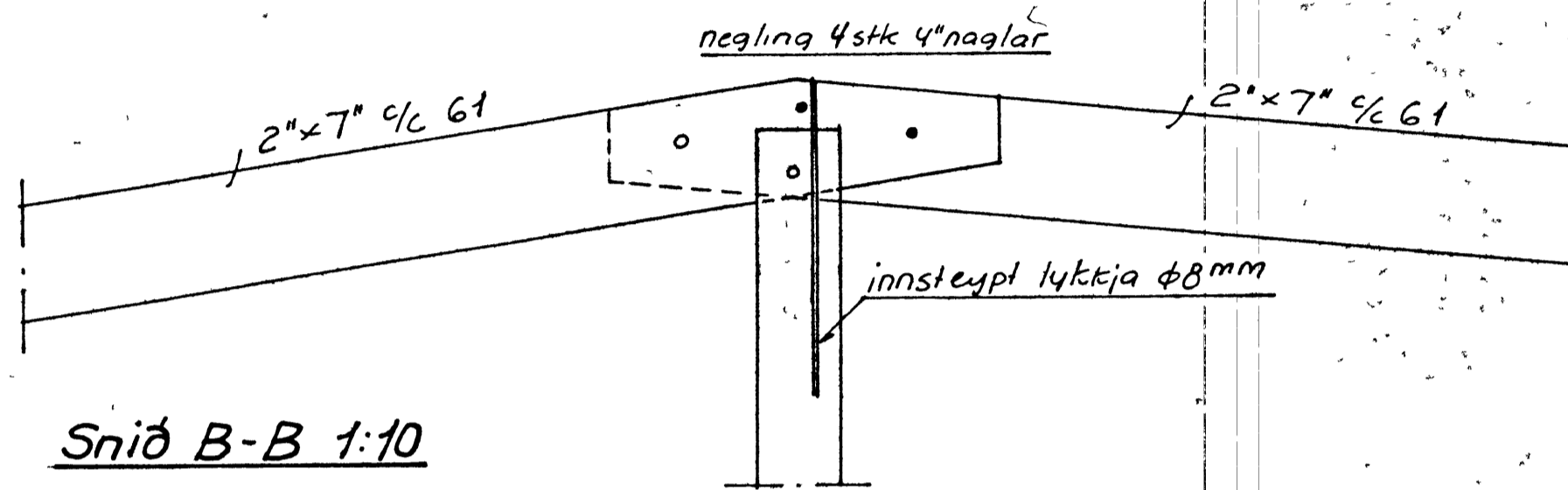


Snið D-D 1:20

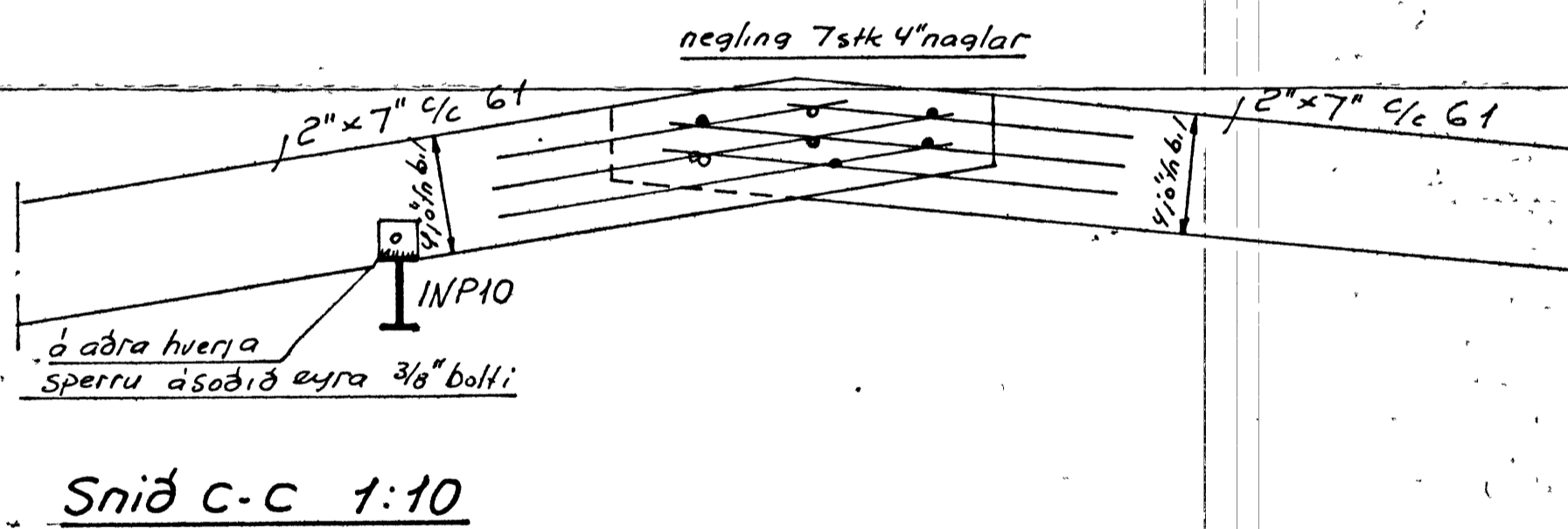
Stálbita skal ryðverja og einangra eftir forskrift arkitekts.



Snið A-A 1:10



Snið B-B 1:10



Snið C-C 1:10

Sperrufestingar: $\phi 8$ mm lykktjur yfir sperrur og innsteyptar um 40 cm.

Innsteypta sperruhluta skal verja með fúavarnarefni.

Húsnæðismálastofnun ríkisins:	Teikn.nr:
Verk nr. 96	R. T. A
Þakviðir.	T. T. A
	A:
	V:
	2-5-1967