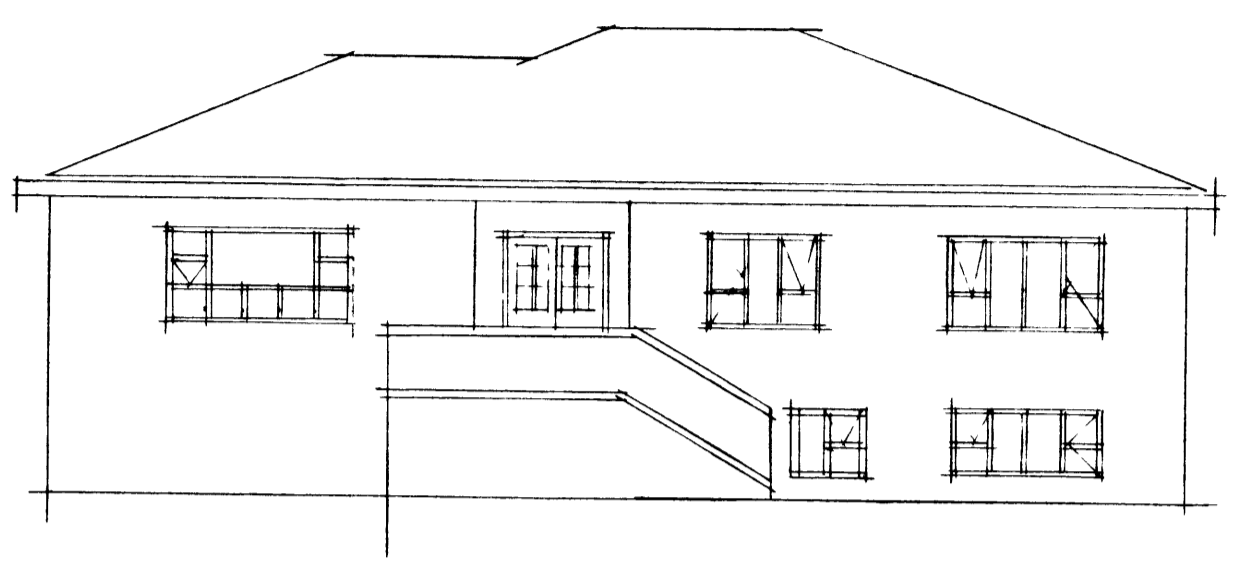


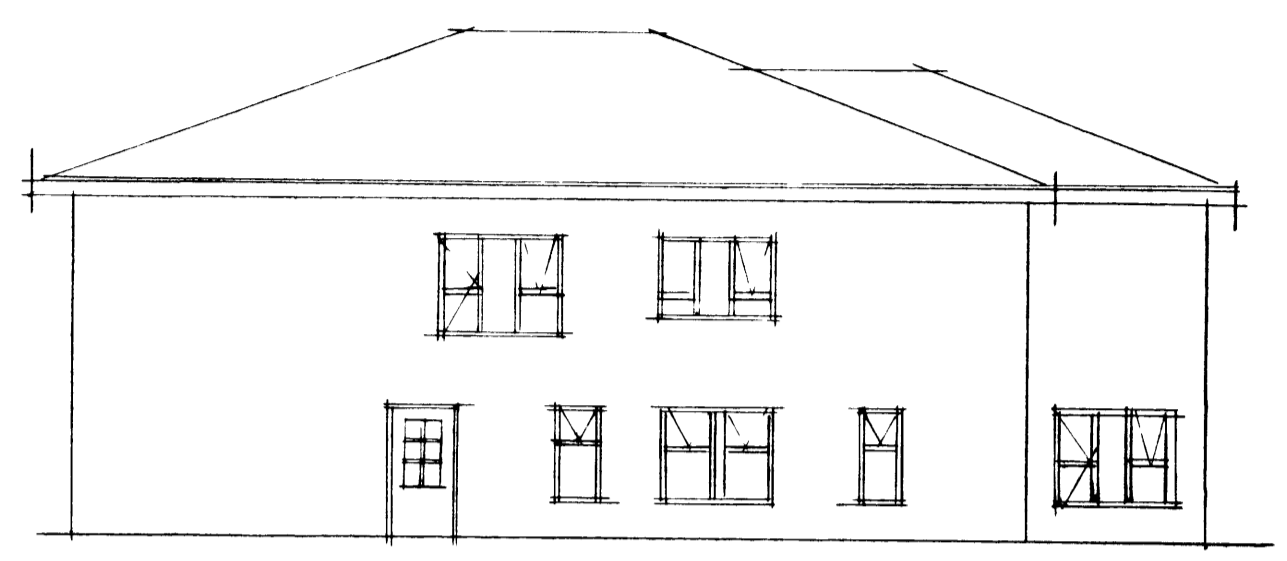


AUSTURHLÍÐ

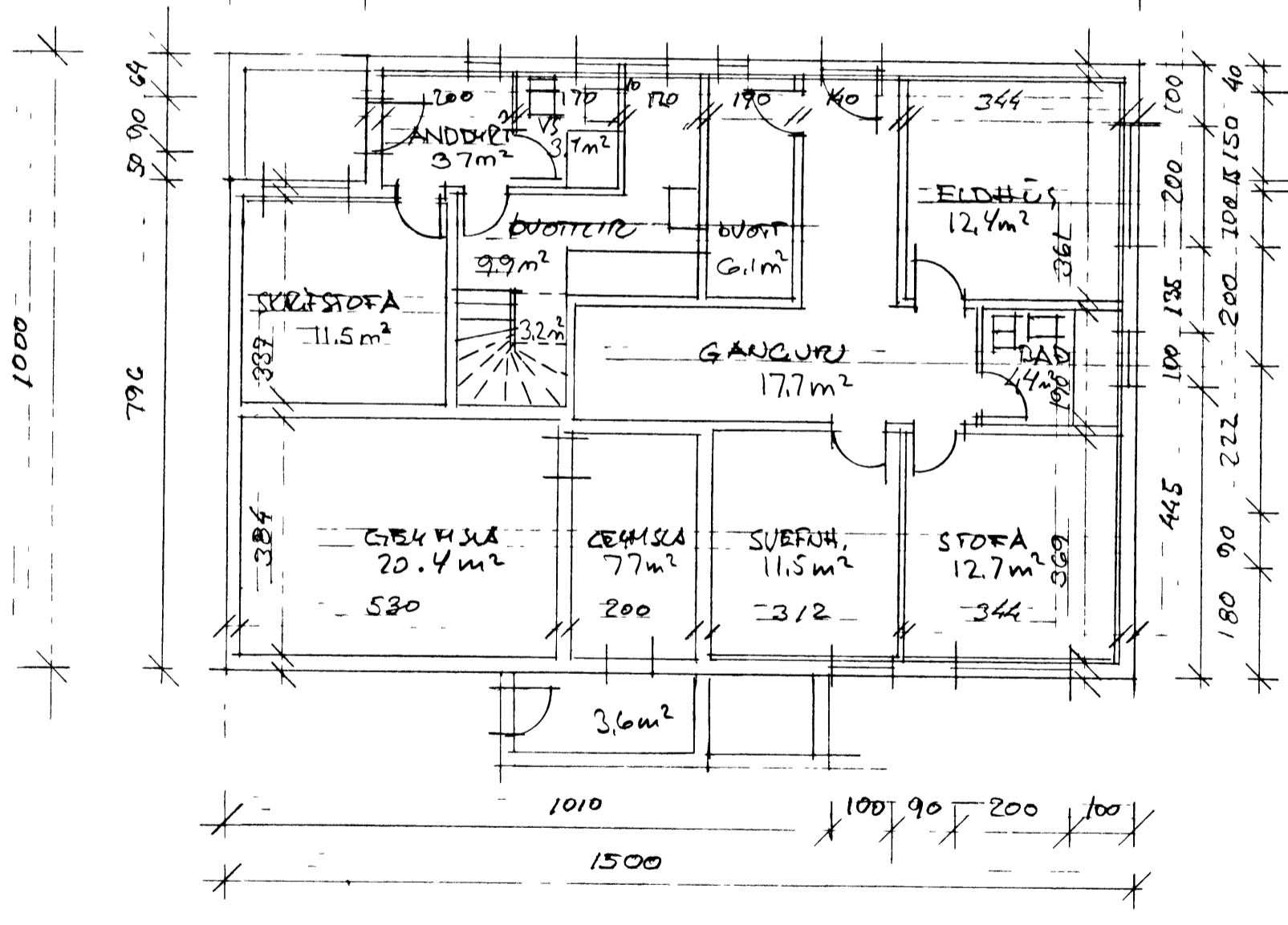
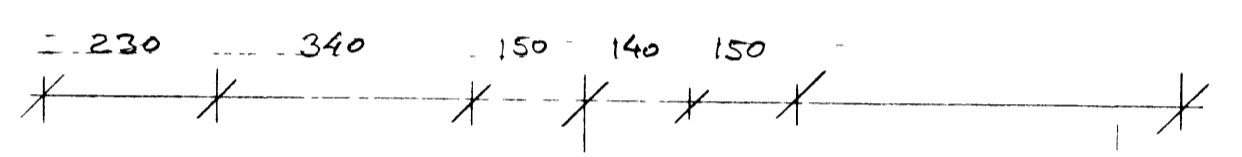
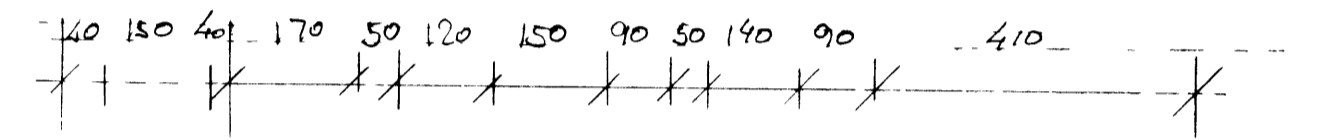
VESTURHLÍÐ



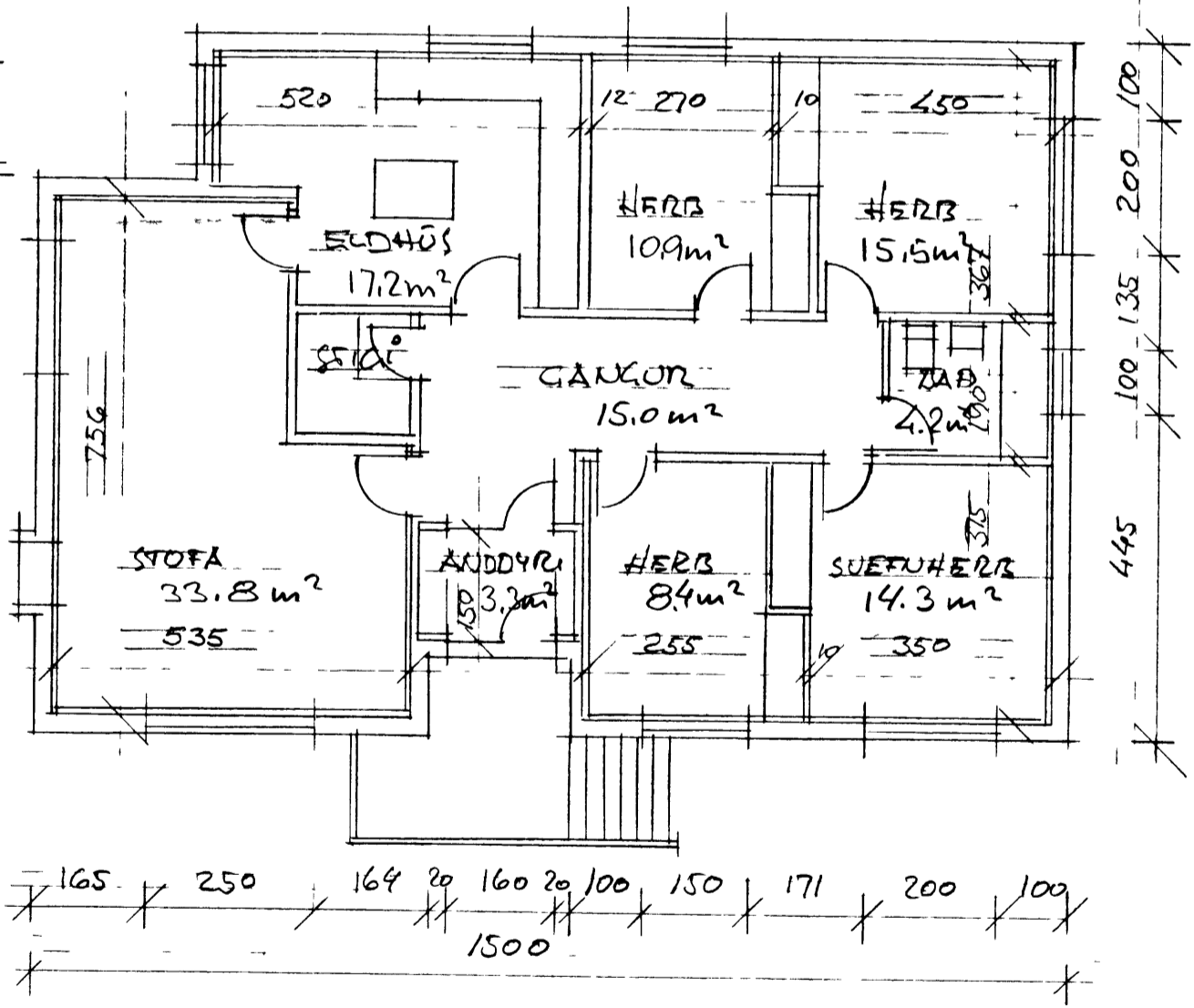
SÚÐURHLÍÐ



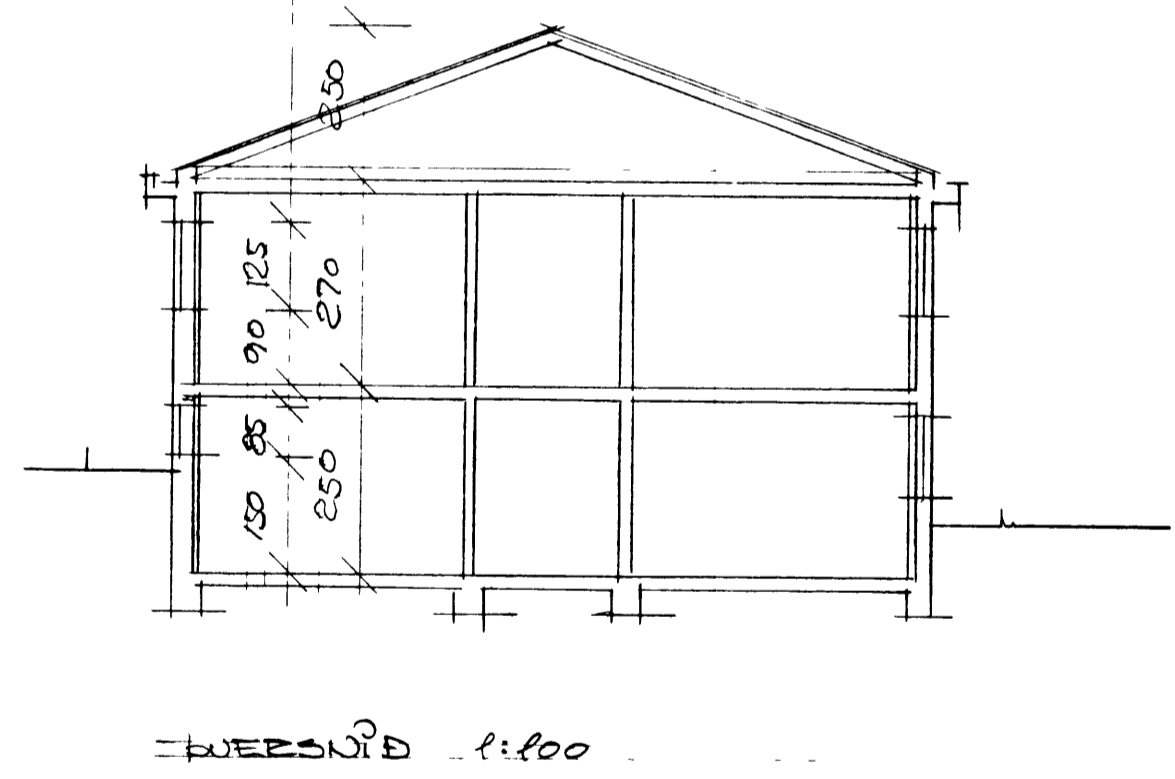
NORÐURHLÍÐ



GRUNNMYND KJALLARÍ



GRUNNMYND 1.HÆÐ



VESTURHLÍÐ 1:100

STADIR	NETO M <sup>2</sup>	BRÜTTU M <sup>2</sup>	M <sup>3</sup>
KJALLARÍ	128 m <sup>2</sup>	150,1 m <sup>2</sup>	390,3 m <sup>3</sup>
1.HÆÐ	125,8 m <sup>2</sup>	142,9 m <sup>2</sup>	385,9 m <sup>3</sup>
BACHÆÐ			208,5 m <sup>3</sup>
SANTALS			984,6 m <sup>3</sup>

HÖLACATA 42 VESTMANNNAEYJUM BÆYTIK Á CLUCCUM  
 GRUNNMYNDIR UTLIT OG SNÍÐ  
 FEBRÚAR 1999  
 MALKUARDI 1:100  
 TEKNISSOFA P2-FRU

TEKNING NR 102  
 VESTMANNNAEYJUM  
 Páll Þórunn