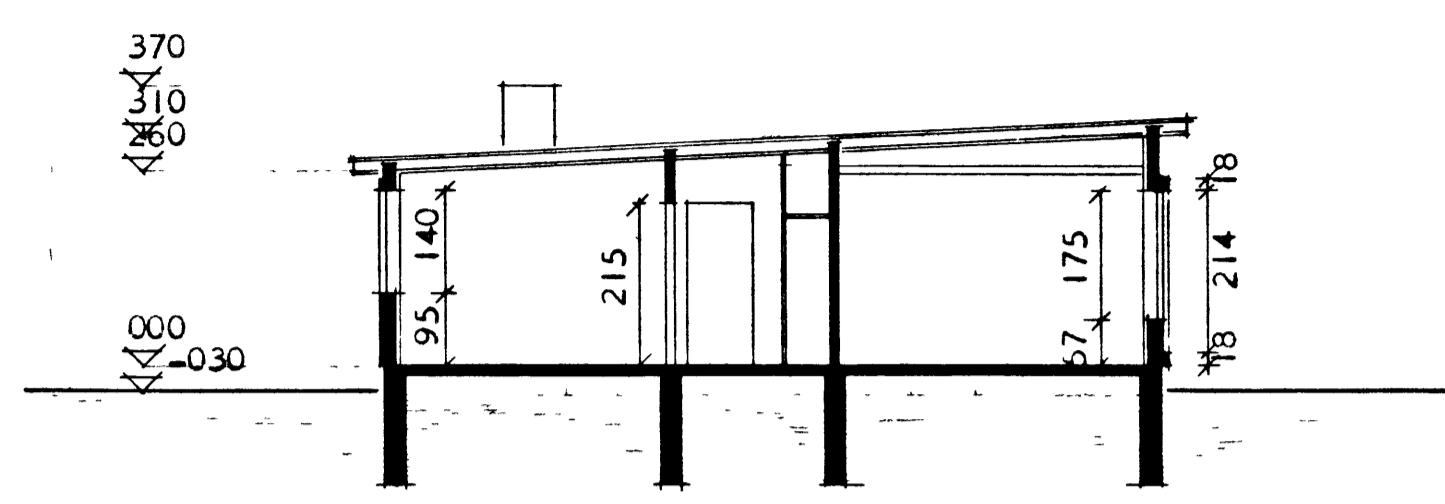
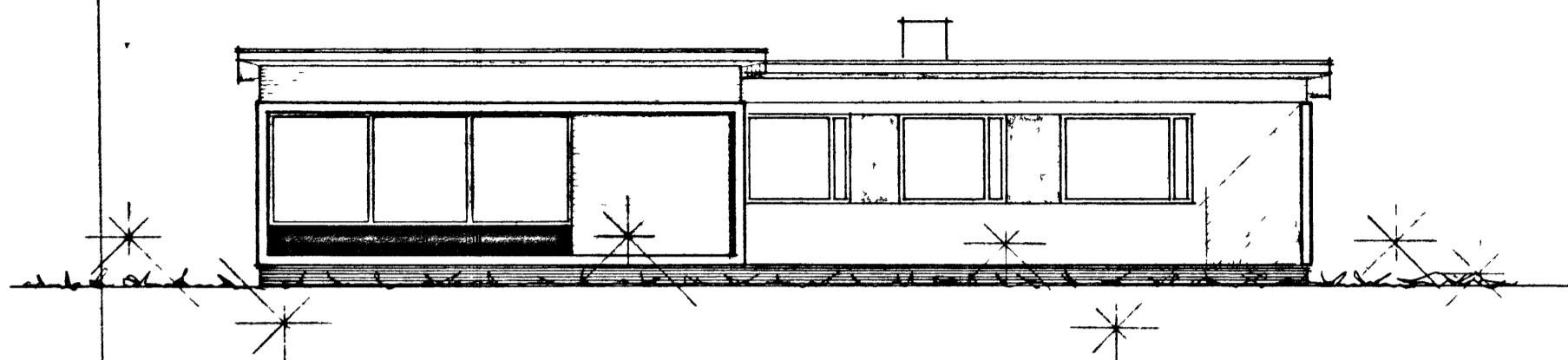


Hús. Guðmundar Kr. Stefánssonar.
Tátnud lóid Höfðaveg. 38.

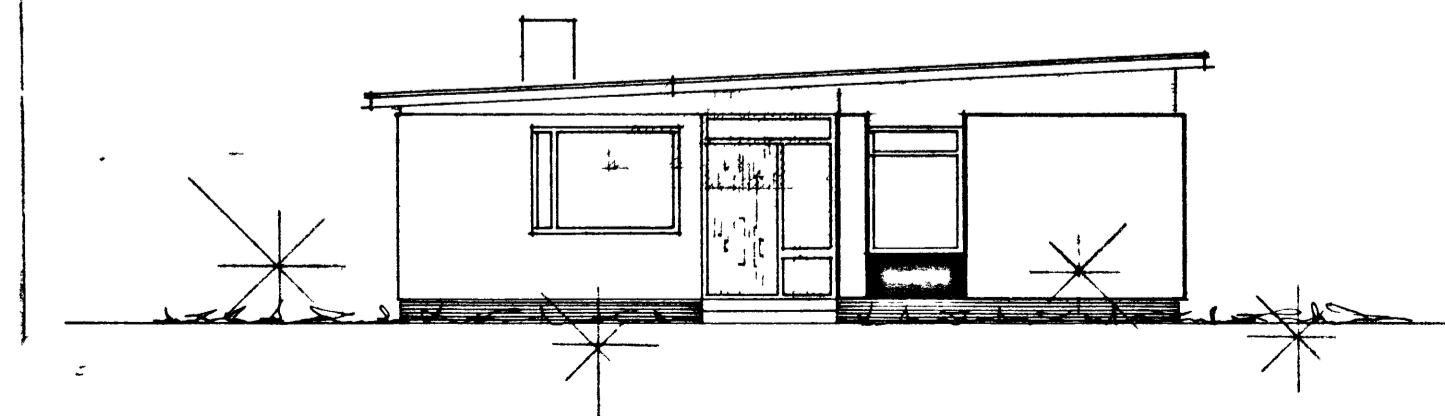
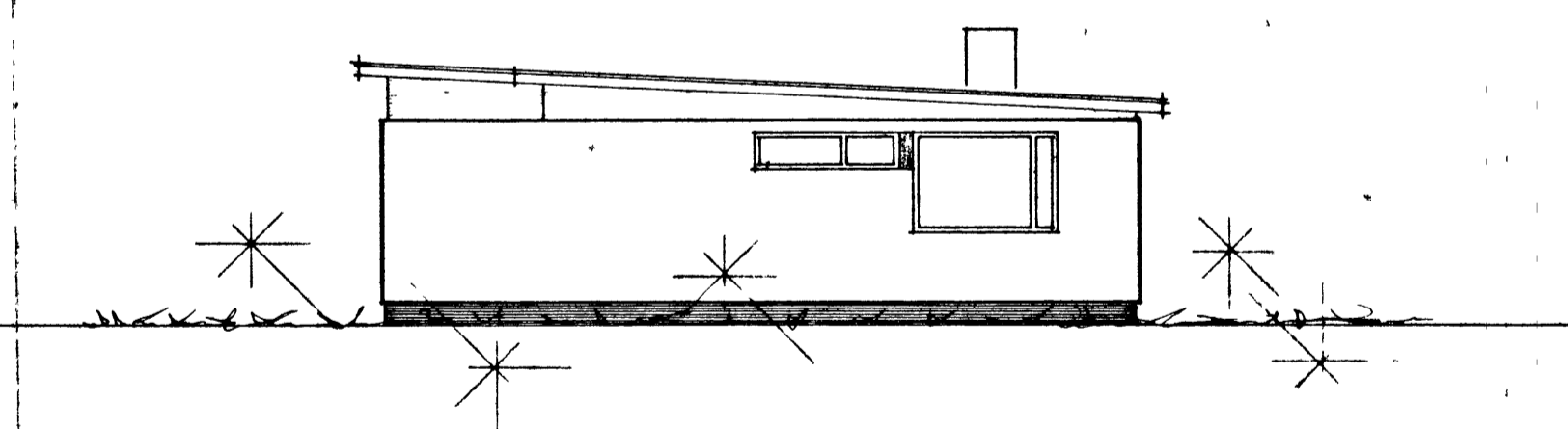
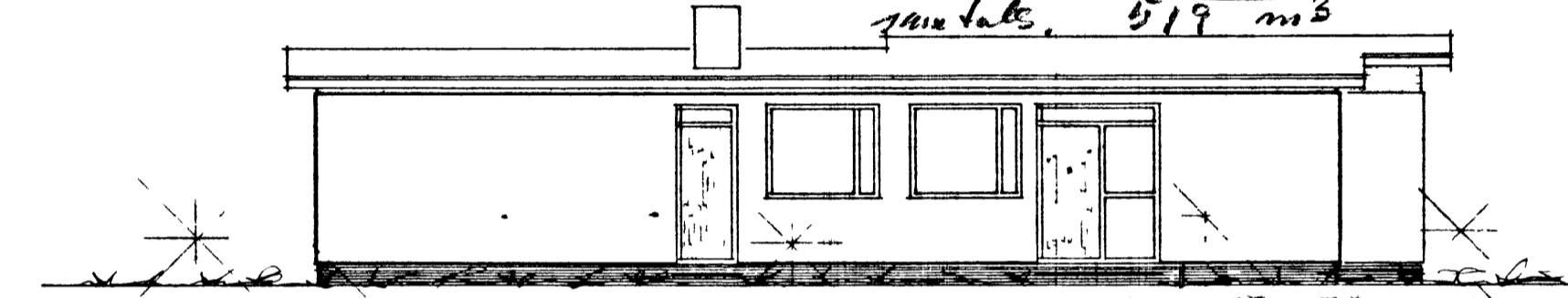
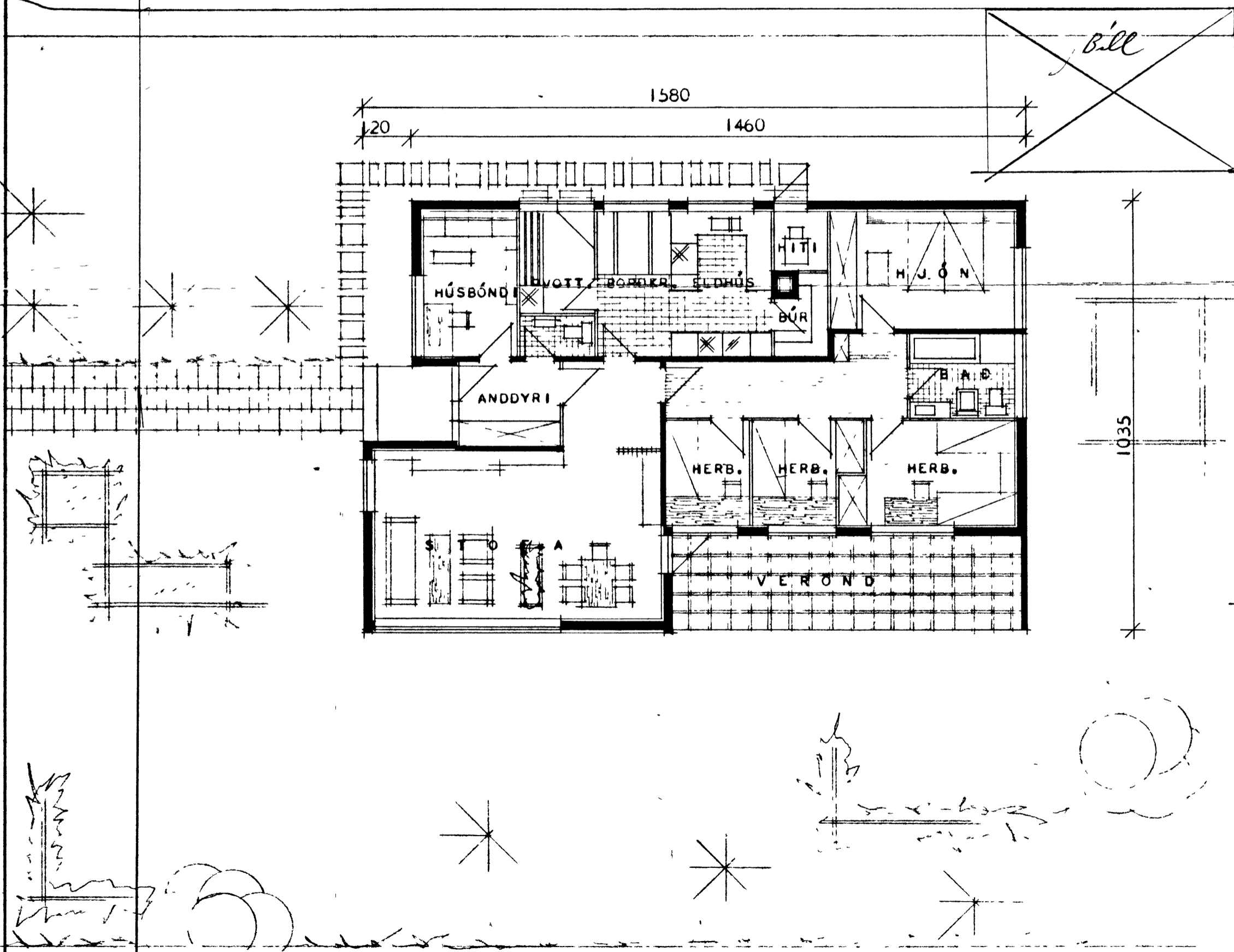
38

37-66
Náttúruvæðing
Sniður: Húsin S. Stefánssonar
Magnús Sigurðsson.



SNEIÐING

BRÚTTÓ FLATARMÁL HÚSS = 135,90 m²
NETTÓ FLATARMÁL HÚSS = 120,00 m²
Bill 29,90 m²
ATH. VEGGIR UMHVERFIS HITAKLEFA SKULU GERDIR
STEINI OG MÚRHÚÐADIR Í HÓLF OG GÓLF.
Rúmmál 449 m³
Bill 70 m³
gættals. 519 m³



HÚSNÆÐISMÁLASTOFNUN RÍKISINS	
GRUNNMYND, ÚTLIT OG SNEIÐING	EINBYLIÐSHÚS
MÁL 1:100	VERK
	83
	BLAÐ NR 1
	FEBR. 1966