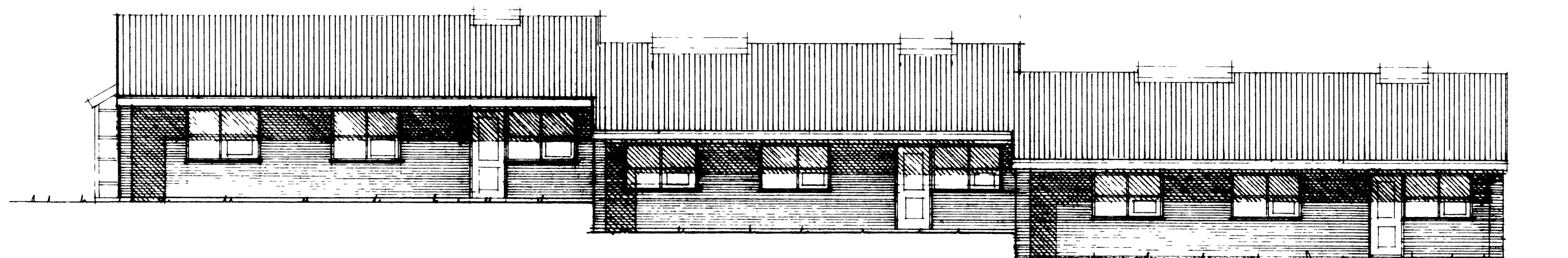
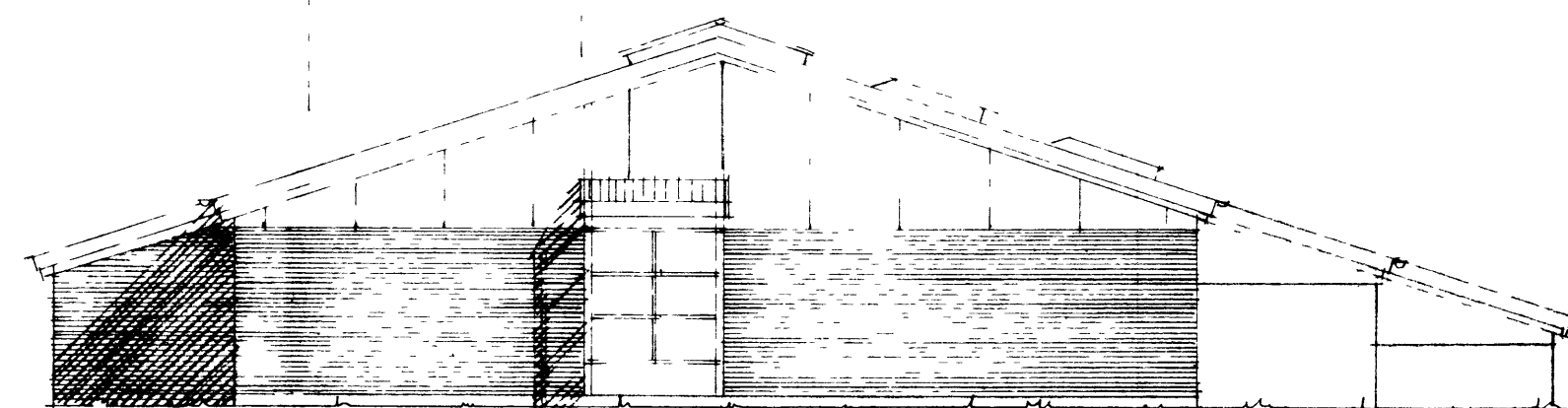


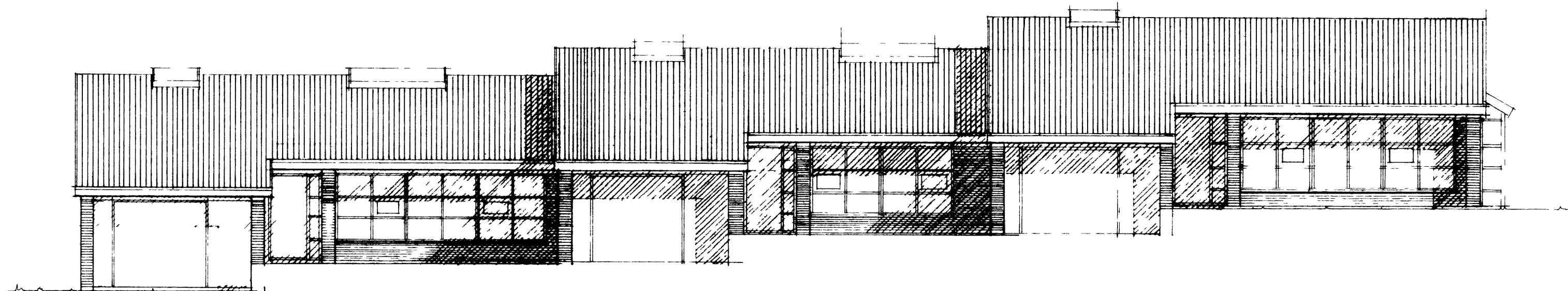
*Flyts B*



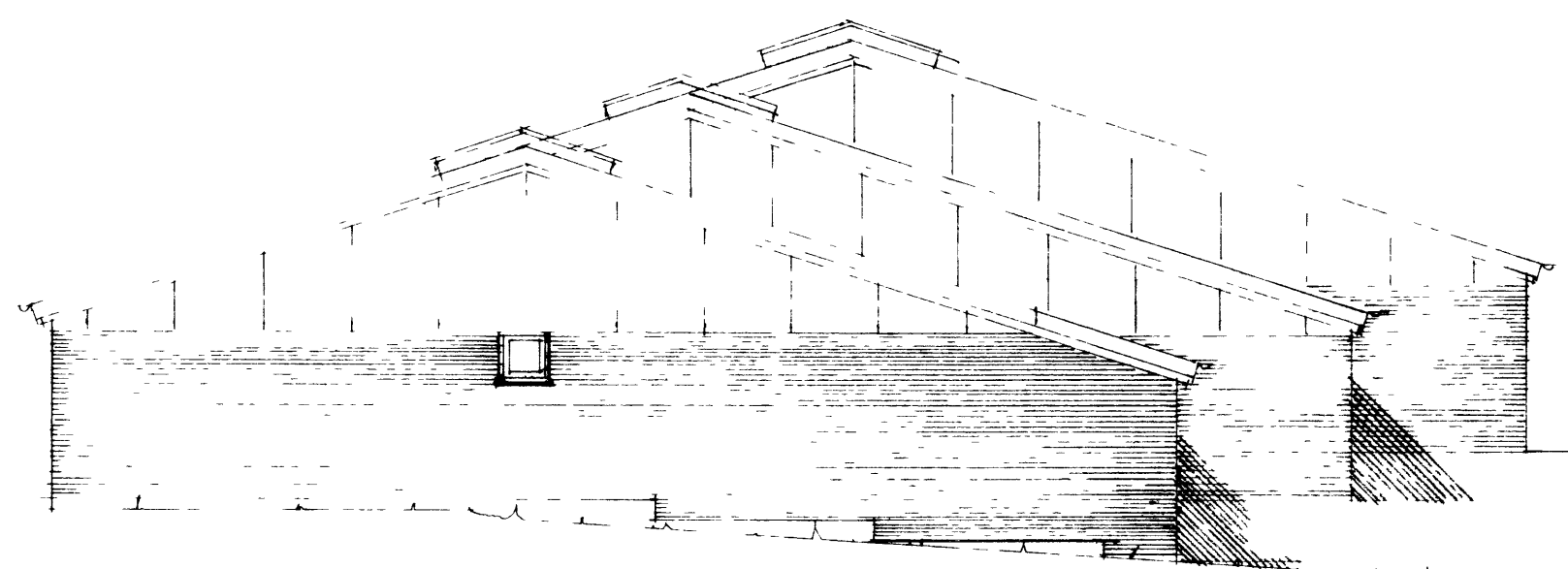
AUSTURHLID



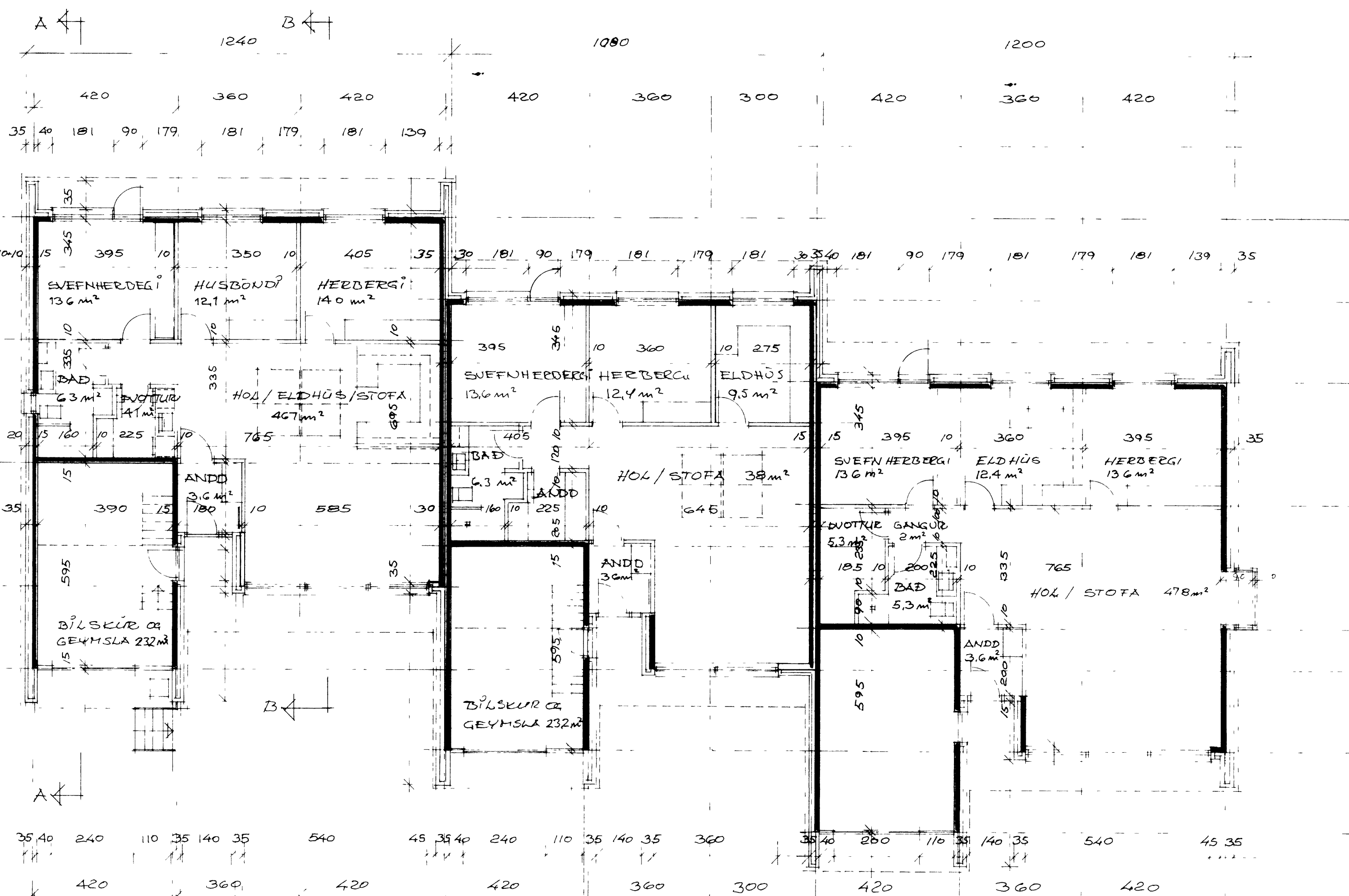
SUDURHLID



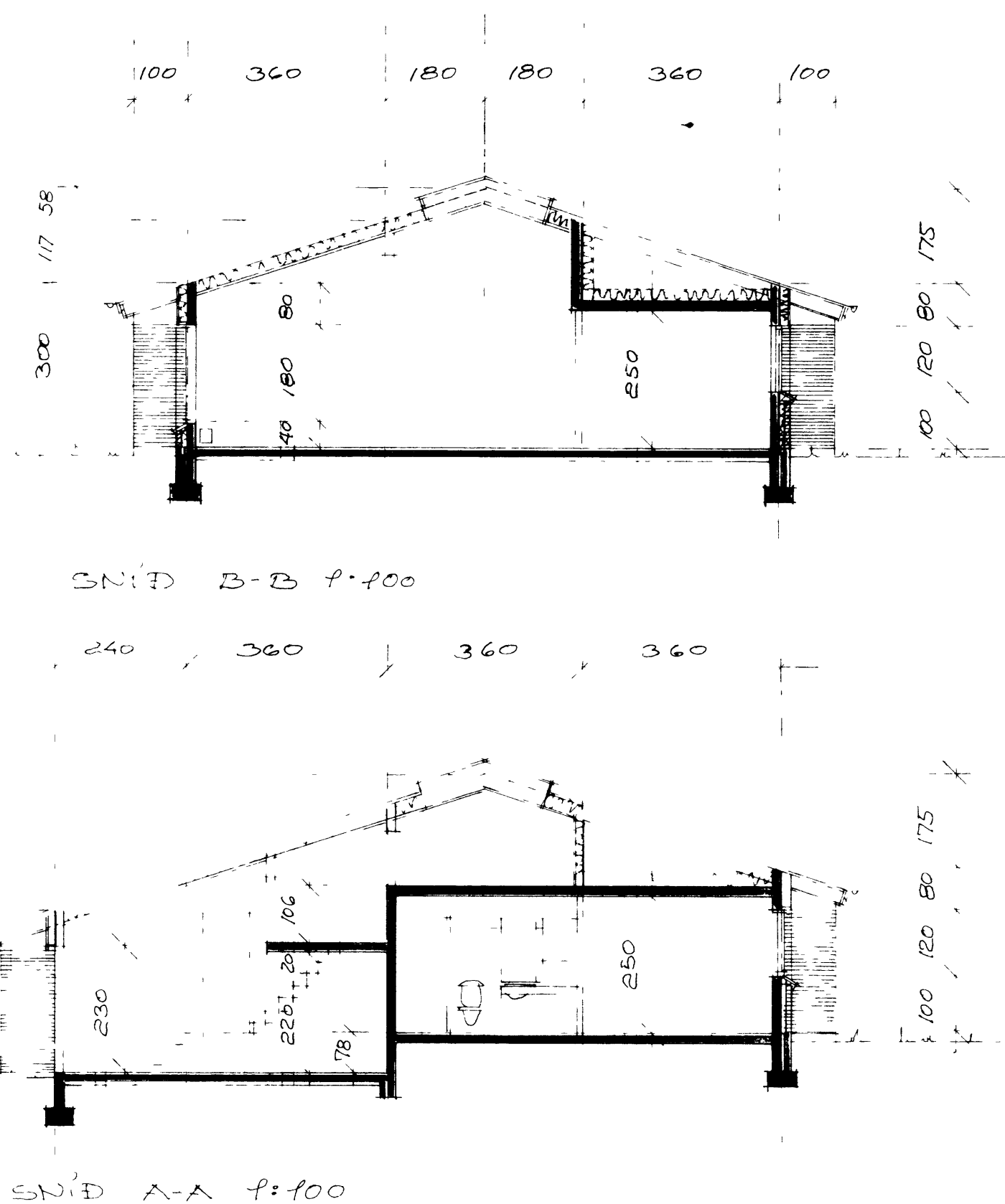
VESTURHLID



NORDURHLID



GRUNNMYND 1:100



SKYRINGAR

UNDIRSTÖÐUR OG PLATA Á JÖRÐU  
JÄRNÞENT STEINSTEYPA EINANGRADIR MED 2" STEINULLAREINANGRUN

UTVEGGIR  
15 CM JÄRNÞENT STEINSTEYPA EINANGRADIR MED 10 CM ÞÉTTULLAR-EINANGRUN KLÆDDIR AD UTAN MED 10 CM MURSTEINI UPPI 22C CM DAR FYRIR OFAN VERÐA VEGGIR KLÆDDIR MED STENIÞLOTUM

ÞAK  
2X9" SPERRUR c/c 60 CM AD HLUTA SJÄLFBERANDI OG HLUTA UPPSTÖLAD A JÄRNÞENTA OG STEINSTEYPTA ÞLOTJ EINANGRAD MED 20 CM LÉTTULL HALLANDI ÞÖK KLÆDD MED GÍFSI I BILSKUR OG GEYMSLUM EN 22MM PANIL I STOFU

STÆRDIR I M2

Íbúð	Íbúð nettó	Bilskur nettó	Heild nettó	brúttó	
1	102.8	23.2	126	145.4	
2	90	23.2	113.2	129.7	
3	103.7	23.2	126.9	146.6	
HEILD		286.5	69.6	366.1	421.7

HEIÐIÐ ER TIL 20. SEPTEMBER 1994  
GRUNNMYND SÖÐUR OG UTILIT MÁL 1:100 MÁÍ 1994  
ÞALL 2. HÖFUNDUR TÖKKUFIÐARLYÐJÓ UMFIRNÁMMEYJUM