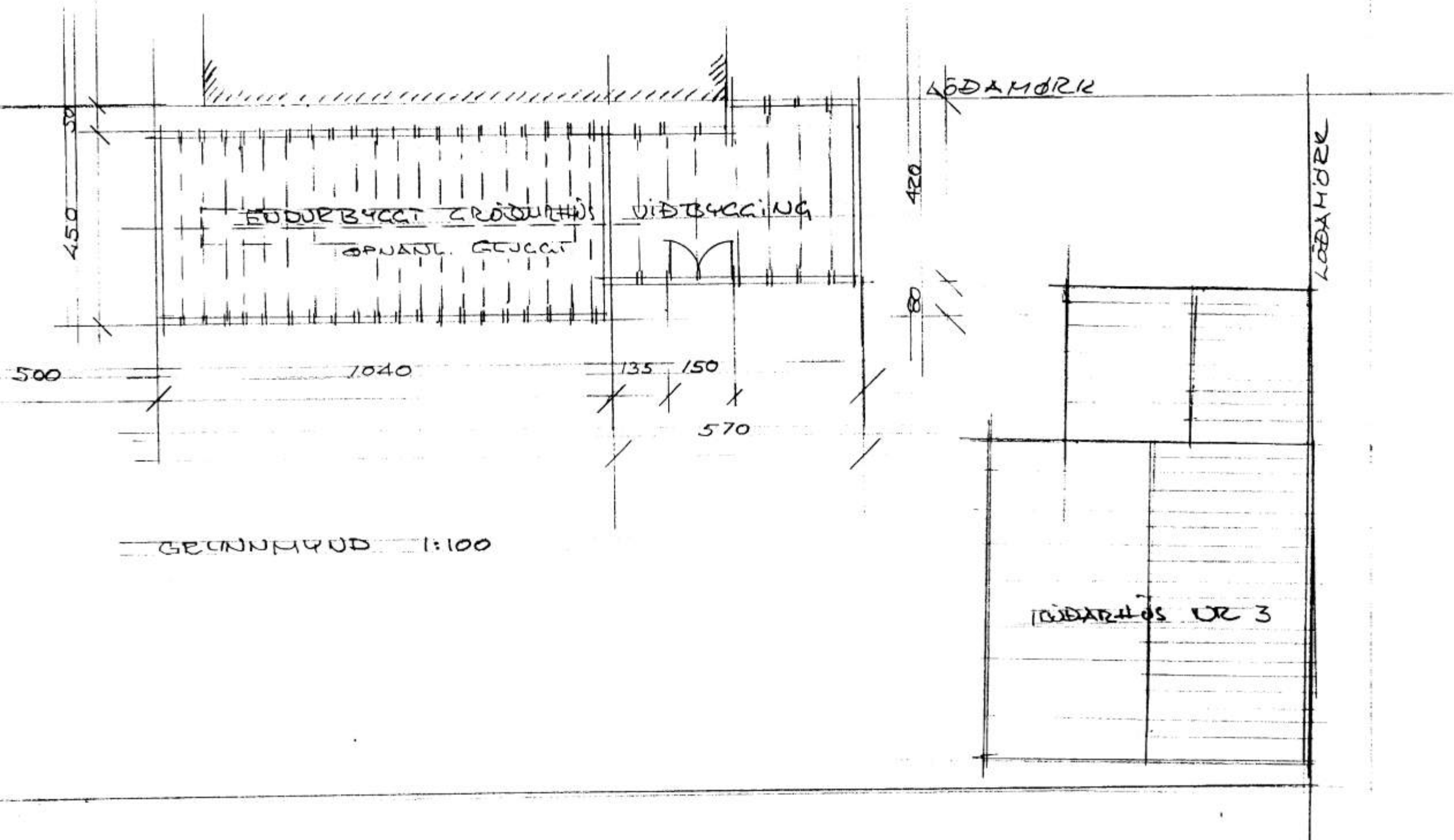
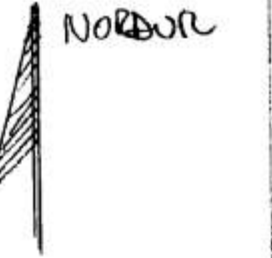
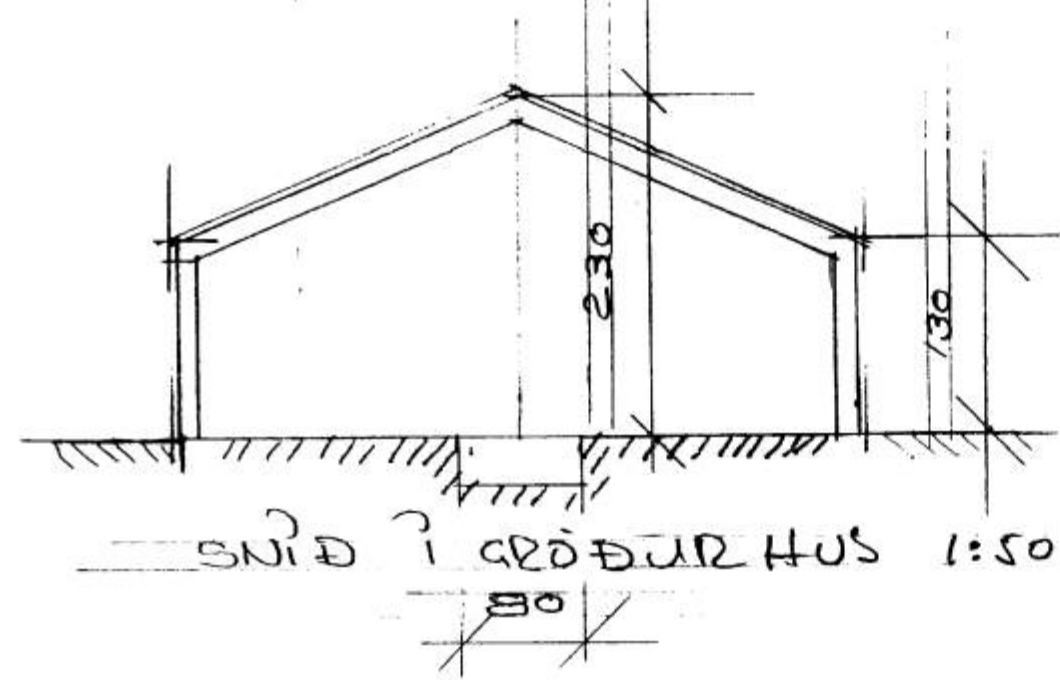
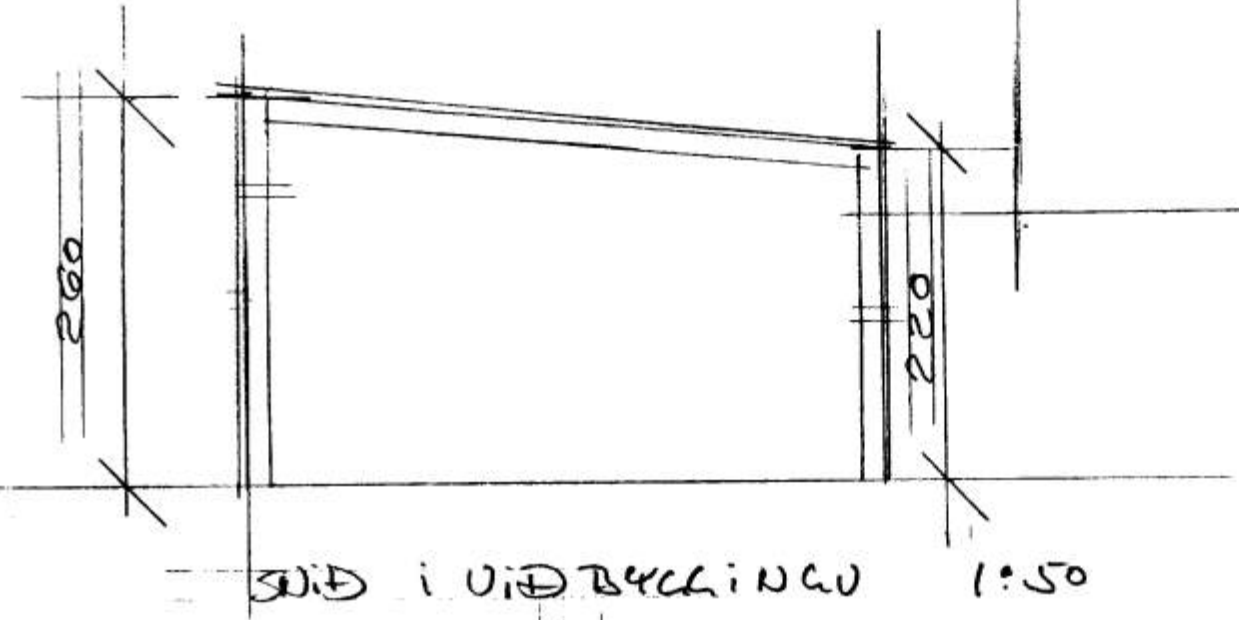


VESTURHLIÐ

SUÐURHLIÐ

AUSTURHLIÐ

NORÐURHLIÐ



SEYFINGAR

UNDIRSTÖÐUR STEYPTAR

ÚTVEGGIR 2x4" G CLR

ÞAK: 2x6" G CLR

STREÐIL: NETTÓ M² / BRÚTTÓ M² / RÚMÁL M³

GRÖÐURHUS 42.4 46.8 84.2

VIÐBYGGING 20.6 22.5 54.0

SAMTALS 63.0 69.0 138.0

AFSTÖÐURMÁL 1:500

HÁSTEINSVEGUR 3 GRÖÐURHUS

UPPMÁL =

GRUNNMÁL SNÍÐ ÚTLIT OG AFSTÖÐUMÁL

DESEMBER 2006 VERK NR OG TEKI NR 1

TEKNI-STOFA ÞZ RÁF VESTMANNÁEYDUM

