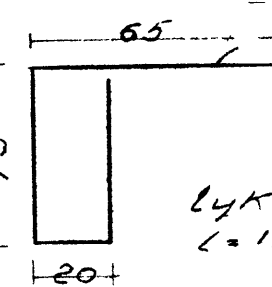
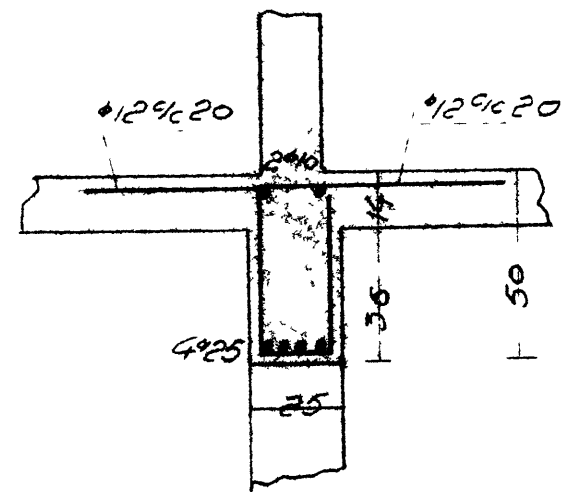
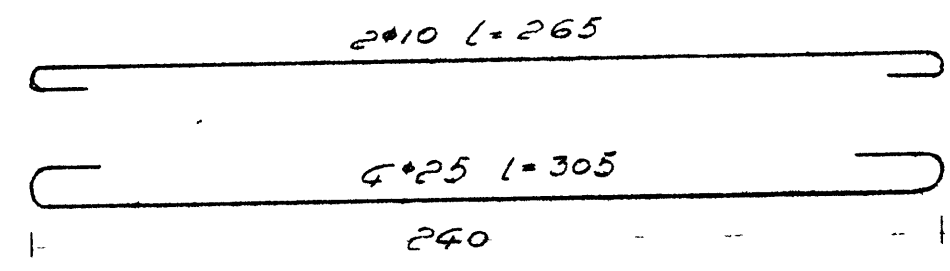
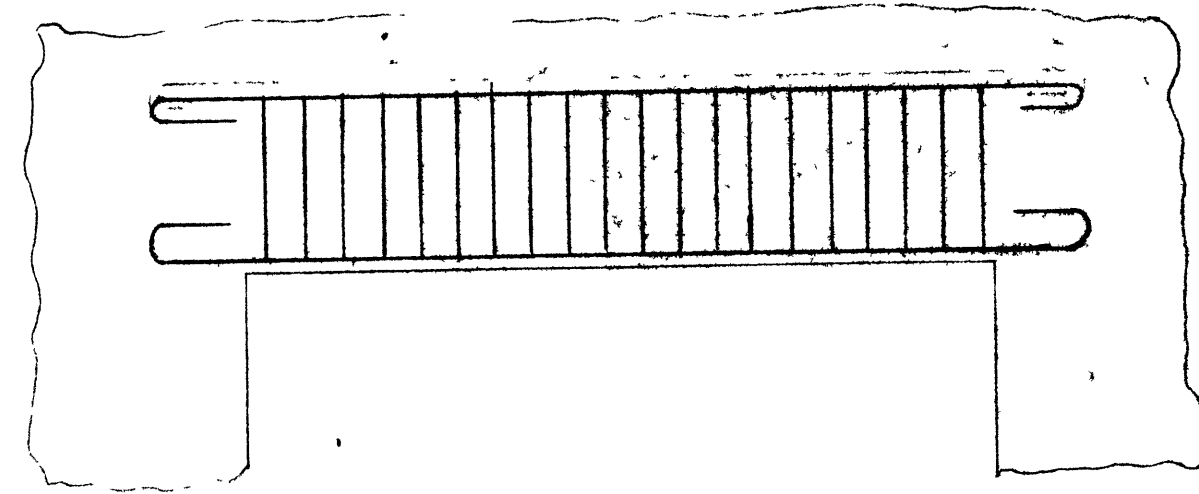
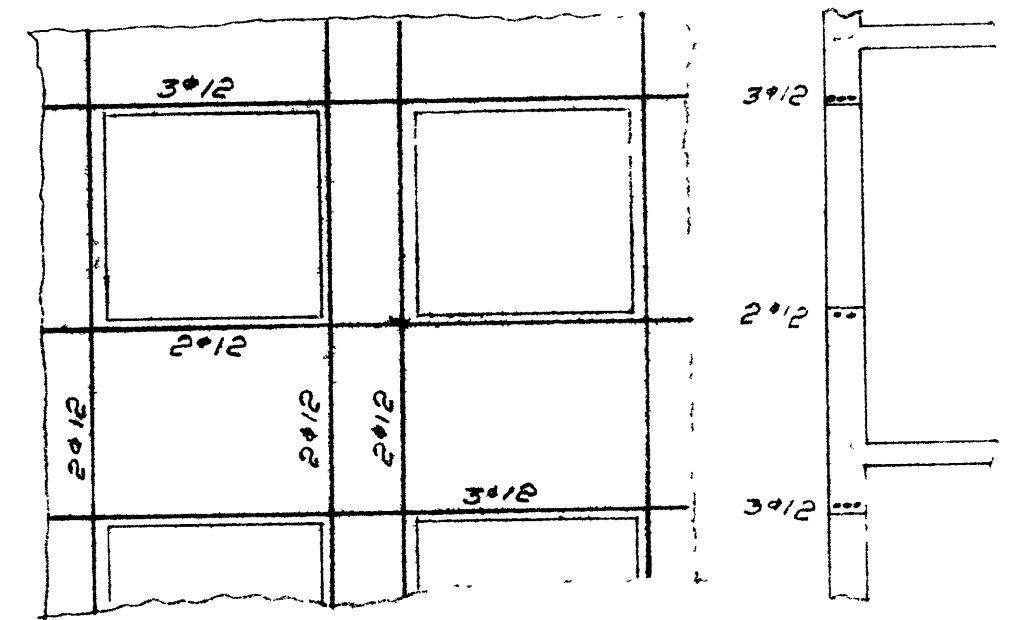


B₁₆ 1:20



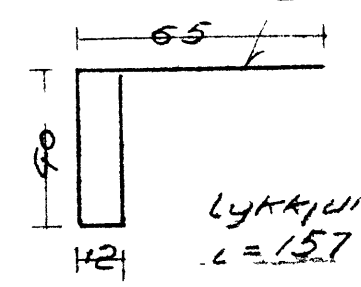
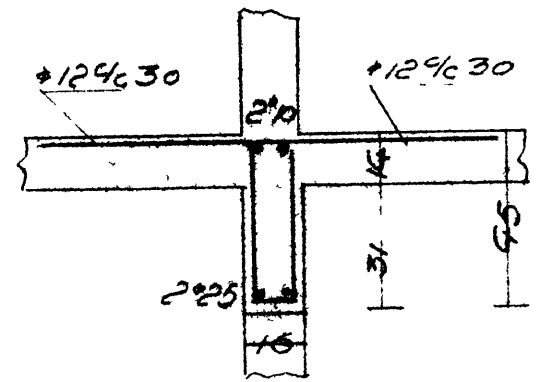
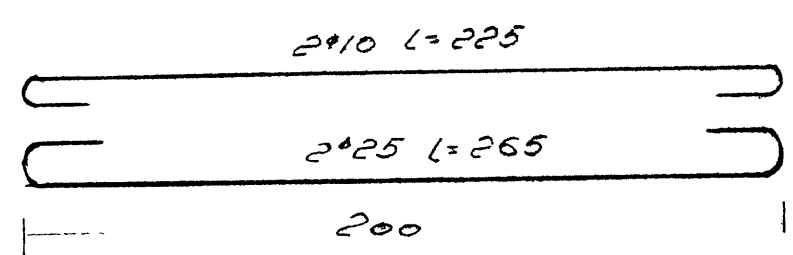
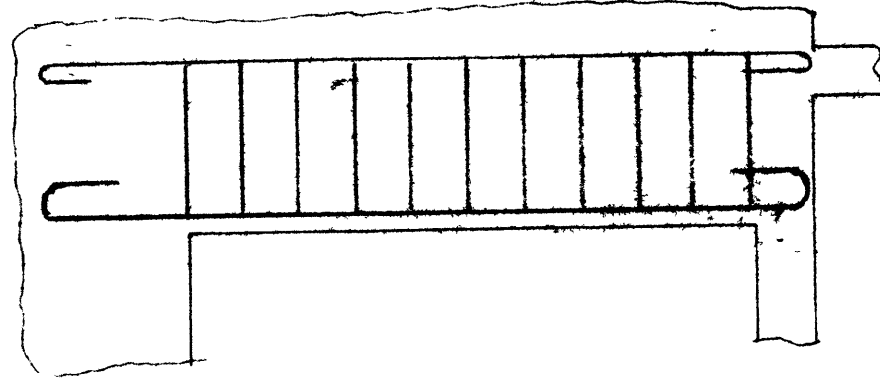
annarhver annur gangi til vinstri í efri brúni plötu og annarhver til hægri
 Lykkjur $\phi 12 \times 10$
 L=175 20 stk

Dyra og gluggaop
 1:50

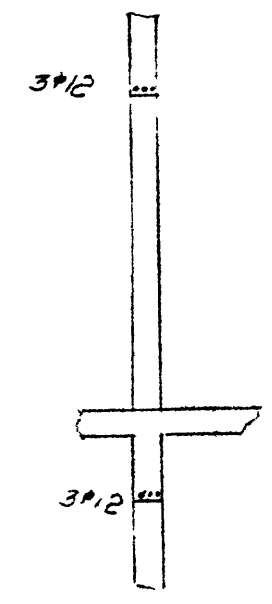
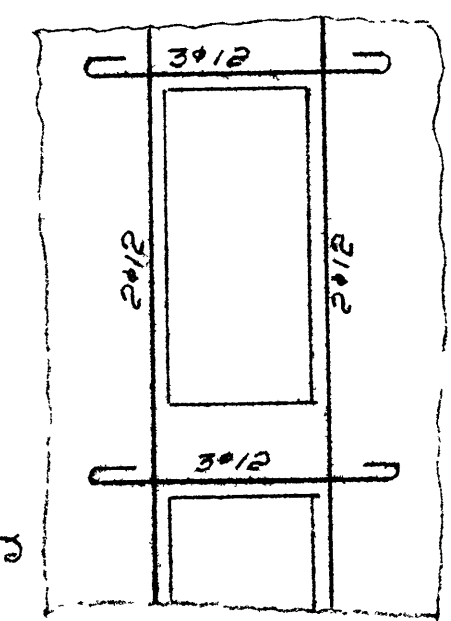


Löðrett jarn net samfeitt milli hæð
 7 samseytum vaxi eggst 12mm, allu um 50 cm

B₁₅ 1:20

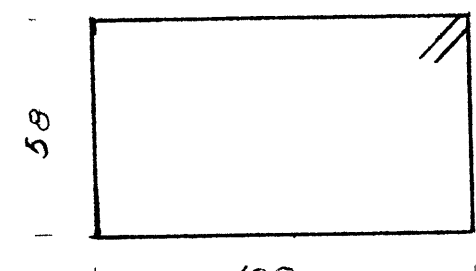
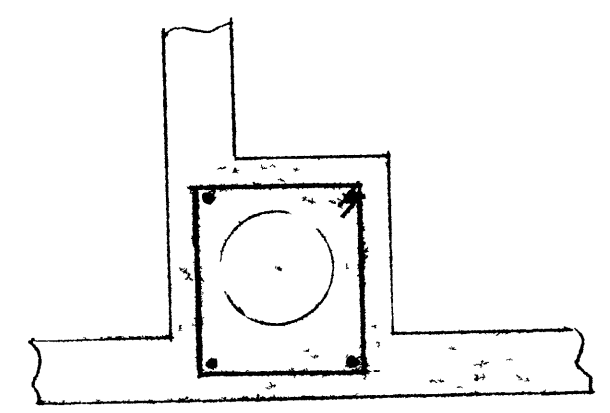
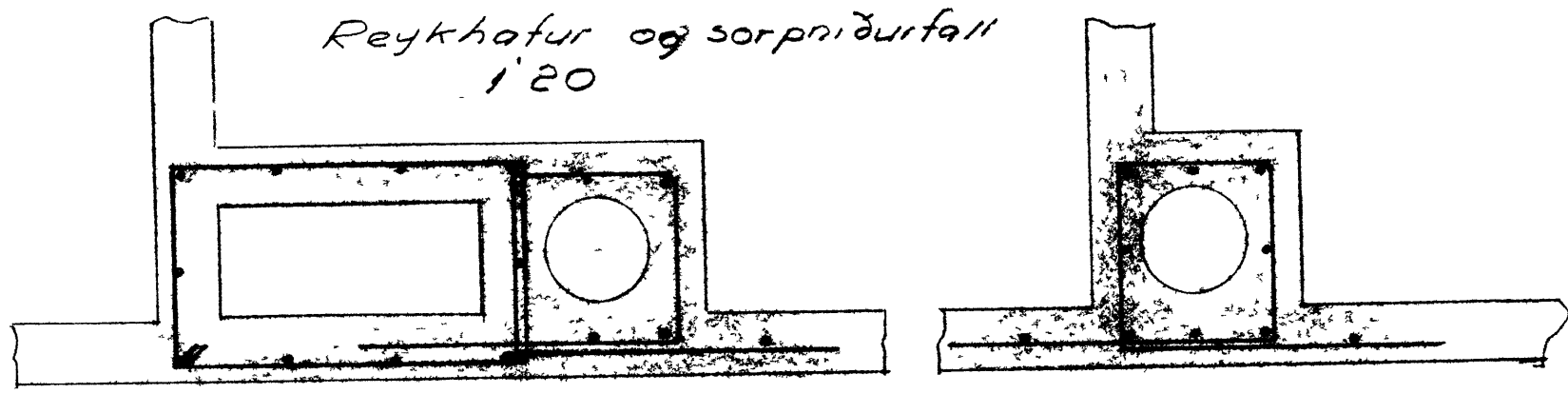


annarhver annur gangi til vinstri í efri brúni plötu og annarhver til hægri
 Lykkjur $\phi 12 \times 15$
 L=157 11 stk

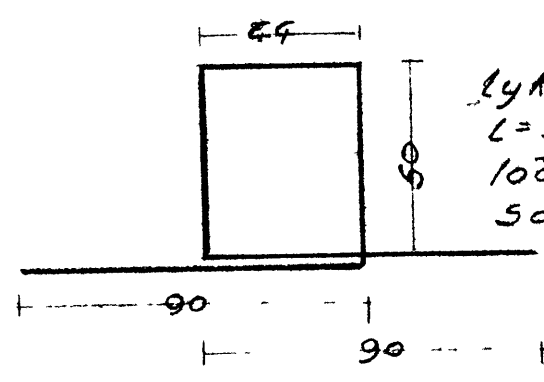


Sorpnidurföll a 1., 2., 3. og 4. hæð
 1:20

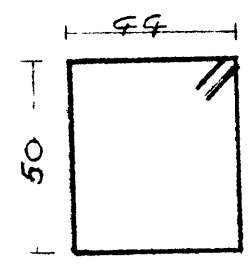
Reykhatur og sorpnidurföll
 1:20



Lykkjur $\phi 10 \times 20$ L=325
 Löðrett 10*12



Lykkjur $\phi 12 \times 20$
 L=324 5 stk pr nidurföll
 Löðrett 10*10
 Sorpnidurföll jarnbindist þannig í Kjallara



Lykkjur $\phi 10 \times 25$
 L=200
 Löðrett 4*10

Hástensvegur 63 17 64

Jarnbent steinstærta
 Reykjavík 24 3 1964
 Sigurhj. Pálmarsson, Verkt.

Reykhatu jarnbindist þannig á öllum hæðum
 Um að reykhatu að öðru leyti vísað til teckn. af hitalögn