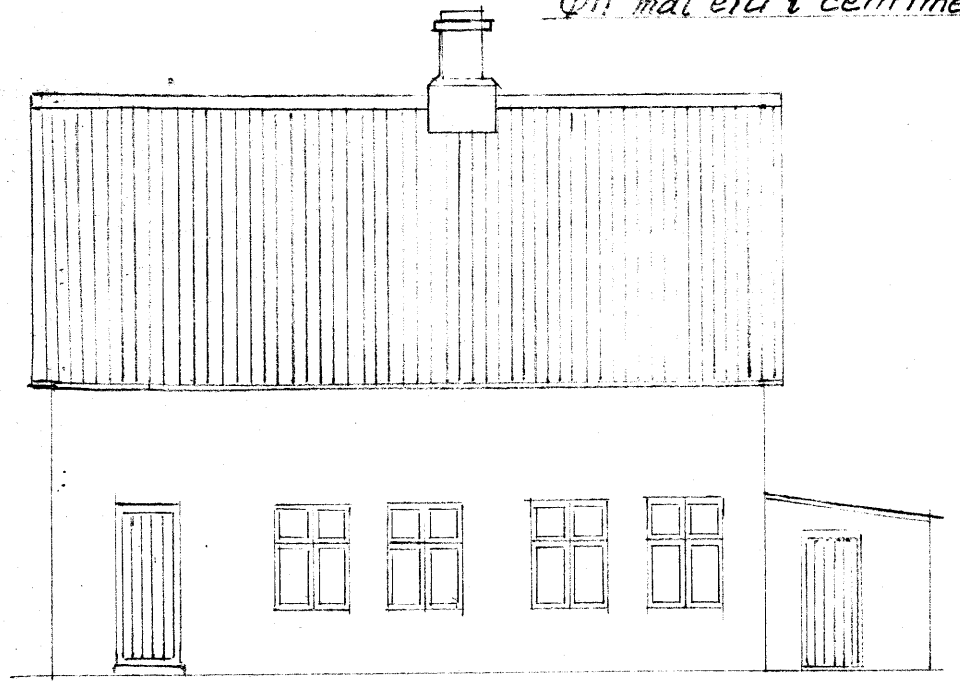


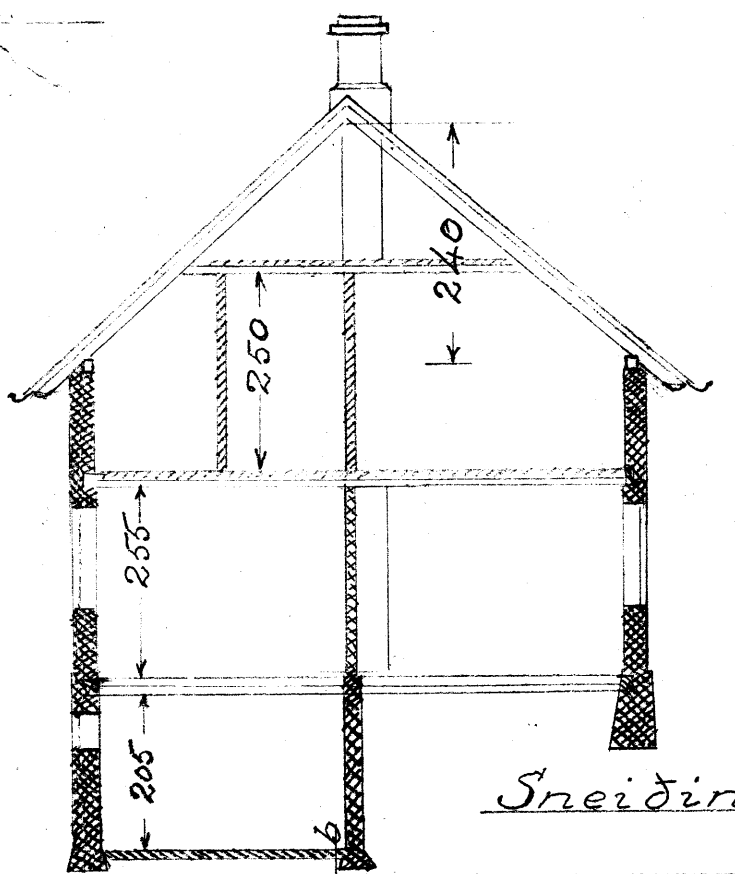
Húsið við Hásteinsveg 36.

MK. 1:100

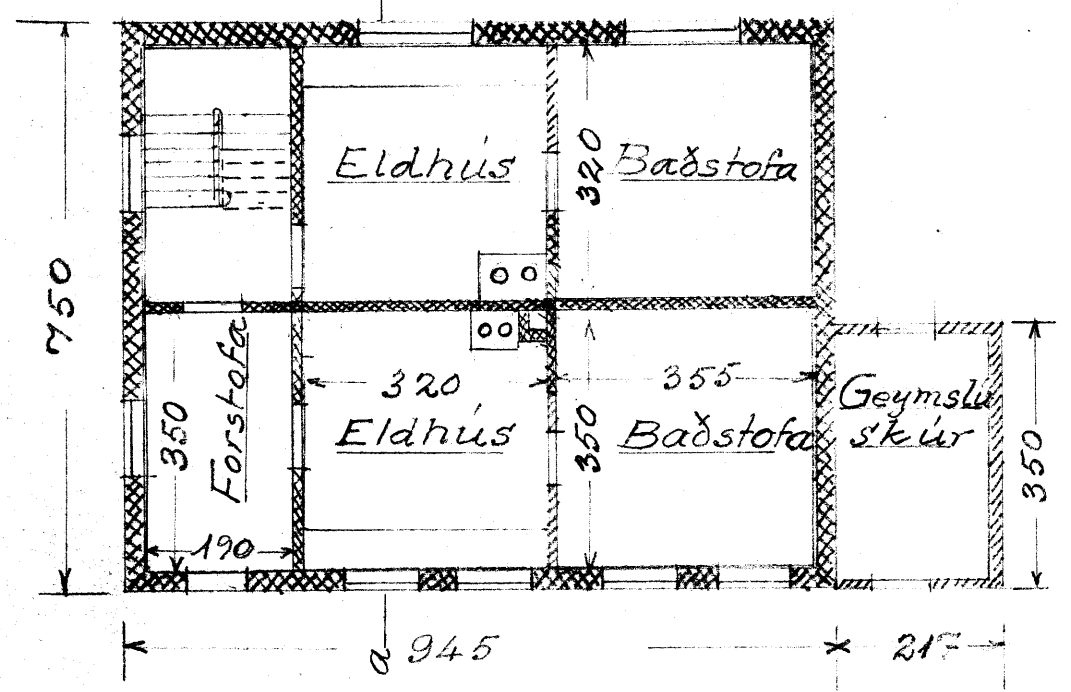
Öll mál eru í centimetrum.



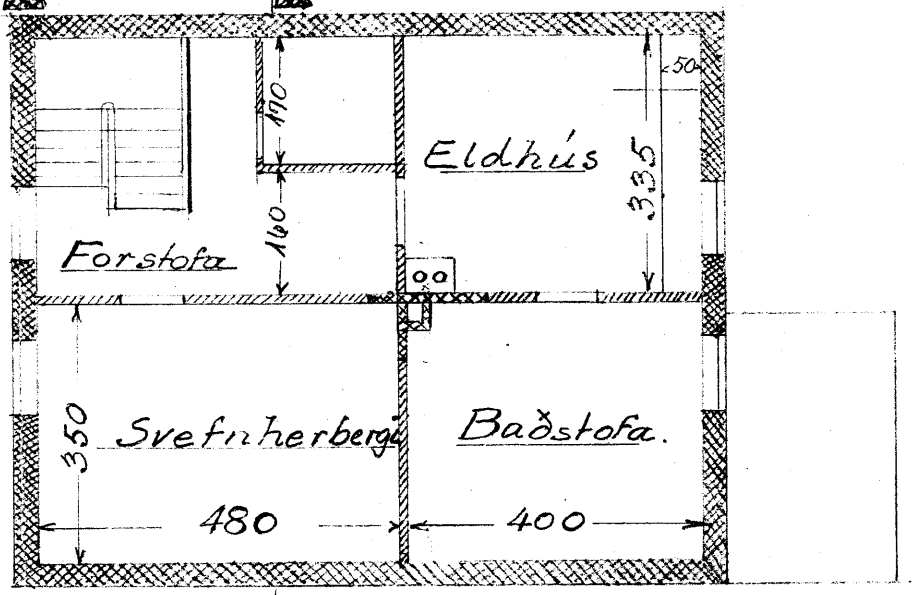
Súðurhlíð.



Sneiðing a-b.



Stofurhlíð.



Dorðhlíð.

Brunnur er undir allri forstofunni.

Neska. 10/6. 1932. 10/6. 1932
 10/6. 1932-19/6. 10/6.
 10/6. 1932 19/6. 10/6.
 Vestmannaeyjum 10/6. 32
 Sveinbj. Gíslason.