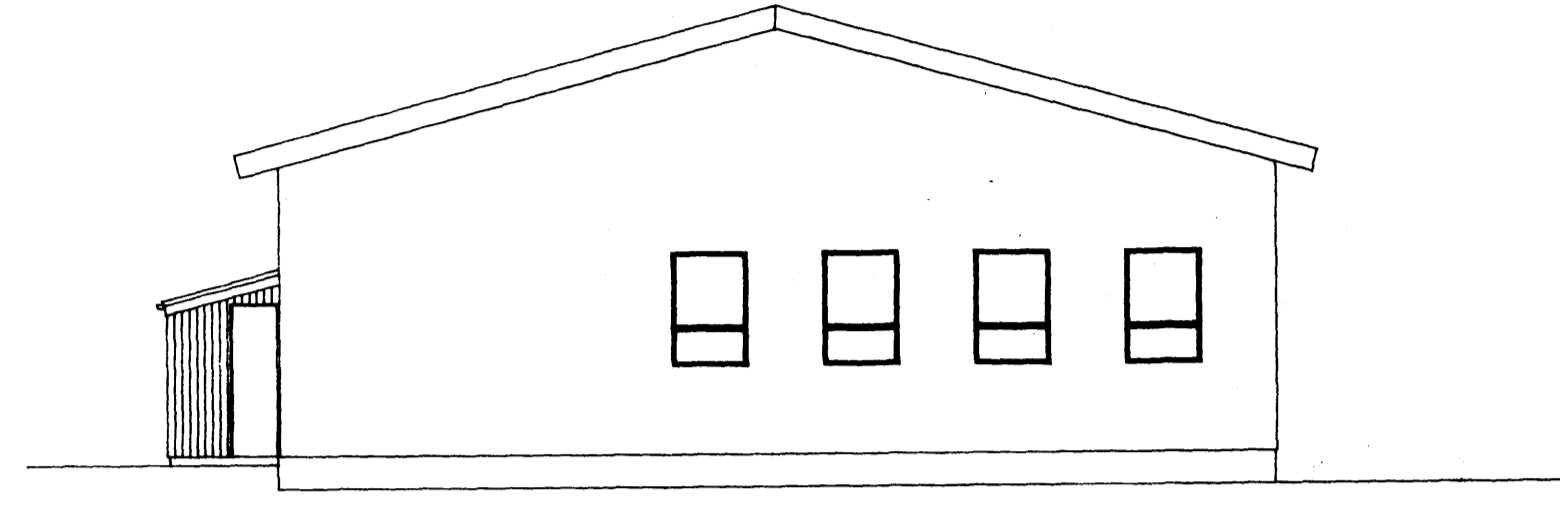
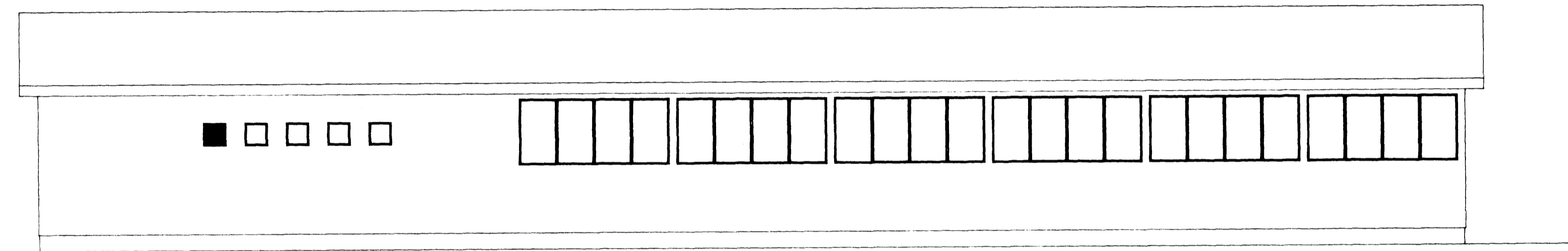


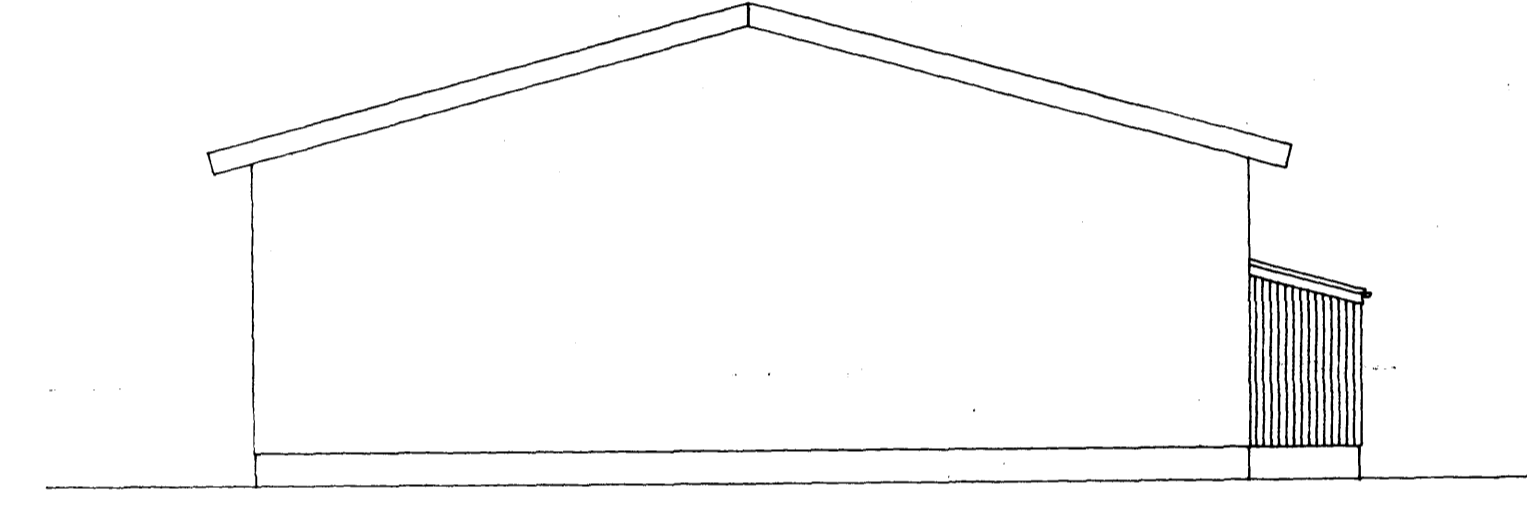
NORÐUR



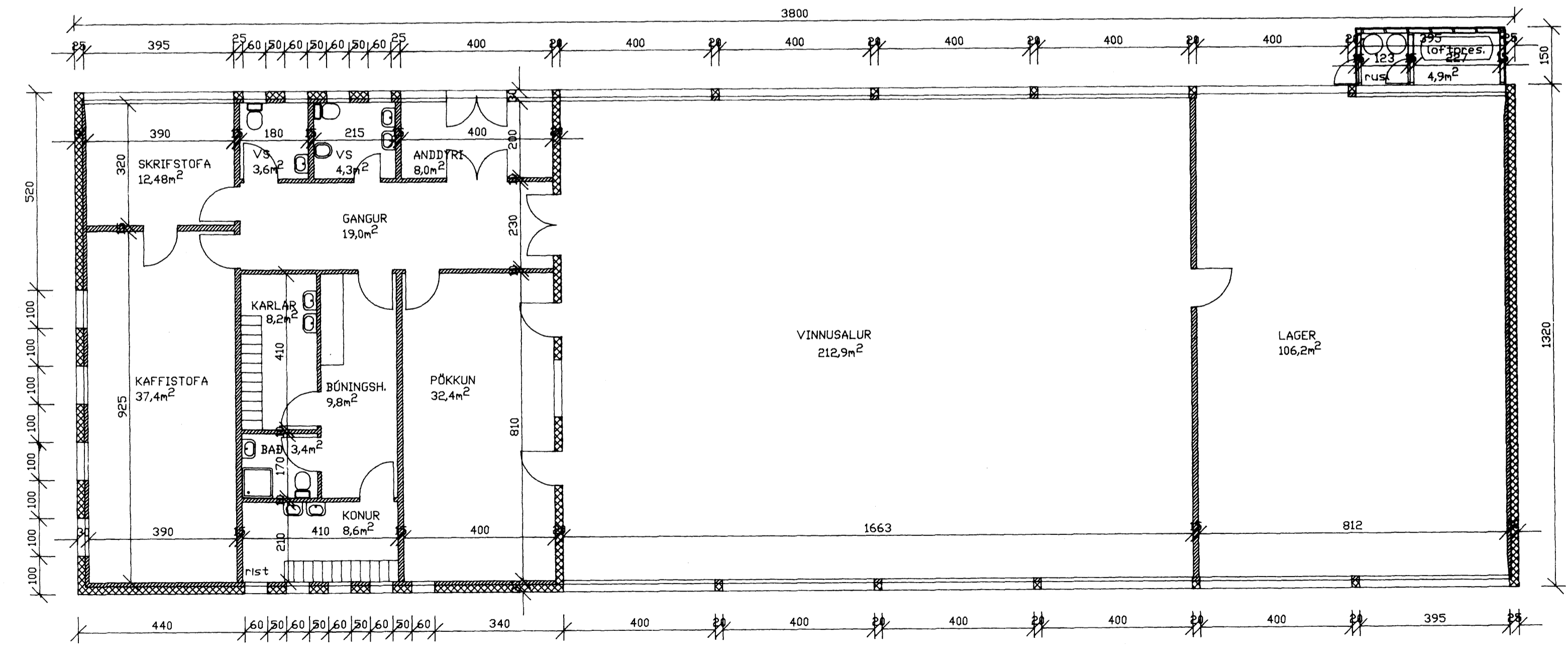
VESTUR



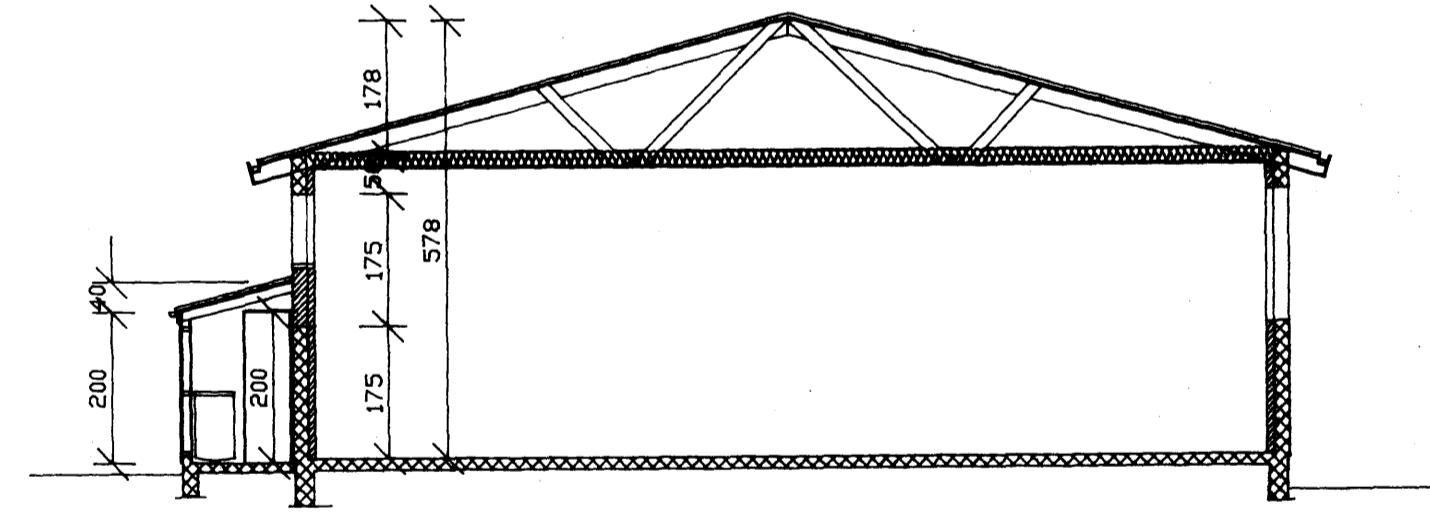
SUÐUR



AUSTUR



GRUNNMYND



SNID

SKÝRINGAR.

NÚVERANDI HÚS	501,6m <sup>2</sup>	2407,0m <sup>3</sup>
VIÐBYGGING SKÜR	5,9m <sup>2</sup>	13,0m <sup>3</sup>
SAMTALS	507,5m <sup>2</sup>	2420,0m <sup>3</sup>

NÁNARI SKÝRINGAR VEGNA VIÐBYGGINGAR  
 SJÁ TEIKNINGAR NR. 10 OG 11

breyting A	B	C	D	E	verkefni VERNDADUR VINNUSADUR VESTM.EYJUM	PÁLL ZÓPHÓNÍASSON TEIKNISTOFA	verk nr. 8230	dags. nóv. 90
málkv. 1:100	tekn. EA	hannað PZ			verkefni VIÐBYGGING. GEYMSLUHÖL	ÞÁRÞÓR JAFNVEGVEGJÓR		