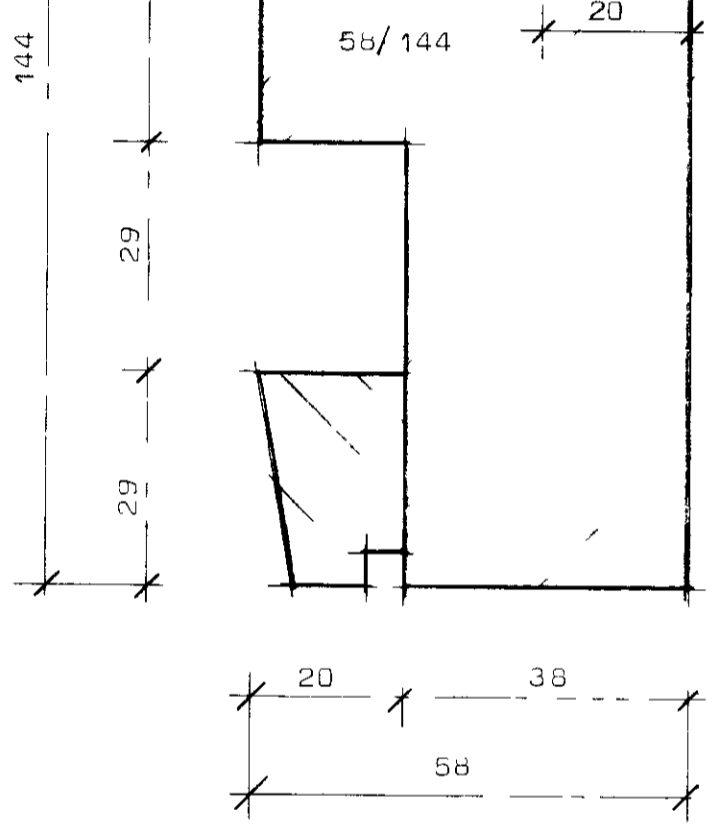
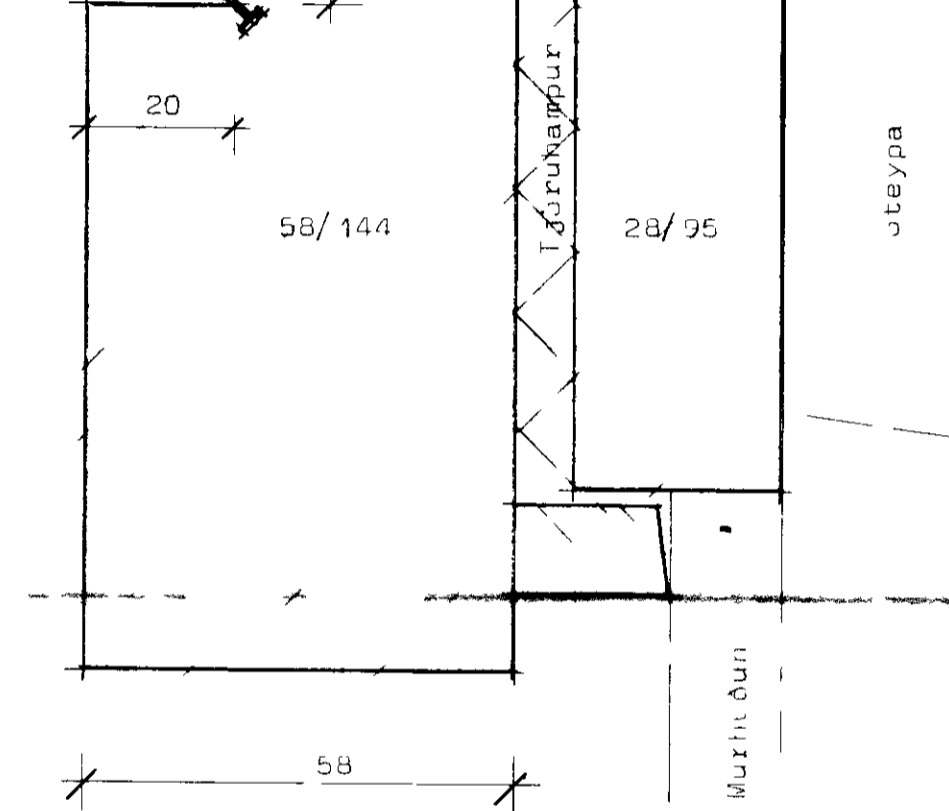
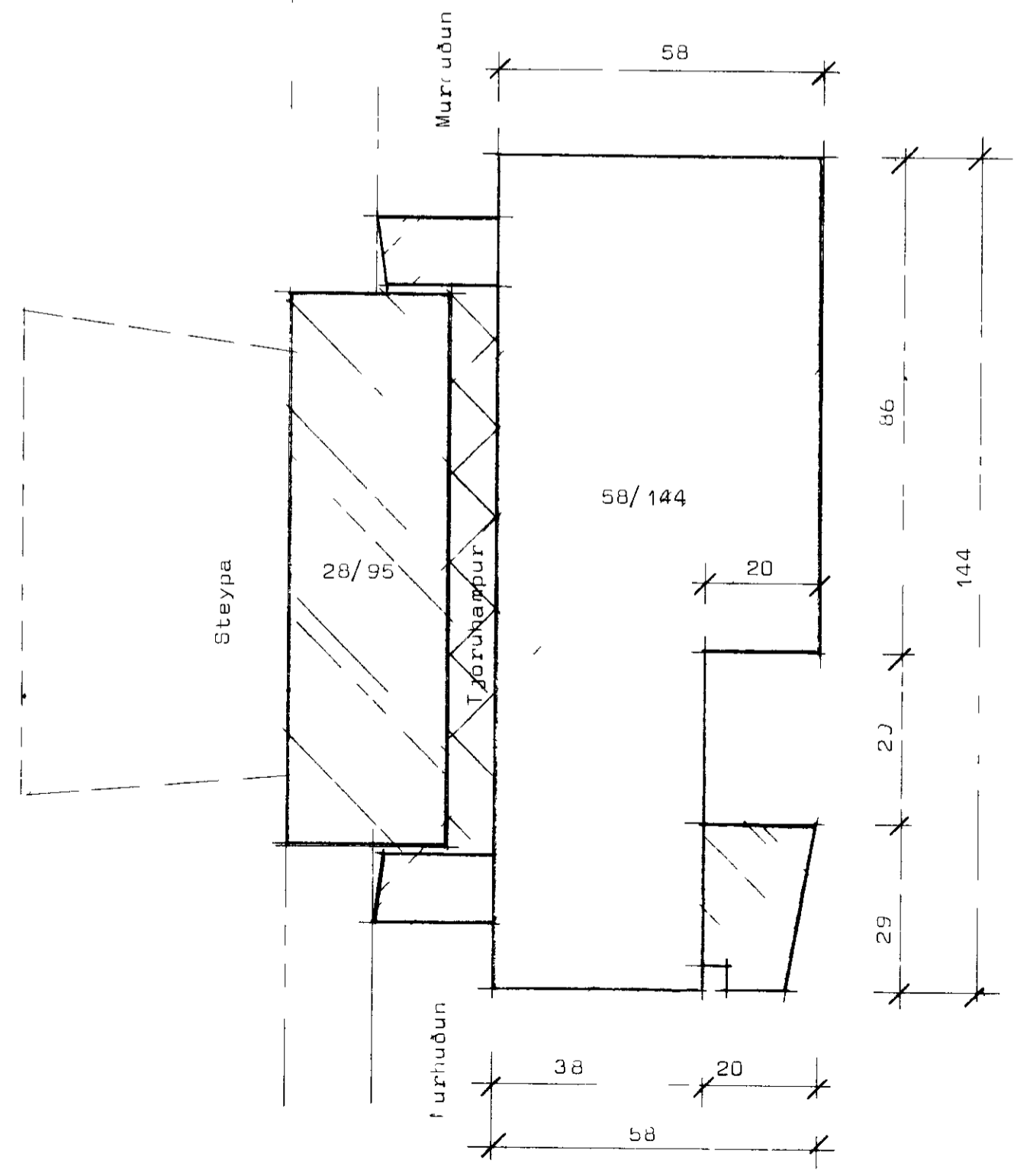


Y ri panillinn límist fyrst á blindrammann í blokkþvingum
 panillinn síðan olfuborinn að innan og hurðin einangruð
 því næst er innri panillinn límdu á



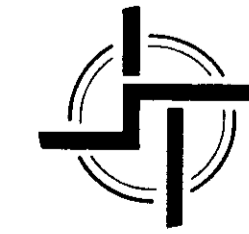
Ló réttur þóstur milli hurðar og glers



Hliðarstykki m hurð



Larettar sneiðingar



STAÐALHÚS S F

TEIKNISTOFA SUDURLANDSBRAUT 20 SIMI 83141

VERKEFNI	DAGS	1978	VERK NR
Aðalhurð	MKV	1.1	
	BR		
Larettar sneiðingar gerð H	BLAD NR		

Handwritten signatures and notes at the bottom of the page.