

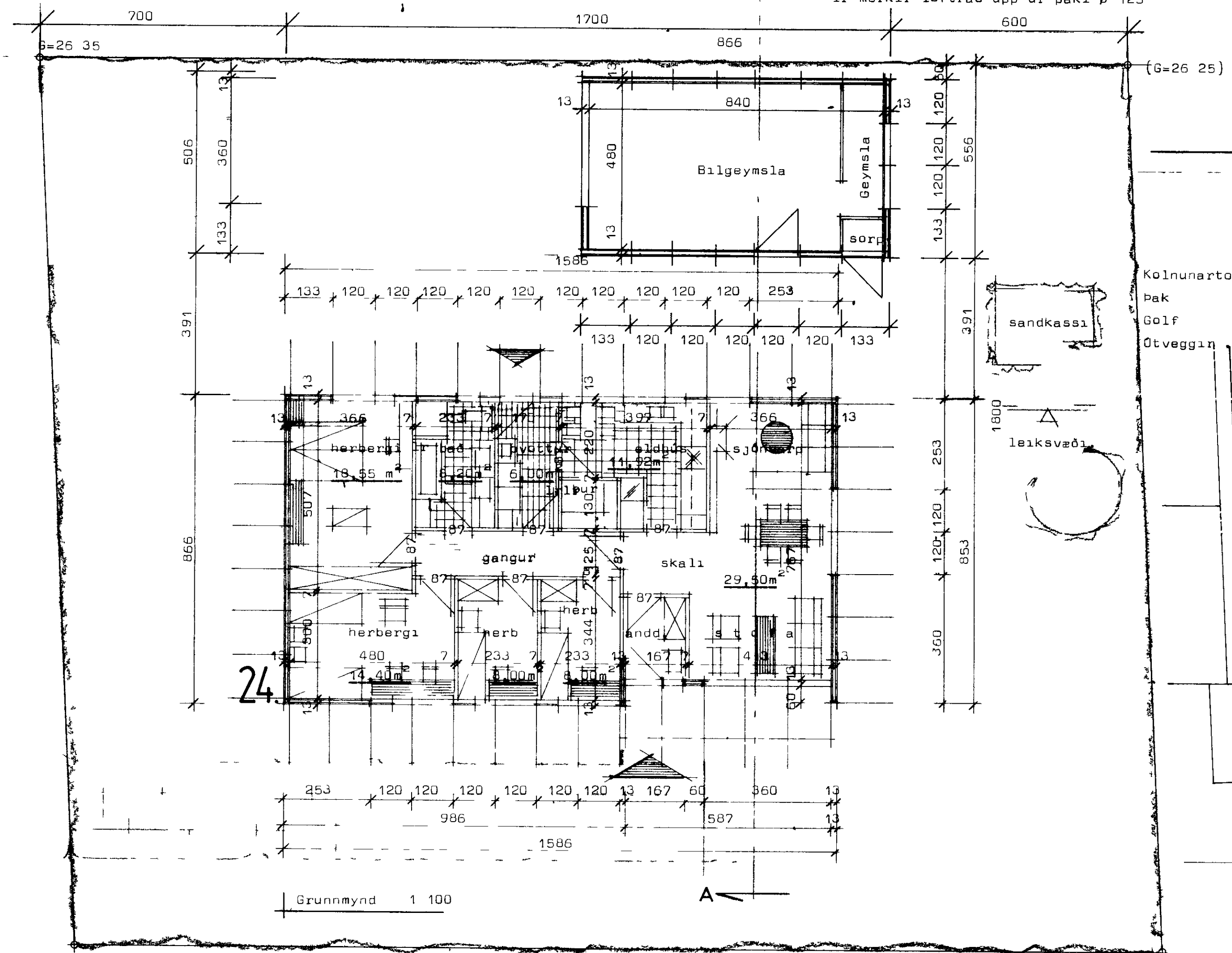
BÚHAMAR 24

1528

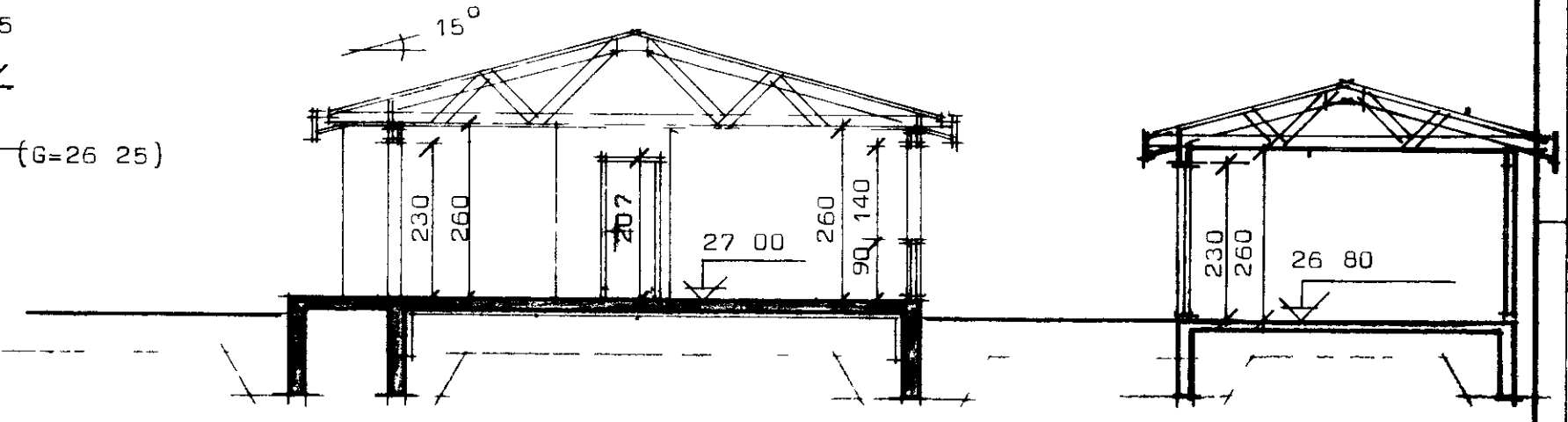
30-10 29
Sallur Brogerinn

- Flatarmal huss = 133 74m²
- Flatarmal huss nettó = 122 00m²
- Flatarmal bilgeymslu =
- Heildarflatarmal =
- Rummal huss = 458 00 m³
- Rummal bilgeymslu =
- Heildarrummal =
- Nytingarhlutfall =
- 1r merkir loftras upp ur þaki \varnothing 125

A

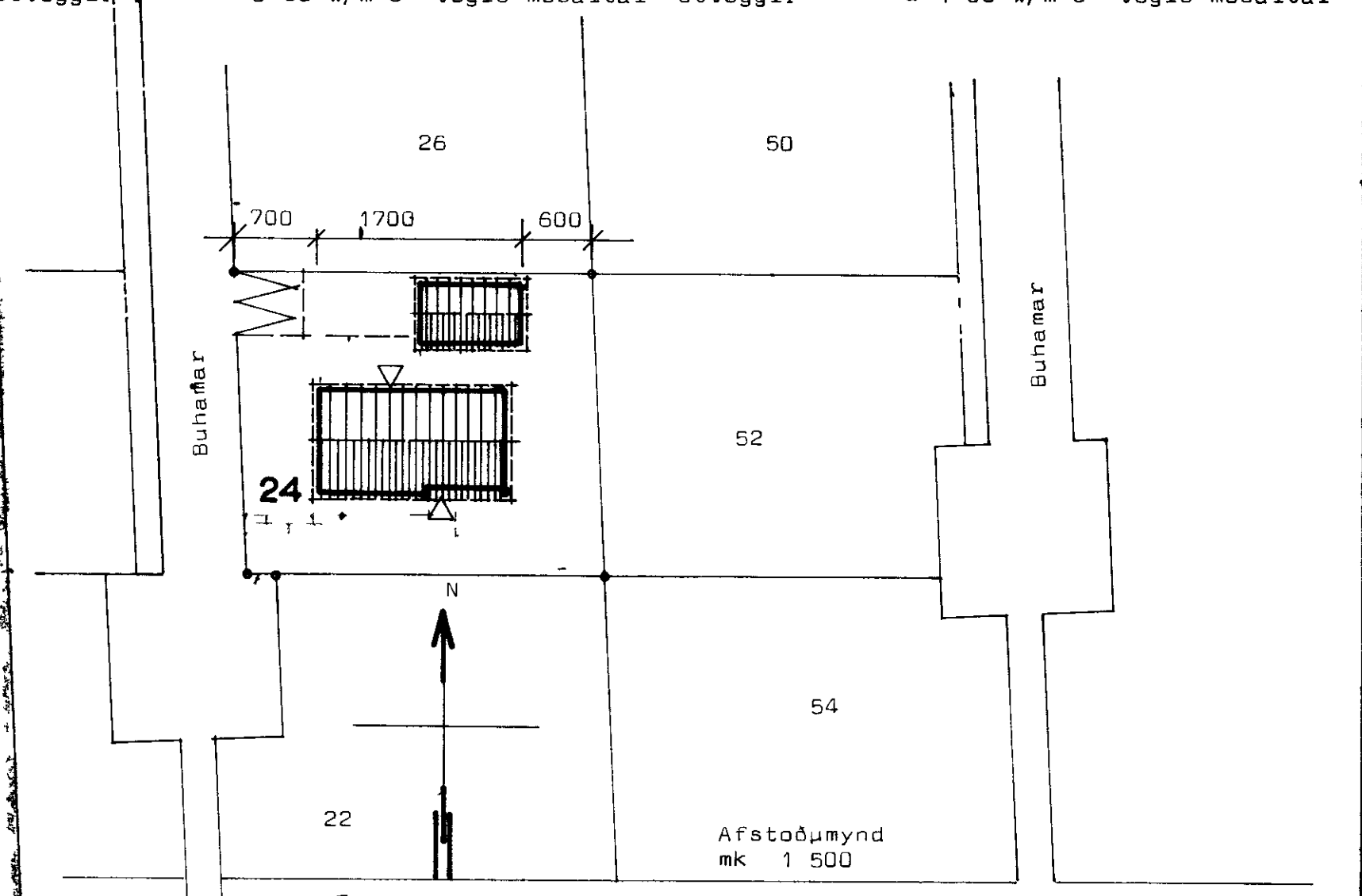


Grunnmynd 1 100



Sneiðing í hus A-A

Kólnunartölur K a hitaveituvæði	Kólnunartölur K utan hitaveituvæða
Þak = 0 30 w/m ² C ⁰	Þak = 0 20 w/m ² C ⁰
Golf = 0 40 w/m ² C ⁰	Golf = 0 30 w/m ² C ⁰
Útveggir = 0 80 w/m ² C ⁰ vegið meðaltal	Útveggir = 1 00 w/m ² C ⁰ vegið meðaltal



G=26 98

G=26 85

STADALHÚS S F
TEIKNISTOFA SIÐUMULA 31 SIMI 83141

VERKEFNI Grunnmynd	DAGS 1979	VERK NR ST 141
BÚHAMAR 24	MKV 1 100	
	BR	
	BLAD NR 1 01	