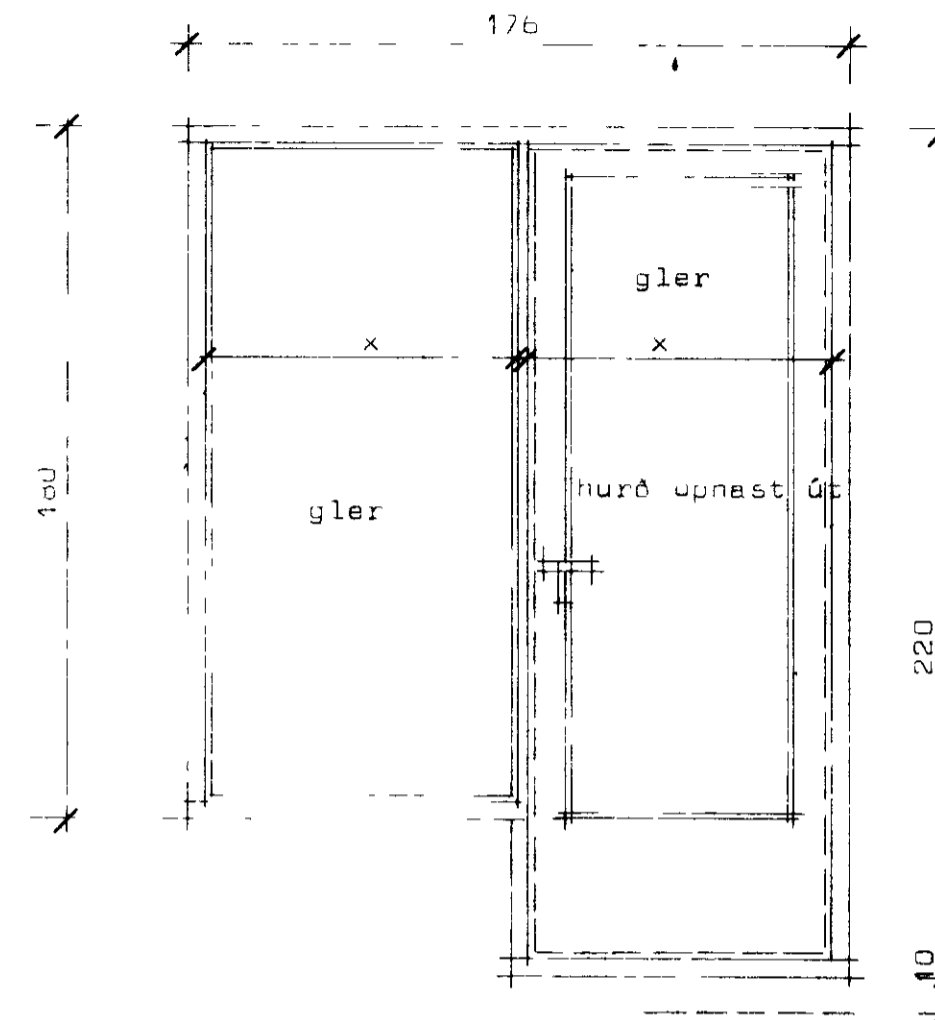
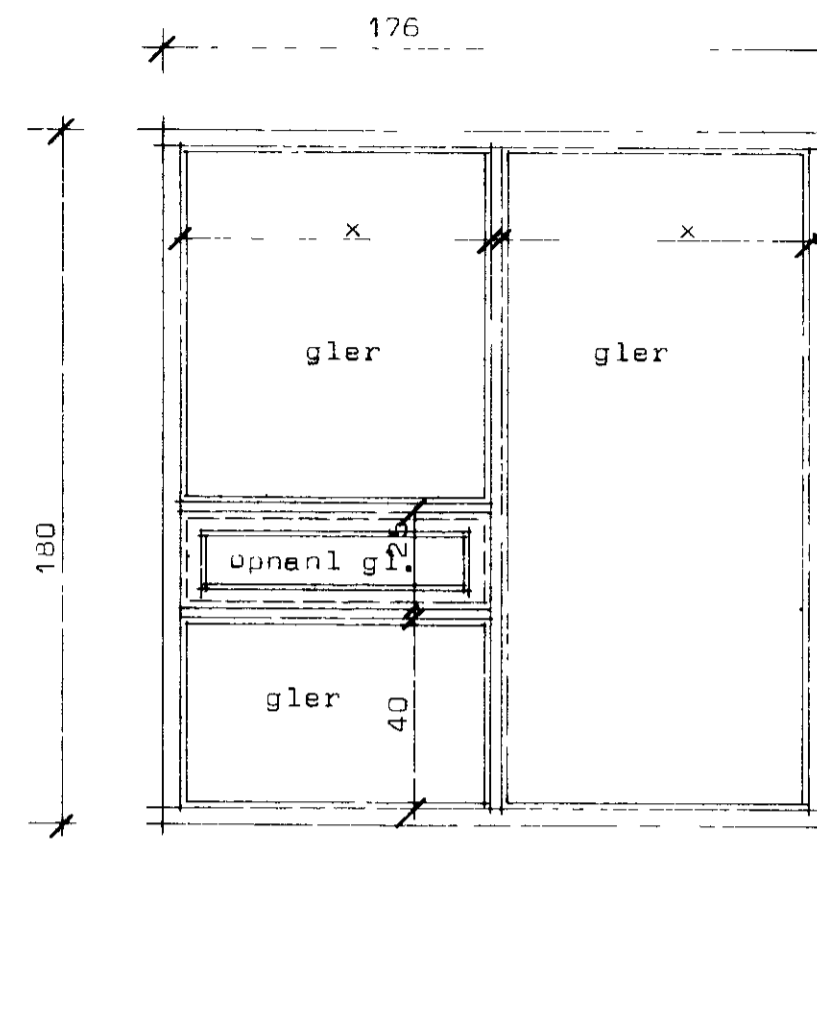


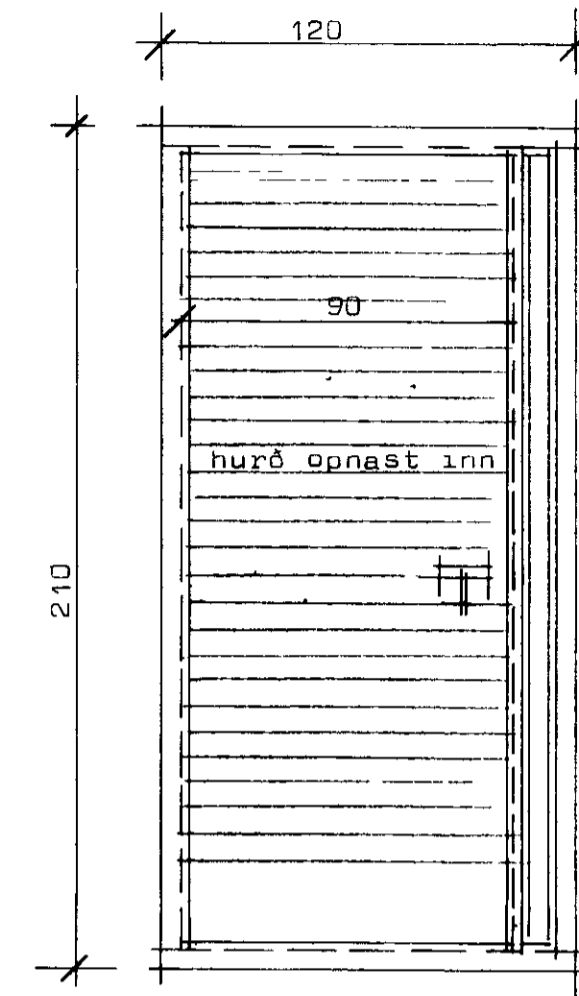
1 stk aðalhurð



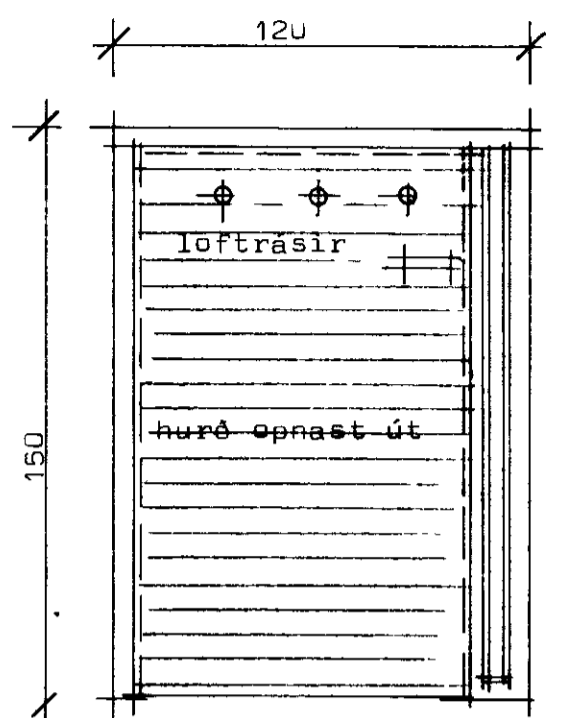
1 stk í störu



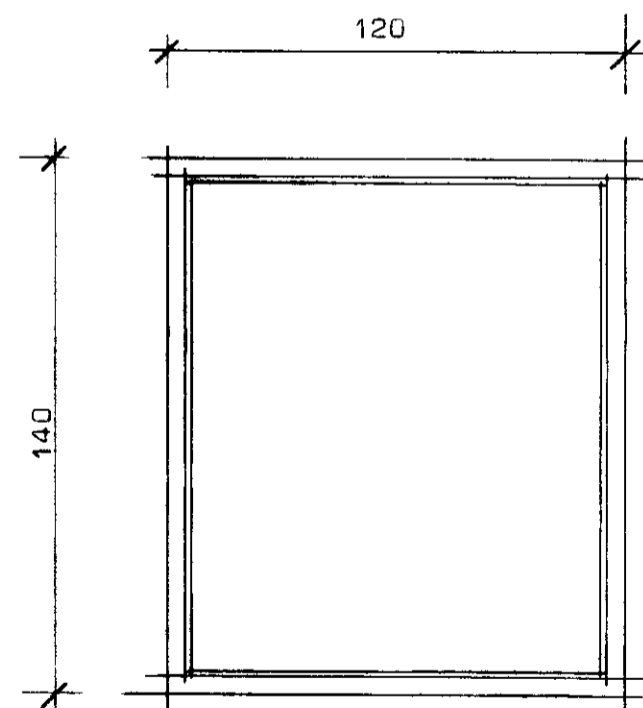
2 stk í stofu.



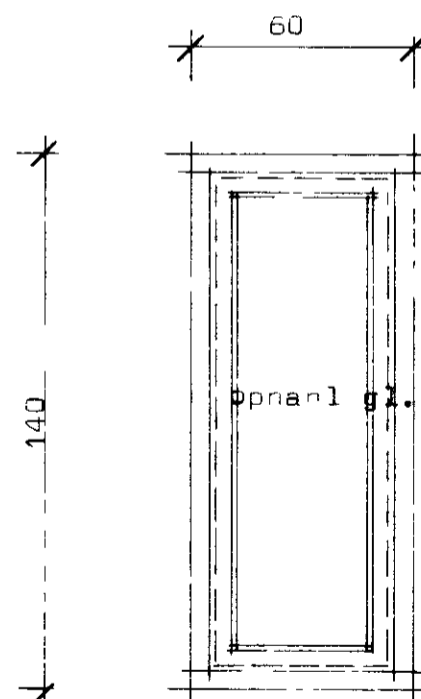
1 stk í bílg



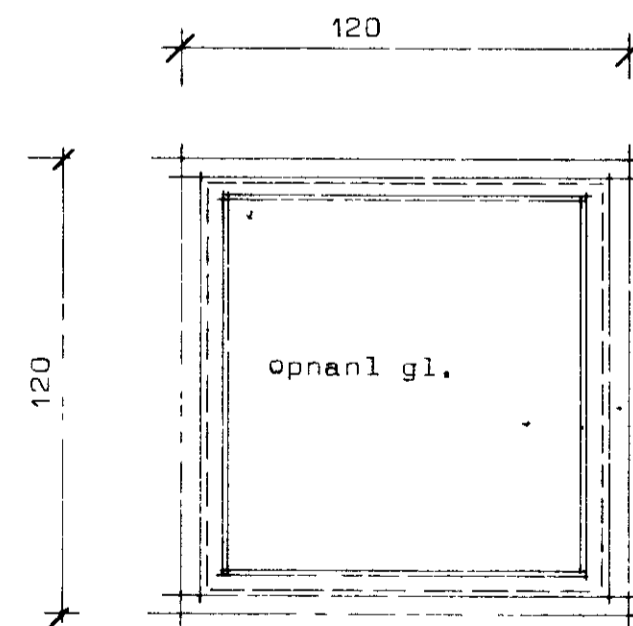
1 stk í sorpg.



5 stk í herb, eldhús og bílg.



6 stk á bað



2 stk í eldhús og torðkr.

Attt. Mál af hurðum sem settar eru í á eftir takist a staðnum.  
 Í gluggum sé valin fura eða Oregonpine.  
 Gluggar séu fúavarðir tré verkstæði.  
 Opnanlegir gluggar eru topphengdir.  
 x merkir jafn bil innb róis í glugga.  
 Í aðalhurð sé harðviður t.d. teak.

**STADALHÚS** S F  
 TEIKNISTOFA SUDURLANDSBRAUT 20 SIMI 83141

VERKEFNI	DAGS.	1977	VERK NR
Hurðir og gluggar	MKV.	1.50	S 26
	BR.		
	BLAD NR		

*Þorsteinn Þorsteinsson* *Sigurður P. Kristjánsson*