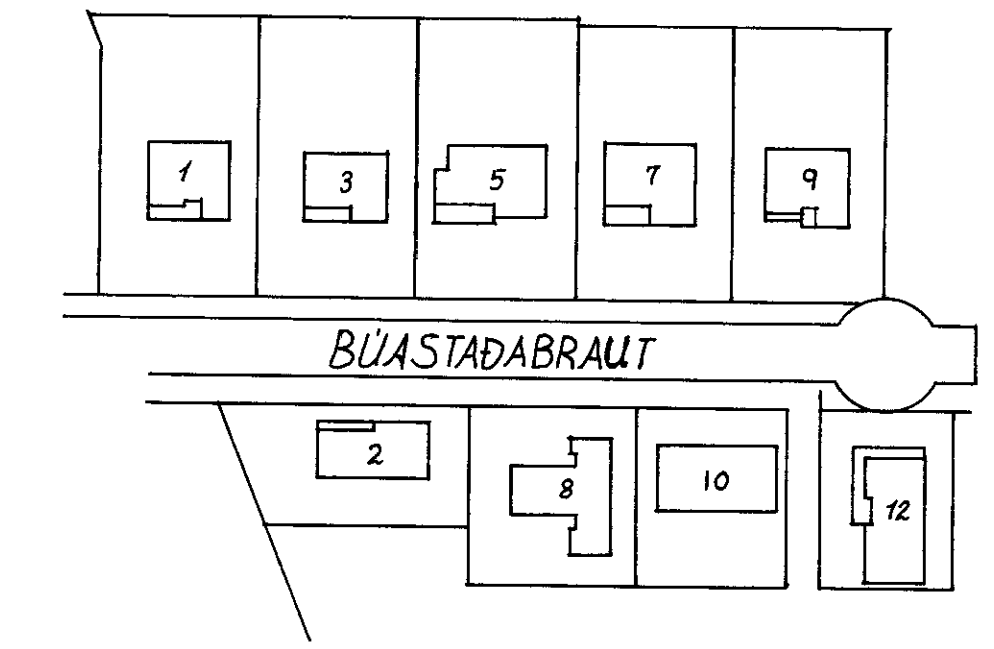
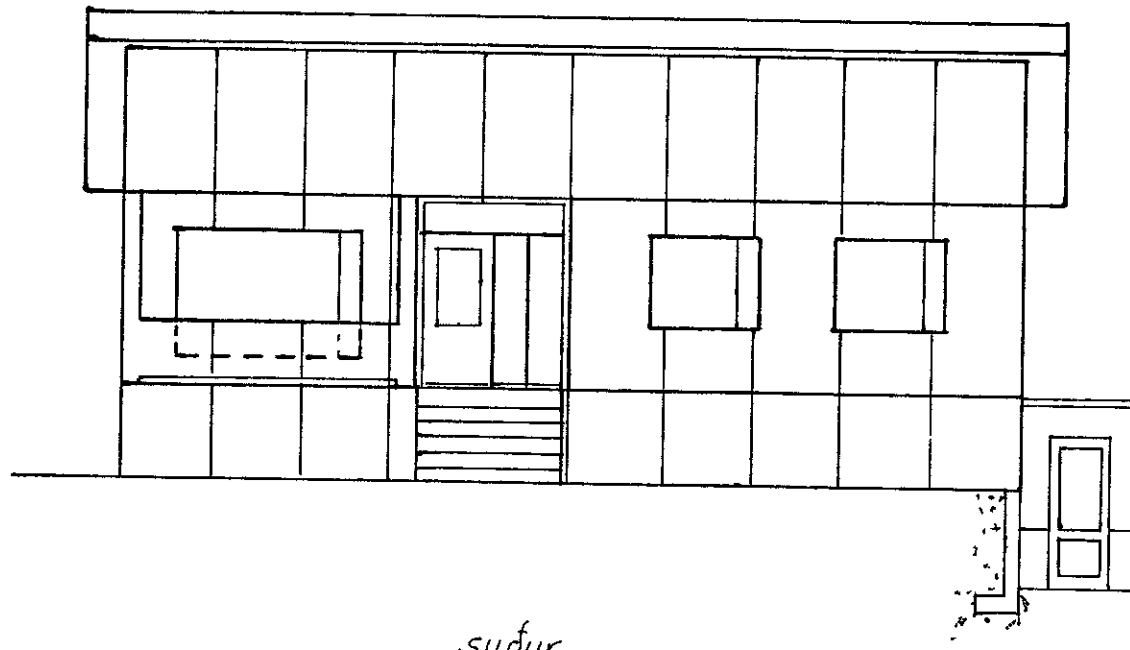


Fluss B

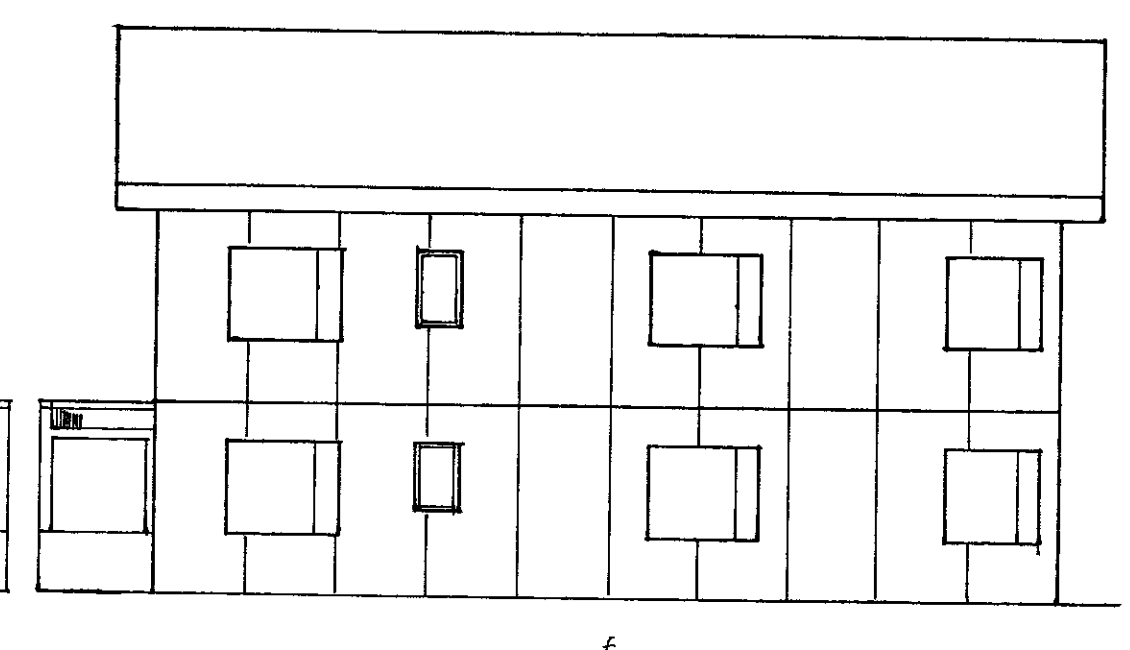
arkiv ar-nuna
1996/0002



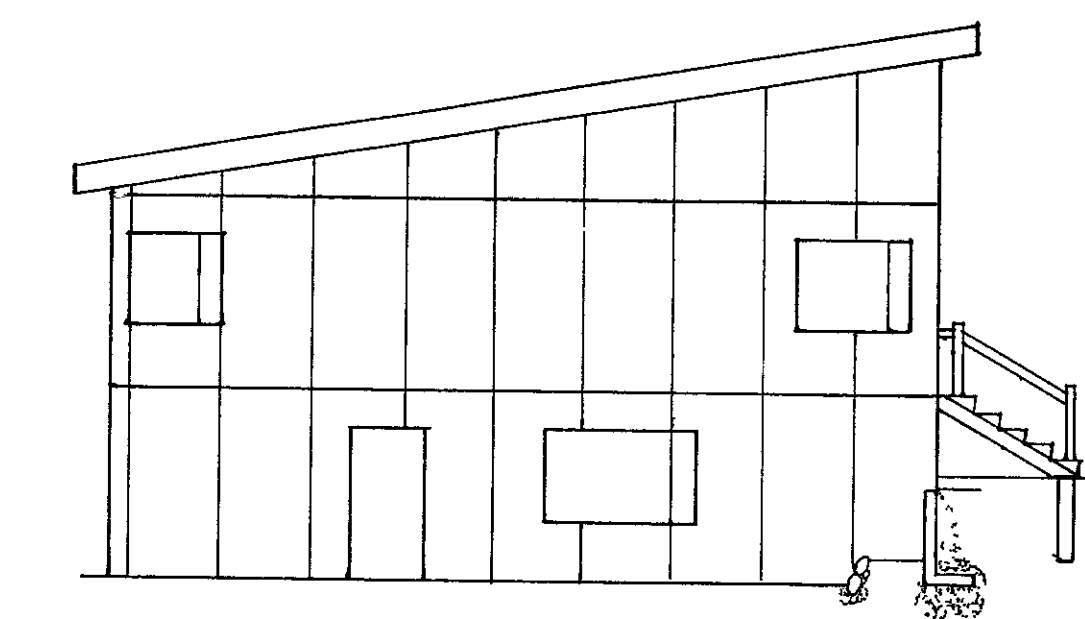
BÚASTADABRAUT



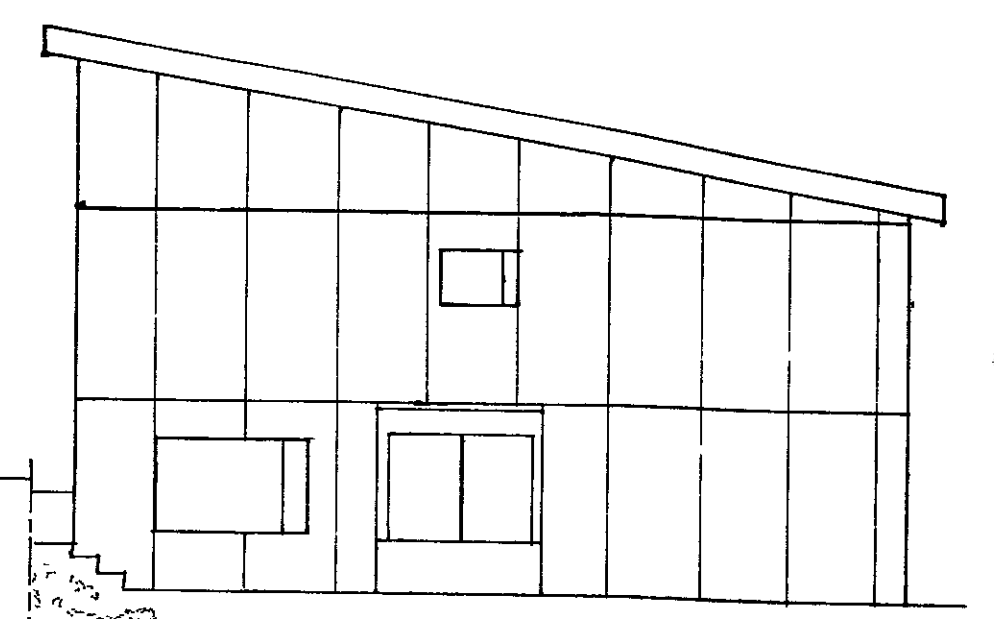
sudur



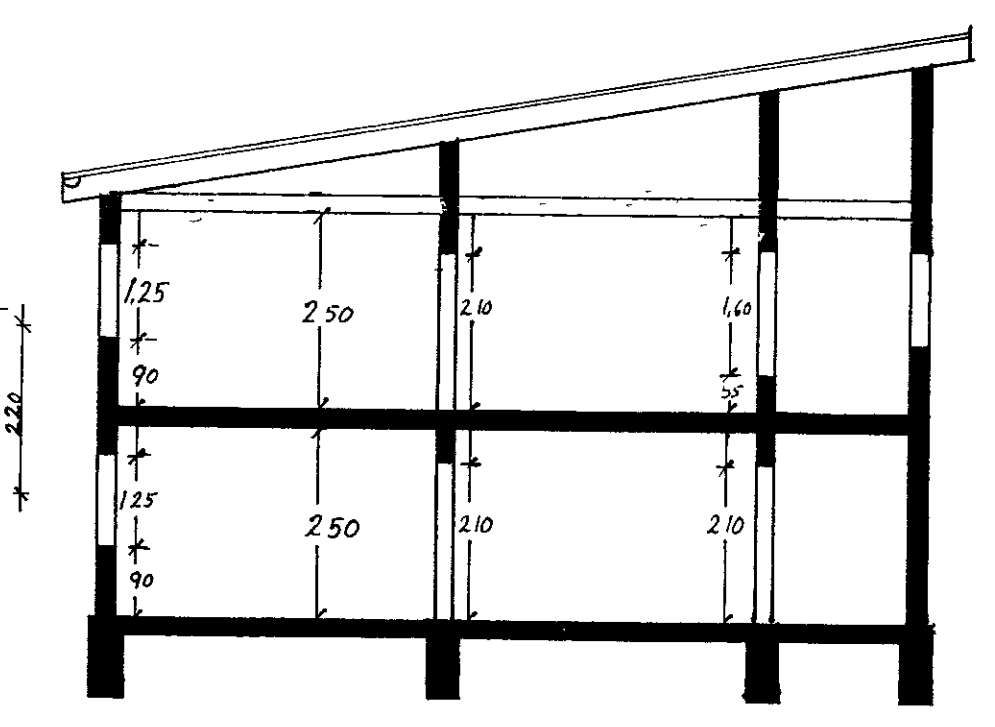
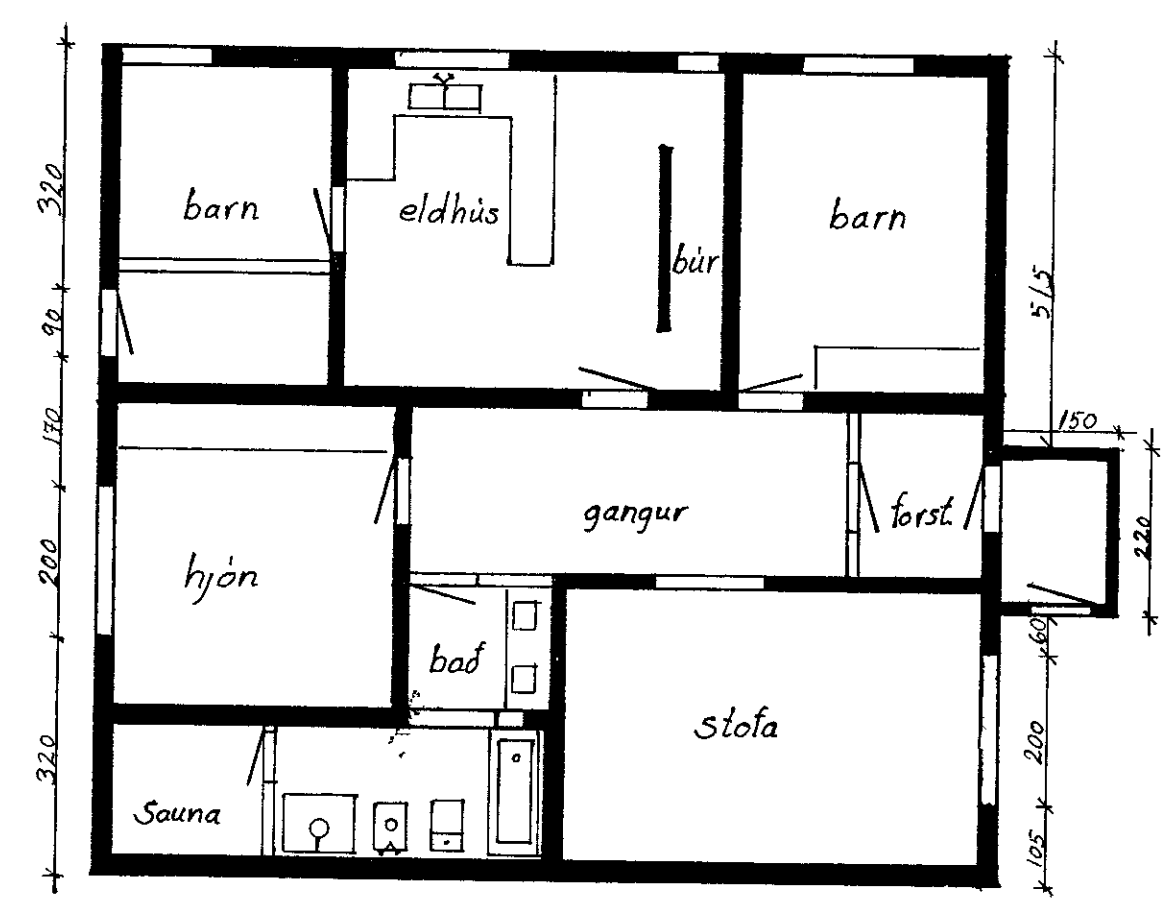
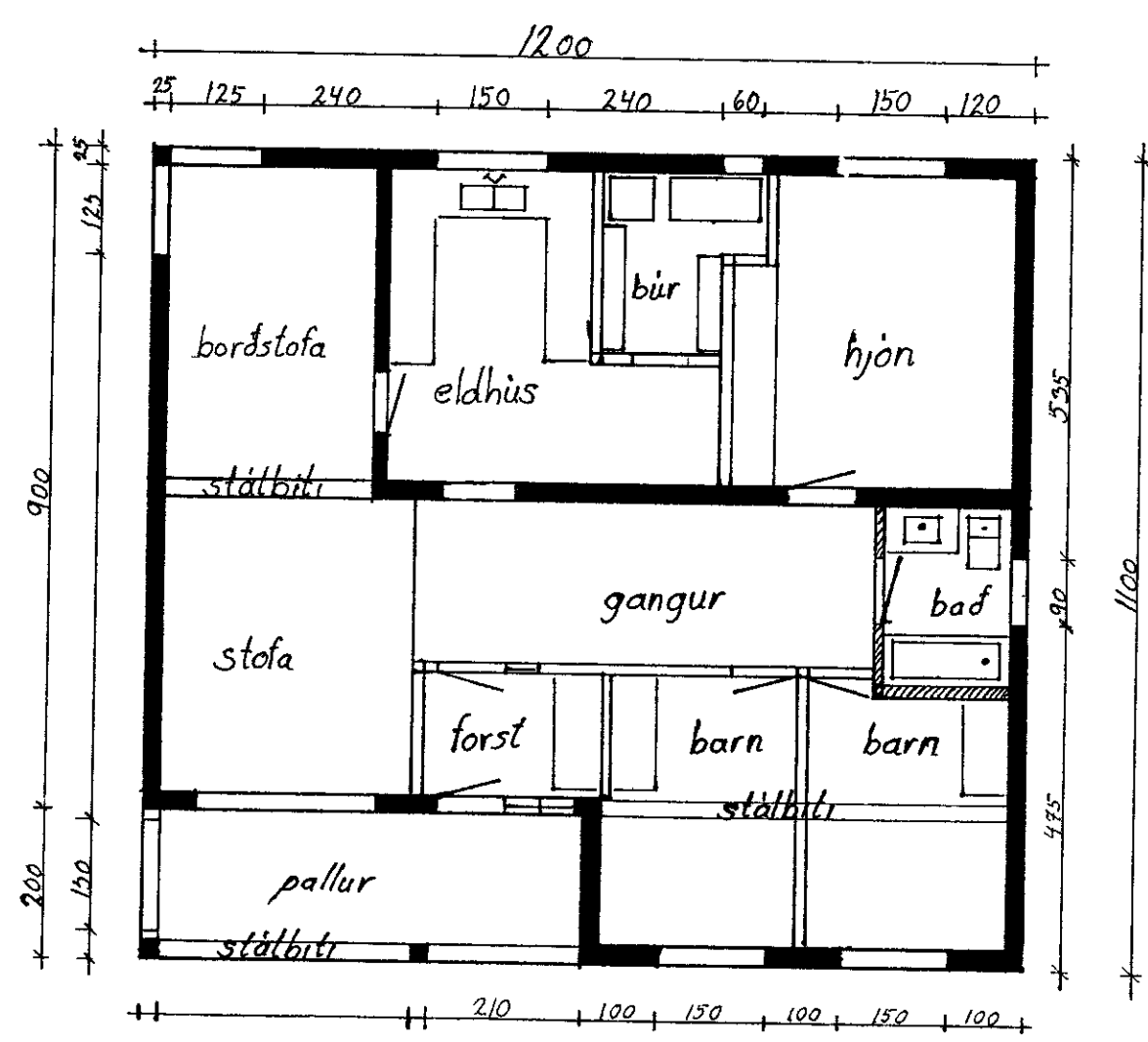
nordur



vestur



austur



Húsið er klætt að utan með ljósum
steni-pötum og einangrað með
2" steinull i grind
Ytri forstofan er á steyptum sökklí
og steypt upp undir glugga, yfir-
bygging er úr timbri, gleri, steni og
bárujárni

Búastadabraut 7 Vestmannaeyjum
utanhússklöðning, ytri forstofa
Kvarði Teiknad